

TUCSON, ARIZONA

HI-ILS or LOC Z RWY 31

LOC I-DMA 109.3	APCH CRS 308°	Rwy ldg 13,645 TDZE 2704 Arprt Elev 2704
---------------------------	-------------------------	---

[USAF]

DAVIS-MONTHAN AFB (KDMA)

DME or RADAR required.

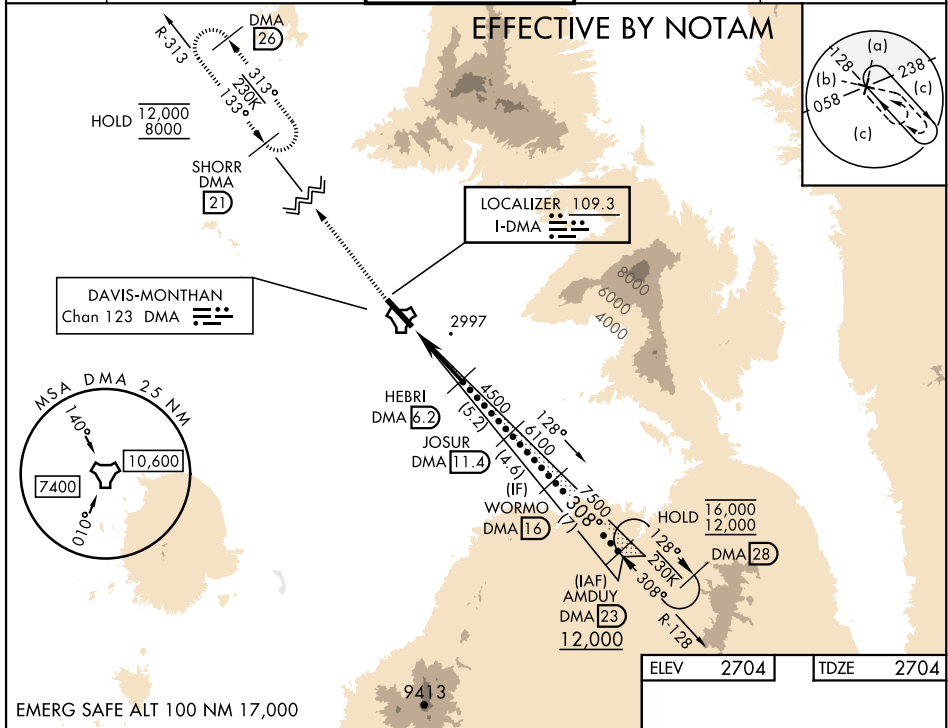
ALSF-1

MISSED APPROACH: Climb to 8000, intercept DMA TACAN R-313 to SHORR and hold, continue climb-in-hold to 8000.

- * When ALS inop, increase RVR to 40, vis to 3/4 mile.
- ** When ALS inop, increase vis to 2 miles.
- *** Circling not authorized SW of Rwy 13-31.



ATIS ★ 270.1	TUCSON APP CON 066°-274° 119.4 318.1 275°-065° 125.1 269.55	TOWER 118.85 253.5	GND CON 121.8 275.8	CLNC DEL 121.8 275.8
------------------------	---	------------------------------	-------------------------------	--------------------------------

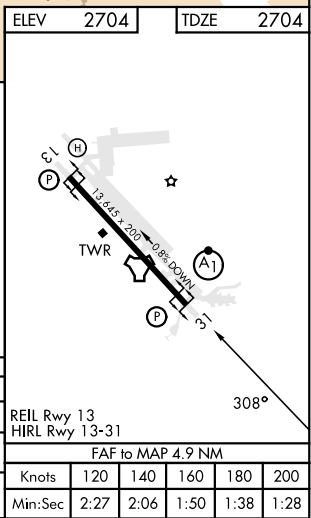


SW-4, 03 OCT 2024 to 31 OCT 2024

SW-4, 03 OCT 2024 to 31 OCT 2024

8000 ↑ DMA R-313	SHORR DMA 21	HEBRI DMA 6.2	JOSUR DMA 11.4	WORMO DMA 16	AMDUY DMA 23
4500	6100	7500	12,000		
0.5 NM	4.9 NM				

CATEGORY	C	D	E
S-ILS 31 *	2904/24	200	(200-1/2)
S-LOC 31 **	3400-1 1/2	696	(700-1 1/2)
CIRCLING ***	3400-2 696 (700-2)	3420-2 1/4 716 (800-2 1/4)	3460-2 3/4 756 (800-2 3/4)



TUCSON, ARIZONA
Orig 05SEP24

32°10'N-110°53'W

DAVIS-MONTHAN AFB (KDMA)

HI-ILS or LOC Z RWY 31