

TUCSON, ARIZONA

ILS or LOC Y RWY 12

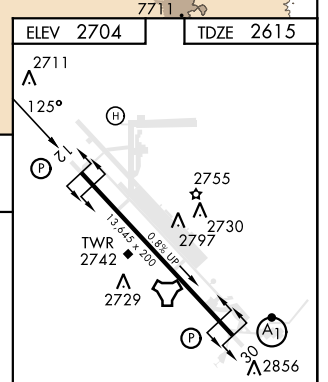
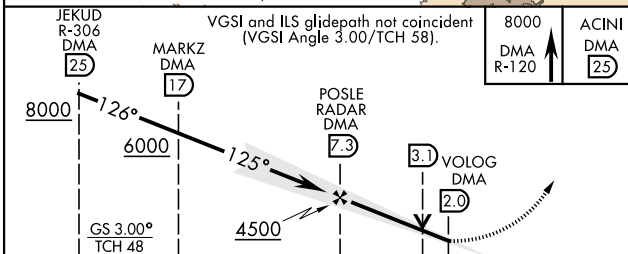
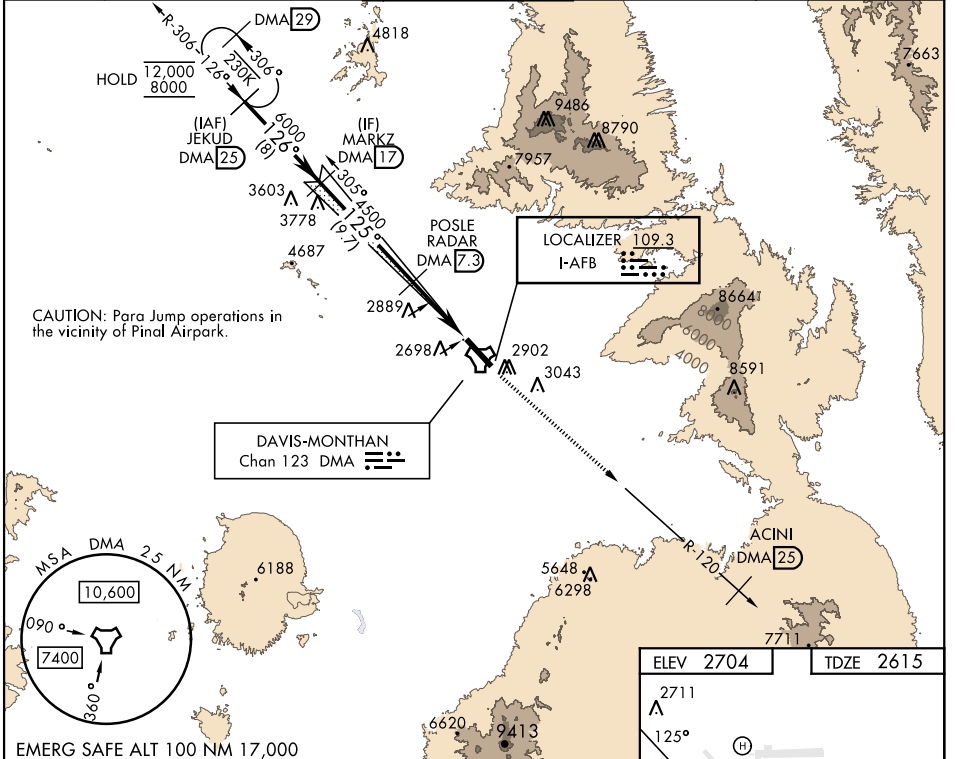
LOC I- AFB 109.3	APCH CRS 125°	Rwy Ldg 13,645 TDZE 2615 Arpt Elev 2704
-----------------------------------	-------------------------	---

AL-429 [USAF]

DAVIS-MONTHAN AFB (KDMA)

DME or RADAR required.		MISSED APPROACH: Climbing to 8000 intercept DMA TACAN R-120 to ACINI. Expect RADAR vectors.		
* Circling not authorized S of Rwy 12-30.				

ATIS★ 270.1	TUCSON APP CON 066°-274° 119.4 318.1 275°-065° 125.1 269.55	TOWER 118.85 253.5	GND CON 121.8 275.8	CLNC DEL 121.8 275.8
-----------------------	---	------------------------------	-------------------------------	--------------------------------



CATEGORY	A	B	C	D	E	REIL Rwy 12 HIRL Rwy 12-30
S-ILS 12	281.5/40 200 (200-¾)					
S-LOC 12	3160/55 545 (500-1)	3160-1½ 545 (500-1½)				FAF to MAP 5.3 NM
*CIRCLING	3200-1 496 (500-1)	3280-1½ 576 (600-1½)	3420-2¼ 716 (800-2¼)	3460-2¾ 756 (800-2¾)		Knots 60 90 120 150 180
						Min:Sec 5:18 3:32 2:39 2:07 1:46

TUCSON, ARIZONA
Amdt 2 10AUG23

32°10'N-110°53'W

DAVIS-MONTHAN AFB (KDMA)

ILS or LOC Y RWY 12

SW-4, 03 OCT 2024 to 31 OCT 2024

SW-4, 03 OCT 2024 to 31 OCT 2024