

TACAN Y RWY 12

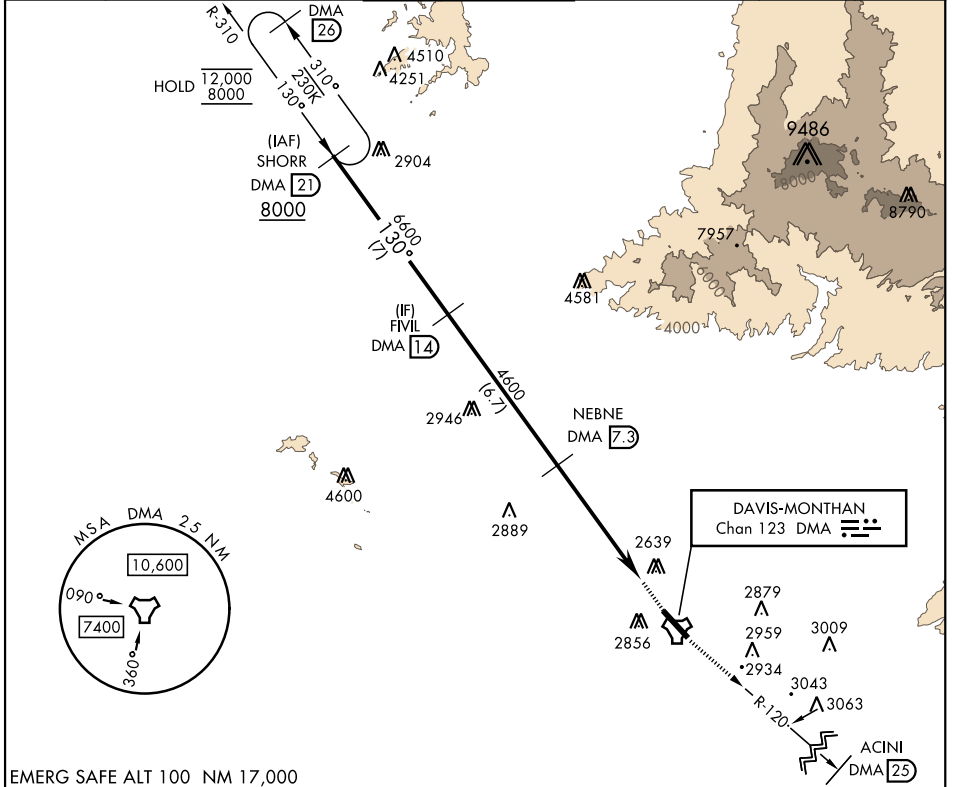
TACAN DMA Chan 123	APCH CRS 130°	Rwy Idg 13,645 TDZE 2615 Arprt Elev 2704
------------------------------	-------------------------	---

AL-429 [USAF]

DAVIS-MONTHAN AFB (KDMA)

RADAR required	MISSED APPROACH: Climbing to 8000 intercept DMA TACAN R-120 to ACINI. Expect RADAR vectors.
----------------	---

ATIS ★ 270.1	TUCSON APP CON 090°-285° 125.1 269.55 286°-089° 119.4 318.1	TOWER 118.85 253.5	GND CON 121.8 275.8	CLNC DEL 121.8 275.8
------------------------	---	------------------------------	-------------------------------	--------------------------------



EMERG SAFE ALT 100 NM 17,000

SHORR DMA 21 8000	FIVIL DMA 14 6600	NEBNE DMA 7.3 4600	ESALE DMA 2.1 3.17° TCH 58	ACINI DMA 25 ELEV 2704 TDZE 2615
8000		4600		2711
130°		3.17°		130°
5.2 NM		0.6 NM		2755
CATEGORY		CATEGORY		TWR 2742
A	B	C	D	E
S-12	3160/55 545 (500-1)	3160-1½	545 (500-1½)	
CIRCLING*	3200-1 496 (500-1)	3280-1½ 576 (600-1½)	3420-2¼ 716 (800-2¼)	3460-2¾ 756 (800-2¾)
TUCSON, ARIZONA Amdt 9 10AUG23				DAVIS-MONTHAN AFB (KDMA) HIRL Rwy 12-30 REIL Rwy 12

TUCSON, ARIZONA
Amdt 9 10AUG23

32°10'N-110°53'W

DAVIS-MONTHAN AFB (KDMA)

TACAN Y RWY 12

SW-4, 03 OCT 2024 to 31 OCT 2024

SW-4, 03 OCT 2024 to 31 OCT 2024