

VORTAC ACT <b>115.3</b> Chan <b>100</b>	APP CRS <b>141°</b>	Rwy Idg <b>5103</b> TDZE <b>513</b> Apt Elev <b>516</b>
---	------------------------	---

# VOR RWY 14

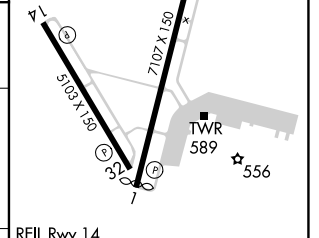
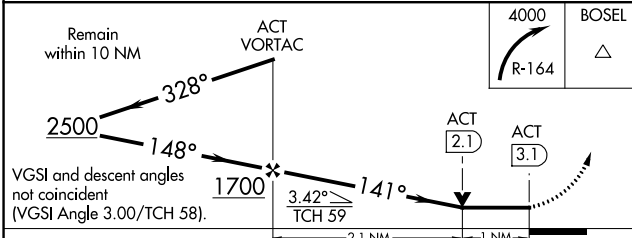
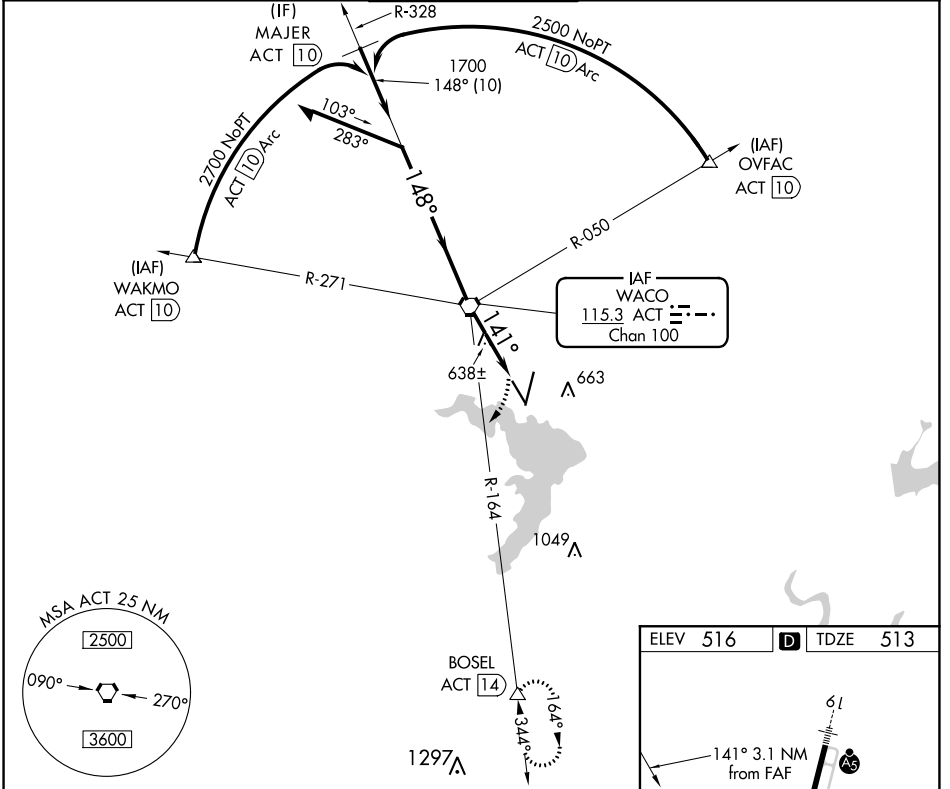
WACO RGNL (ACT)

DME required.

ASR Rwy 14 helicopter visibility reduction below  $\frac{3}{4}$  SM NA. VDP NA with Mc Gregor Exec altimeter setting. When local altimeter setting not received, use Mc Gregor Exec altimeter setting and increase all MDAs 40 feet; and increase S-14 Cat C/D visibility  $\frac{1}{2}$  SM and Circling Cat D visibility  $\frac{1}{4}$  SM.

MISSED APPROACH: Climbing right turn to 4000 on ACT VORTAC R-164 to BOSEL/ACT 14.00 DME and hold, Continue climb-in-hold to 4000.

ATIS <b>123.85</b>	WACO APP CON * <b>127.65 227.125</b>	WACO TOWER * <b>119.3(CTAF) 257.8</b>	GND CON <b>121.9</b>	UNICOM <b>122.95</b>
-----------------------	---	--	-------------------------	-------------------------



CATEGORY	A	B	C	D
S-14	900-1	387 (400-1)	900-1½	387 (400-1½)
CIRCLING	940-1 424 (500-1)	980-1 464 (500-1)	1020-1½ 504 (600-1½)	1160-2 644 (700-2)

	Knots	60	90	120	150	180
Min:Sec		3:06	2:04	1:33	1:14	1:02

SC-3, 03 OCT 2024 to 31 OCT 2024

SC-3, 03 OCT 2024 to 31 OCT 2024