

APP CRS	Rwy Idg	NA
279°	TDZE	NA
	Apt Elev	14

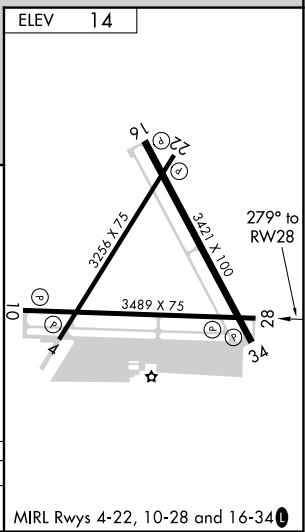
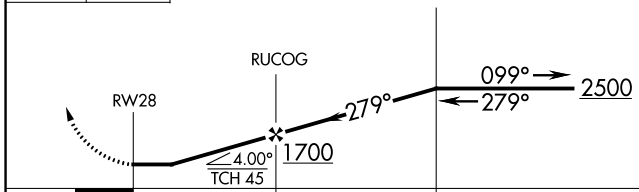
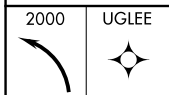
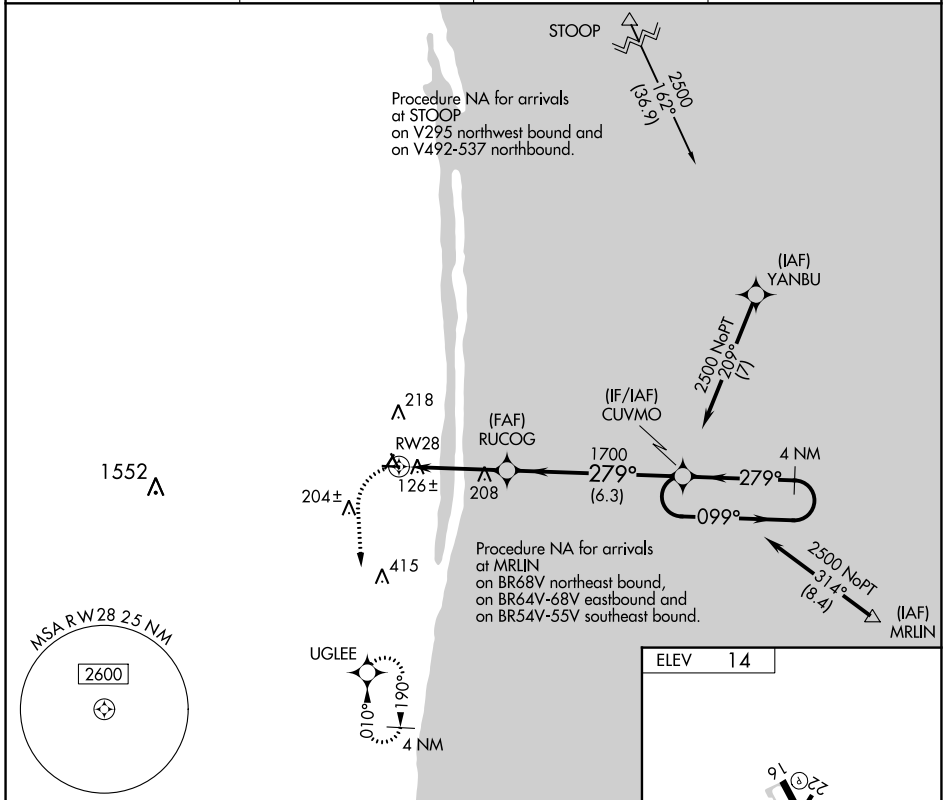
# RNAV (GPS)-B

PALM BEACH COUNTY PARK (L.N.A)

**▼** DME/DME RNP-0.3 NA. Rwy 28 helicopter visibility reduction below 1 SM NA. Circling to Rwys 4, 16, 22, 28, 34 NA at night.

MISSED APPROACH: (Do not exceed 210K until turn completion) Climbing left turn to 2000 direct UGLEE and hold.

AWOS-3PT <b>119.925</b>	PALM BEACH APP CON <b>127.35 343.6</b>	CLNC DEL <b>127.35</b>	UNICOM <b>122.7 (CTAF) 0</b>
----------------------------	---	---------------------------	---------------------------------



CATEGORY	A	B	C	D
<b>C</b> CIRCLING	460-1 446 (500-1)	520-1 506 (600-1)	580-1½ 566 (600-1½)	NA

SE-3, 03 OCT 2024 to 31 OCT 2024

SE-3, 03 OCT 2024 to 31 OCT 2024