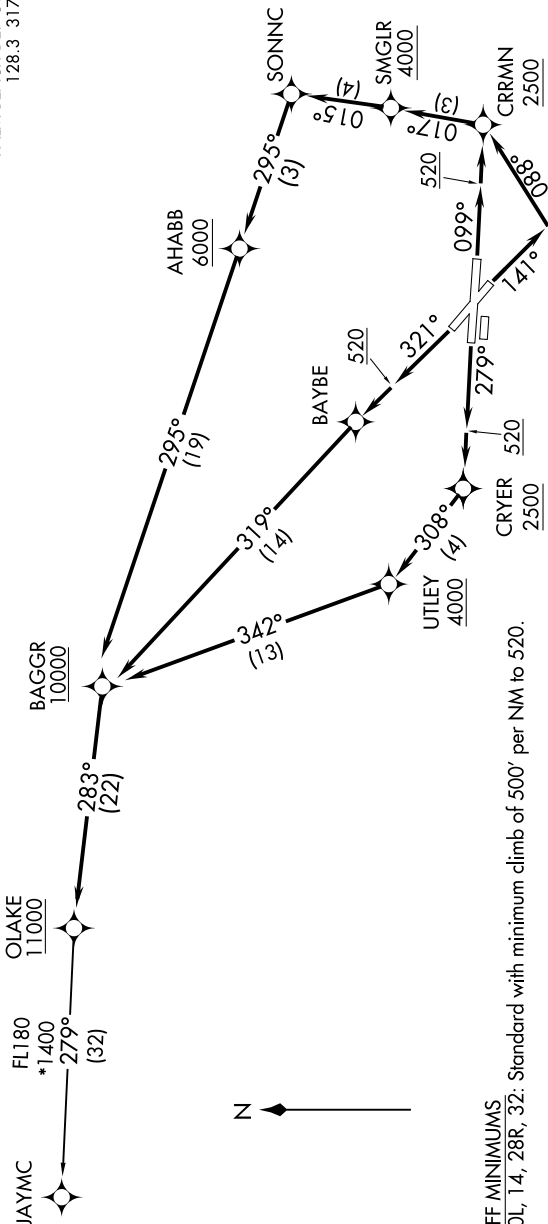


OLAKE TWO DEPARTURE (RNAV)

D-ATIS 123.75
 CLNC DEL 121.6 284.6
 CPDIC
 GND CON 121.9 284.6
 PALM BEACH TOWER 119.1 257.8
 PALM BEACH DEP CON 128.3 317.4

RNAV 1 - DME/DME/IRU or GPS.
 RADAR required for non-GPS equipped aircraft.

TOP ALTITUDE:
 11000



TAKEOFF MINIMUMS
 Rwy 10L, 14, 28R, 32: Standard with minimum climb of 500' per NM to 520.

NOTE: Turbo-jets only.

(NARRATIVE ON FOLLOWING PAGE)

NOTE: Chart not to scale.