

# HI-TACAN RWY 15R

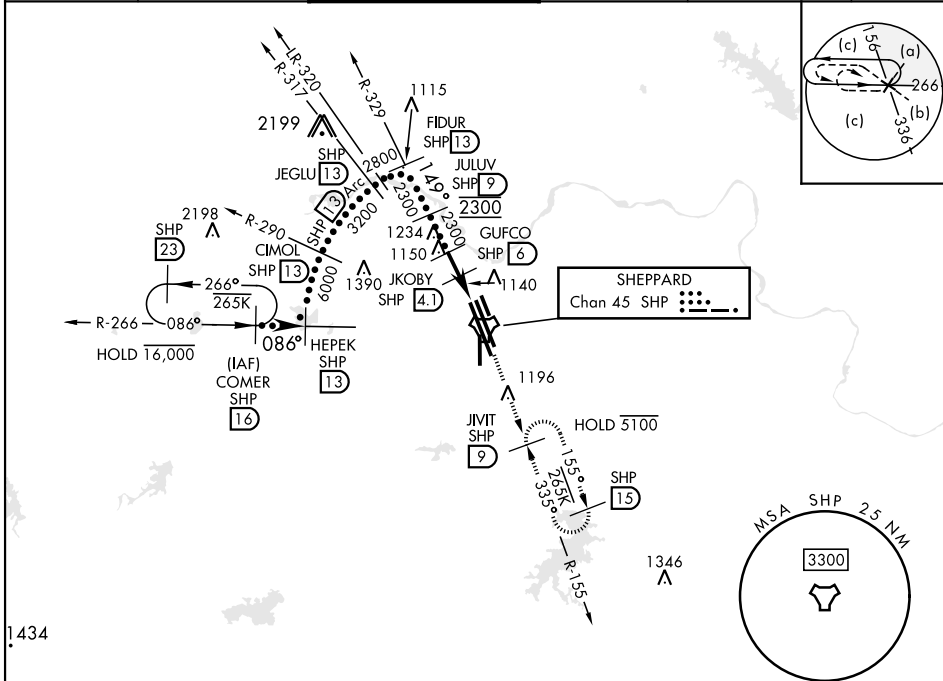
TACAN SHP Chan 45	APCH CRS 149°	Rwy ldg 13.101 TDZE 998 Arprt Elev 1019
----------------------	------------------	---

[USAF]

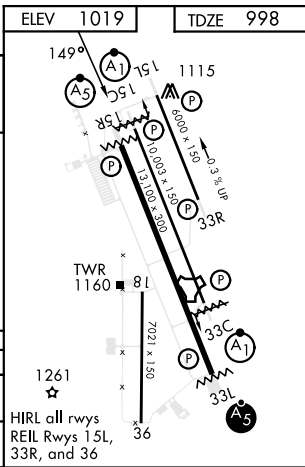
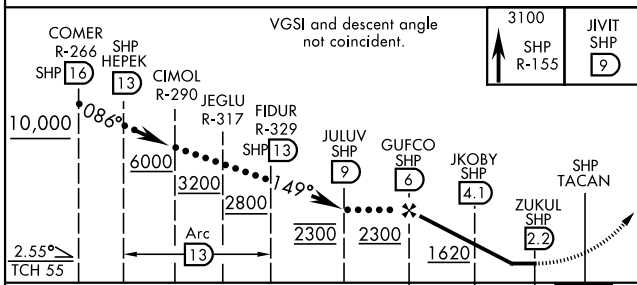
SHEPPARD AFB/WICHITA FALLS MUNI (KSPS)

▼ * When ALS inop, increase CAT CDE vis to 1¼ miles. ** Circling not authorized W of Rwy 15R-33L.	MALS R A5	MISSED APPROACH: Climb and maintain 3100, intercept SHP TACAN R-155 to SHP R-155/9 DME (JIVIT) and hold.

ATIS ★ 132.05 269.9	APP CON 118.2 269.025	TOWER ★ 119.75 0 279.525 (CTAF)	GND CON 125.5 289.4	CLNC DEL 121.2 282.225	ASR
------------------------	--------------------------	------------------------------------	------------------------	---------------------------	-----



CAUTION:  
Do not confuse parallel taxiway with Rwy 15R-33L.  
EMERG SAFE ALT 100 NM 4600



CATEGORY	C		D		E
S-15R*	1420-¾		422	(500-¾)	
CIRCLING**	1480-1½ 461 (500-1½)	2020-3 1001 (1100-3)	2080-3 1061 (1100-3)		

# HI-TACAN RWY 15R

SC-2, 03 OCT 2024 to 31 OCT 2024

SC-2, 03 OCT 2024 to 31 OCT 2024