

WICHITA FALLS, TEXAS

# ILS or LOC/DME RWY 15C

LOC I-SHP <b>110.5</b>	APCH CRS <b>153°</b>	Rwy Ldg 15C <b>10,003</b> 15R <b>13,100</b> TDZE 15C <b>1003</b> 15R <b>998</b> Arprt Elev <b>1019</b>
---------------------------	-------------------------	--

[USAF]

SHEPPARD AFB/  
WICHITA FALLS MUNI (KSPS)

DME required.

- ▼ \* When ALS inop, increase all CATs vis to 3/4 mile.
- \*\* When ALS inop, increase CAT AB vis to 1 mile, CAT CDE vis to 1 1/2 miles.



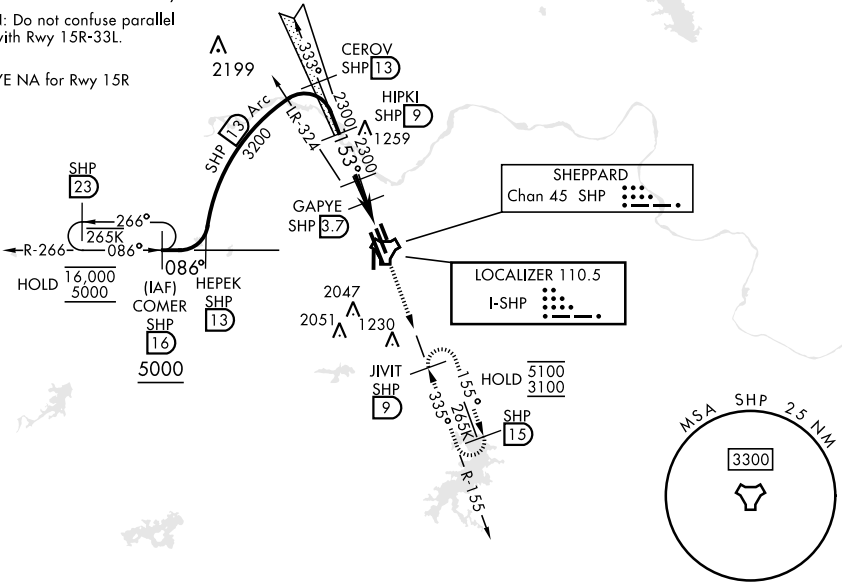
MISSED APPROACH: Climb and maintain 3100, intercept SHP TACAN R-155 to SHP R-155/9 DME (JIVIT) and hold.

ATIS ★ <b>132.05 269.9</b>	APP CON <b>118.2 269.025</b>	TOWER ★ <b>119.75 279.525</b> (CTAF)	GND CON <b>125.5 289.4</b>	CLNC DEL <b>121.2 282.225</b>	ASR
-------------------------------	---------------------------------	---	-------------------------------	----------------------------------	-----

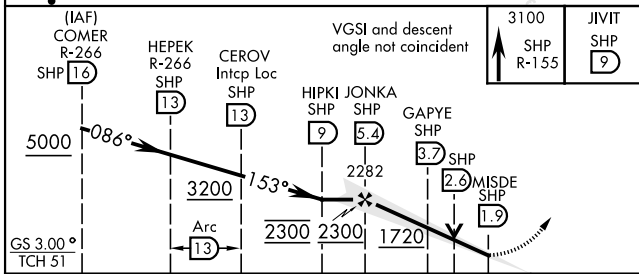
- \*\*\* When ALS inop, increase CAT AB vis to 1 mile, CAT CDE vis to 1 1/2 miles.
- † Circling not authorized W of Rwy 15R-33L.

CAUTION: Do not confuse parallel taxiway with Rwy 15R-33L.

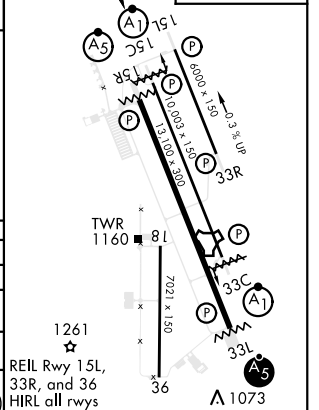
SDF GAPYE NA for Rwy 15R



1407 EMERG SAFE ALT 100 NM 4600



ELEV 1019	TDZE 15C 1003	TDZE 15R 998
-----------	---------------	--------------



CATEGORY	A	B	C	D	E
S-ILS 15C *	1203-1/2		200	(200-1/2)	
S-LOC/ DME 15C **	1420-1/2	417 (500-1/2)	1420-3/4	417	(500-3/4)
SIDESTEP 15R ***	1420-1/2	422 (500-1/2)	1420-3/4	422	(500-3/4)
CIRCLING†	1440-1 421 (500-1)	1480-1 461 (500-1)	1480-1 1/2 461 (500-1 1/2)	2020-3 1001 (1100-3)	2080-3 1061 (1100-3)

WICHITA FALLS, TEXAS 33°59'N-98°30'W

SHEPPARD AFB/WICHITA FALLS MUNI (KSPS)

Amtd 9 08SEP22

# ILS or LOC/DME RWY 15C

SC-2, 03 OCT 2024 to 31 OCT 2024

SC-2, 03 OCT 2024 to 31 OCT 2024