

RNAV (GPS) RWY 15C

APCH CRS 153°	Rwy Idg 10.003 TDZE 1003 Arprt Elev 1019
-------------------------	---

[USAF]

SHEPPARD AFB/WICHITA FALLS MUNI (KSPS)

RNP APCH-GPS

ALSF-1

MISSED APPROACH: Climb to 3100 direct DILGR and hold.

▼ * When ALS inop, increase vis to ¾ mile.
** When ALS inop, increase CAT AB vis to 1 mile, CAT CDE vis to 1½ miles.

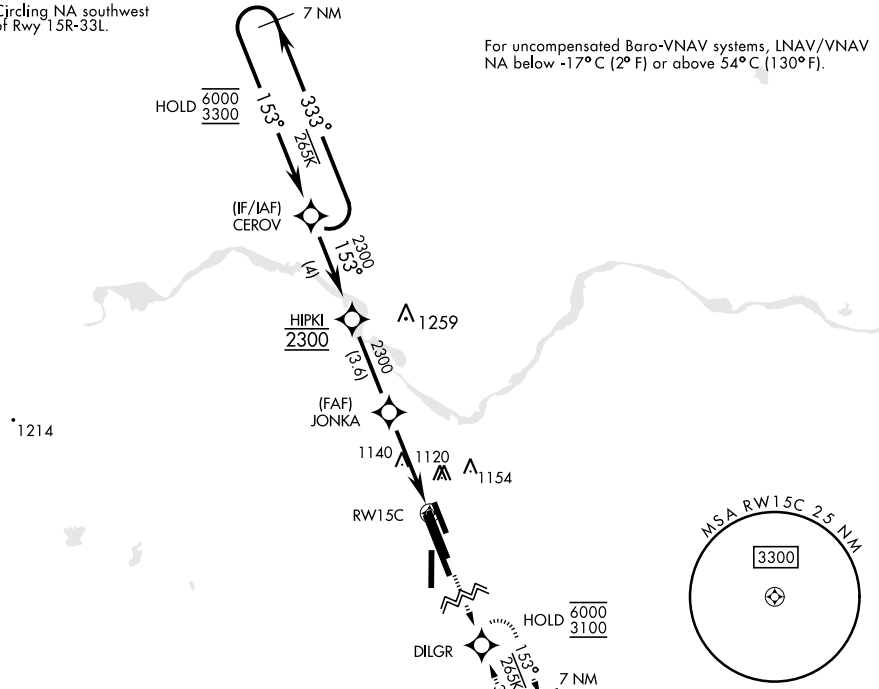
ATIS ★ 132.05 269.9	APP CON 118.2 269.025	TOWER ★ 119.75 0 279.525 (CTAF)	GND CON 125.5 289.4	CLNC DEL 121.2 282.225	ASR
-------------------------------	---------------------------------	---	-------------------------------	----------------------------------	-----

*** Circling NA southwest of Rwy 15R-33L.

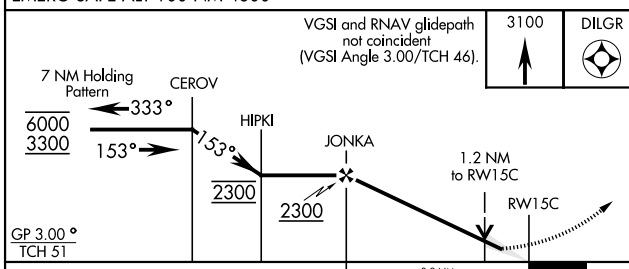
For uncompensated Baro-VNAV systems, LNAV/VNAV NA below -17°C (2° F) or above 54°C (130° F).

SC-2, 03 OCT 2024 to 31 OCT 2024

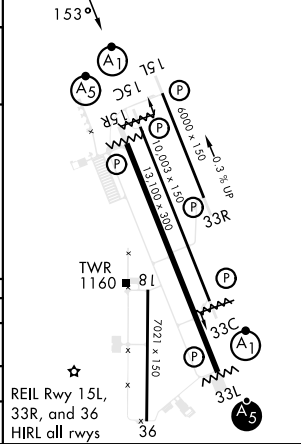
SC-2, 03 OCT 2024 to 31 OCT 2024



EMERG SAFE ALT 100 NM 4600



ELEV	1019	TDZE	1003
------	------	------	------



CATEGORY	A	B	C	D	E
LNAV/VNAV DA*	1266-½ 263 (300-½)	1277-½ 274 (300-½)	1285-½ 282 (300-½)	1296-½ 293 (300-½)	293 (300-½)
LNAV MDA**	1420-½ 401 (500-1)	417 (500-½)	1480-1 461 (500-1)	1420-¾ 417 (500-¾)	2020-3 1001 (1100-3)
CIRCLING***	1420-1 401 (500-1)	1480-1 461 (500-1)	1480-1½ 461 (500-1½)	2020-3 1001 (1100-3)	2080-3 1061 (1100-3)

RNAV (GPS) RWY 15C