

WAAS CH 86599 W06A	APP CRS 058°	Rwy Idg TDZE Apt Elev	8016 28 32
--	------------------------	-----------------------------	---------------------------------------

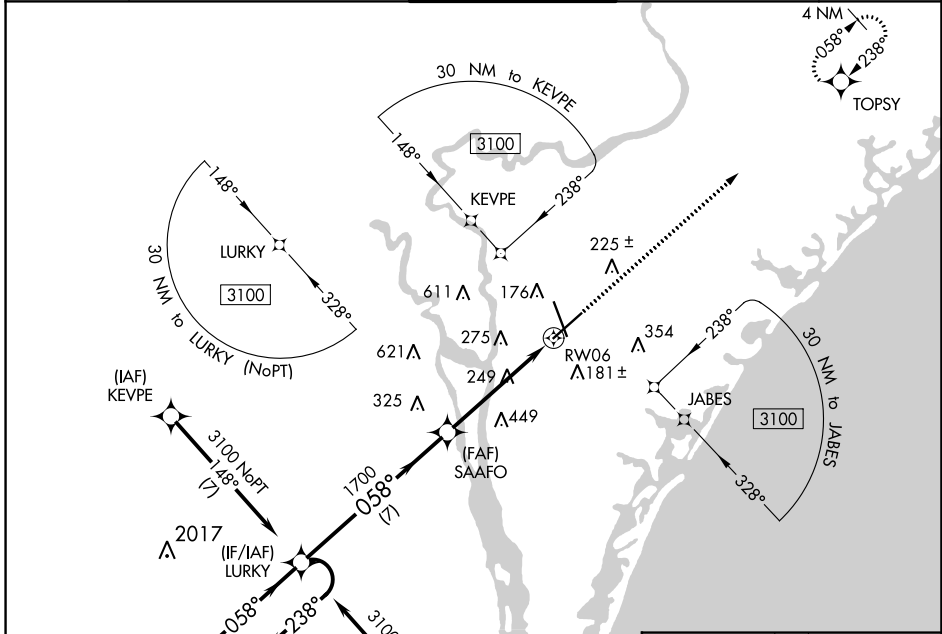
RNAV (GPS) RWY 6

WILMINGTON INTL (ILM)

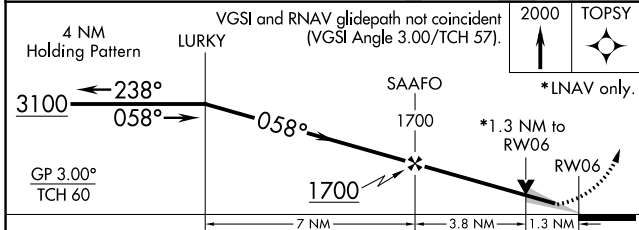
⚠ For uncompensated Baro-VNAV systems, LNAV/VNAV NA below -7°C (20°F) or above 54°C (130°F). DME/DME RNP-0.3 NA.

MISSED APPROACH: Climb to 2000 direct TOPSY and hold.

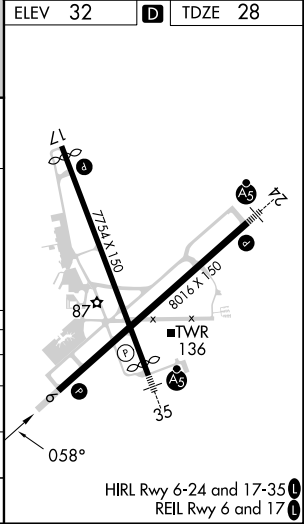
ATIS 124.975	WILMINGTON APP CON * 118.25 284.65 (164°-343°) 135.75 317.425 (344°-163°)	WILMINGTON TOWER * 119.9 (CTAF) 239.3	GND CON 121.9 348.6	UNICOM 122.95
------------------------	---	--	-------------------------------	-------------------------



ELEV 32	TDZE 28
---------	---------



CATEGORY	A	B	C	D
LPV DA	228/40 200 (200-¾)			
LNAV/VNAV DA	434/60 406 (500-1½)			
LNAV MDA	500/55 472 (500-1)	500-1¾ 472 (500-1¾)		
CIRCLING	560-1 528 (600-1)	720-2 688 (700-2)	920-3 888 (900-3)	



SE-2, 03 OCT 2024 to 31 OCT 2024

SE-2, 03 OCT 2024 to 31 OCT 2024