

WAAS CH 90512 W27A	APP CRS 274°	Rwy Idg 7604 TDZE 1068 Apt Elev 1099
----------------------------------------	------------------------	-----------------------------------------------------------------

RNAV (GPS) X RWY 27

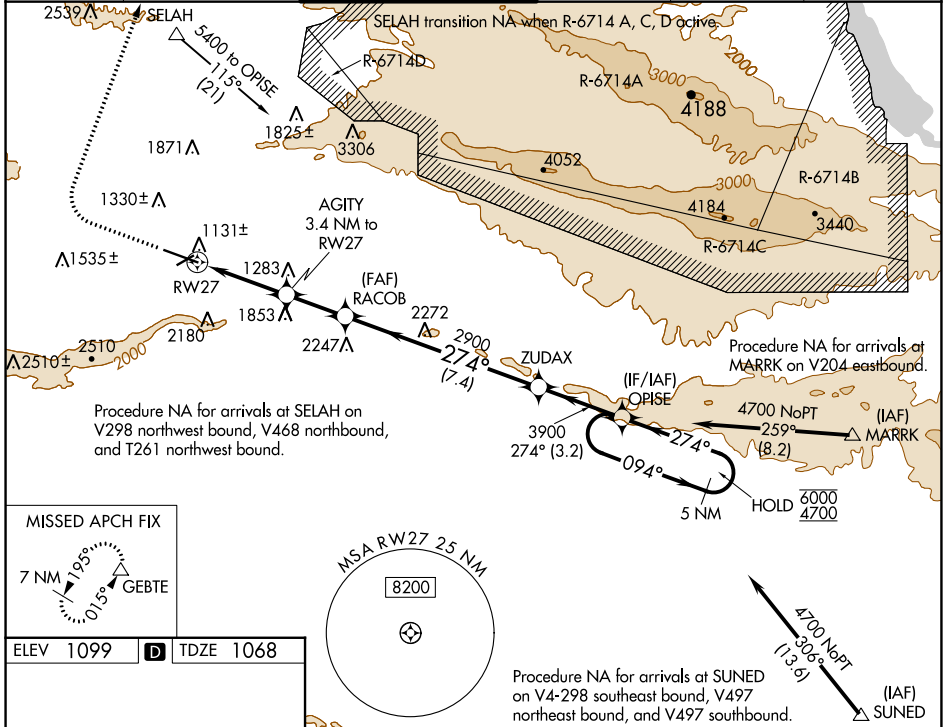
YAKIMA AIR TRML/MCALLISTER FLD (YKM)

RNP APCH.
 ▼ Circling NA south of Rws 9 and 27.
 ▲ For inop ALS, increase LPV all Cats visibility to 1¾ SM.
 *RVR 1800 authorized with use of FD or AP or HUD to DA.

MALSRL
 AS

MISSED APPROACH: Climb to 2100 then climbing right turn to 7000 direct GEBTE and hold. Continue climb-in-hold to 7000. *Missed approach requires minimum climb of 300 feet per NM to 3700. #Missed approach requires minimum climb of 300 feet per NM to 4900.

ATIS 125.25	SPOKANE APP CON* 123.8 263.15	YAKIMA TOWER* 133.25 (CTAF) 257.8	GND CON 121.9	CLNC DEL 121.9	UNICOM 122.95
-----------------------	-----------------------------------------	---------------------------------------------	-------------------------	--------------------------	-------------------------



	2100	7000	GEBTE	5 NM Holding Pattern																																				
	AGITY 3.4 NM to RW27	RACOB 2900	ZUDAX	OPISE	6000																																			
*LNAV only	*0.9 NM to RW27	2180*	2900	3900	4700																																			
	0.9 NM	2.5 NM	2.2 NM	7.4 NM	3.2 NM																																			
<table border="1"> <thead> <tr> <th>CATEGORY</th> <th>A</th> <th>B</th> <th>C</th> <th>D</th> </tr> </thead> <tbody> <tr> <td>LPV DA*</td> <td colspan="4">1268/24 200 (200-½)</td> </tr> <tr> <td>LPV DA</td> <td colspan="4">1668-1¼ 600 (600-1¼)</td> </tr> <tr> <td>LNAV MDA#</td> <td>1400/24</td> <td>332 (400-½)</td> <td>1400/26</td> <td>332 (400-½)</td> </tr> <tr> <td>LNAV MDA</td> <td>1720/24</td> <td>652 (700-½)</td> <td>1720-1¾</td> <td>652 (700-1¾)</td> </tr> <tr> <td><input checked="" type="checkbox"/> CIRCLING</td> <td>1720-1</td> <td>621 (700-1)</td> <td>1880-2¼</td> <td>2280-3</td> </tr> <tr> <td></td> <td></td> <td></td> <td>781 (800-2¼)</td> <td>1181 (1200-3)</td> </tr> </tbody> </table>	CATEGORY	A	B	C	D	LPV DA*	1268/24 200 (200-½)				LPV DA	1668-1¼ 600 (600-1¼)				LNAV MDA#	1400/24	332 (400-½)	1400/26	332 (400-½)	LNAV MDA	1720/24	652 (700-½)	1720-1¾	652 (700-1¾)	<input checked="" type="checkbox"/> CIRCLING	1720-1	621 (700-1)	1880-2¼	2280-3				781 (800-2¼)	1181 (1200-3)	GP 3.00° TCH 57				
CATEGORY	A	B	C	D																																				
LPV DA*	1268/24 200 (200-½)																																							
LPV DA	1668-1¼ 600 (600-1¼)																																							
LNAV MDA#	1400/24	332 (400-½)	1400/26	332 (400-½)																																				
LNAV MDA	1720/24	652 (700-½)	1720-1¾	652 (700-1¾)																																				
<input checked="" type="checkbox"/> CIRCLING	1720-1	621 (700-1)	1880-2¼	2280-3																																				
			781 (800-2¼)	1181 (1200-3)																																				

NW-1, 03 OCT 2024 to 31 OCT 2024

NW-1, 03 OCT 2024 to 31 OCT 2024