

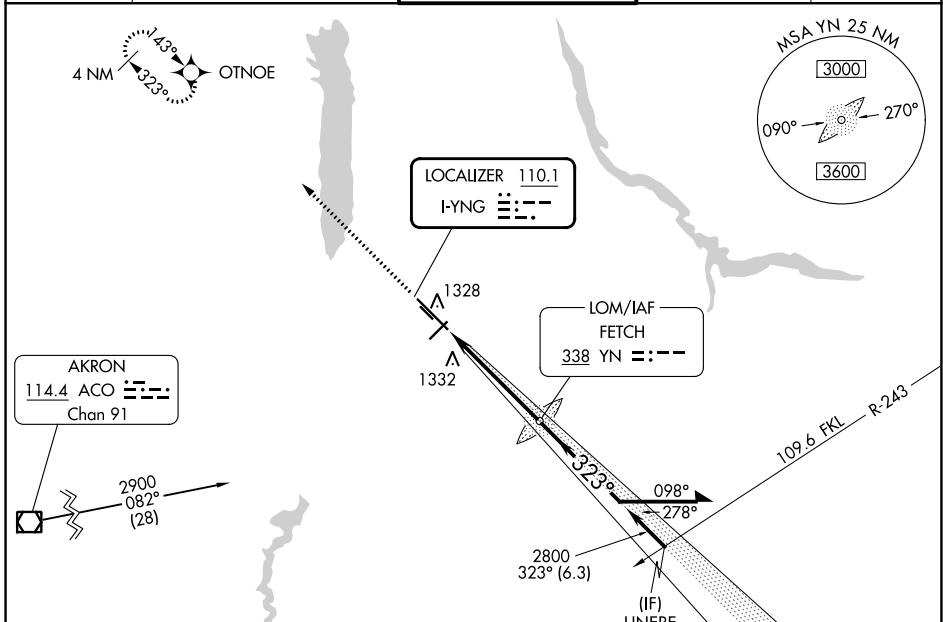
LOC I-YNG 110.1	APP CRS 323°	Rwy Idg TDZE Apt Elev	9003 1186 1192
---------------------------	------------------------	-----------------------------	---

ILS or LOC RWY 32

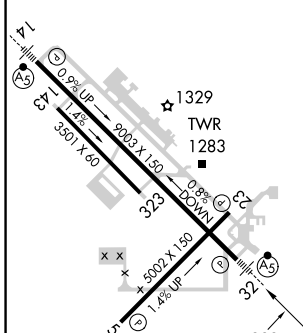
YOUNGSTOWN/WARREN RGNL (YNG)

RNP APCH - GPS.		MALSR 	MISSED APPROACH: Climb to 2900 direct OTNOE and hold.
ADF required.			
ASR Circling Rwy 5 and 23 NA at night. Procedure NA for aircraft with cockpit to wheel height exceeding 1.4 feet.			

ATIS 123.75	YOUNGSTOWN APP CON * 133.95 322.3	YOUNGSTOWN TOWER 119.5 263.0	GND CON 121.9 275.8	CLNC DEL 118.25
-----------------------	---	--	-------------------------------	---------------------------



ELEV 1192	D	TDZE 1186
-----------	----------	-----------



HIRL Rwy 14-32
MIRL Rwy 5-23
REIL Rws 5 and 23

FAF to MAP 4.7 NM

Knots	60	90	120	150	180
Min:Sec	4:42	3:08	2:21	1:53	1:34

2900	OTNOE	YN LOM	2706	143°	2900	Remain within 10 NM
			2800	323°		GS 3.00° TCH 34
4.7 NM						

CATEGORY	A	B	C	D
S-ILS 32	1436/24		250 (300-½)	
S-LOC 32	1640/24	454 (500-½)	1640/45	454 (500-¾)
C CIRCLING	1640-1 448 (500-1)	1660-1 468 (500-1)	1740-1½ 548 (600-1½)	1760-2 568 (600-2)

EC-2, 03 OCT 2024 to 31 OCT 2024

EC-2, 03 OCT 2024 to 31 OCT 2024