

APP CRS	Rwy Idg	5411
026°	TDZE	996
	Apt Elev	998

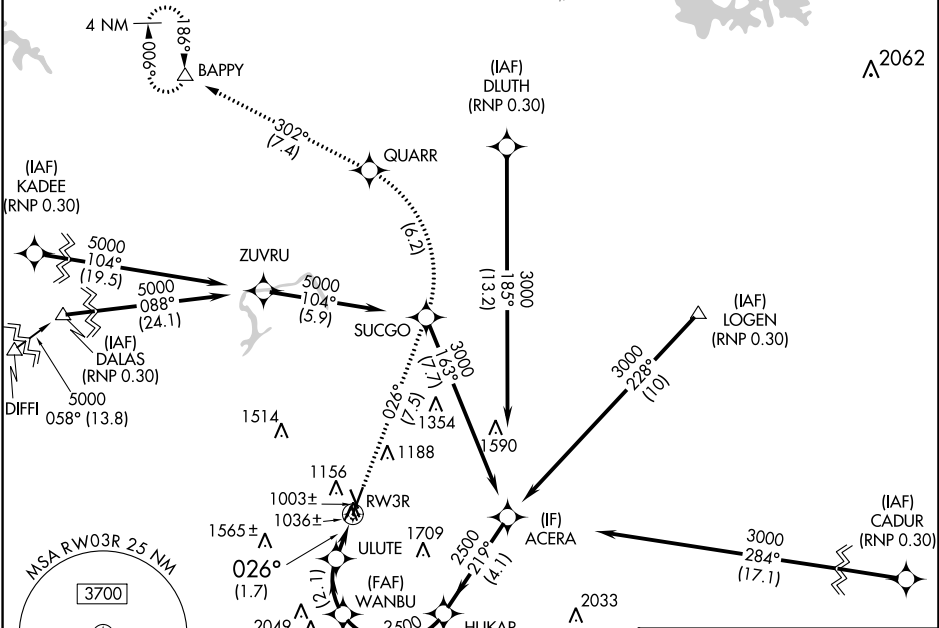
RNAV (RNP) RWY 3R

DEKALB-PEACHTREE (PDK)

▽ For uncompensated Baro-VNAV systems, procedure NA below 1°C (33°F) or above 45°C (114°F).
RF required. GPS required.

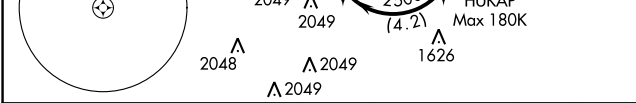
MISSED APPROACH: Climb to 4000 on track 026° to SUCGO then left turn to QUARR then on track 302° to BAPPY and hold.

ATIS	ATLANTA APP CON	PEACHTREE TOWER ★	GND CON	CLNC DEL	CLNC DEL	UNICOM	120.0
128.4	126.975 239.275	120.9(CTAF) 281.5	121.6	125.2	120.9 (When twr closed)	122.95	

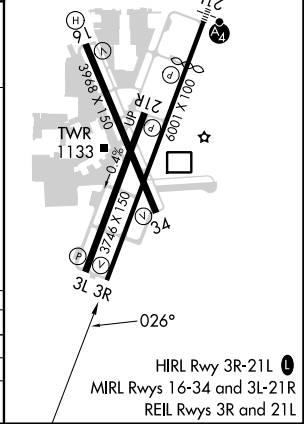
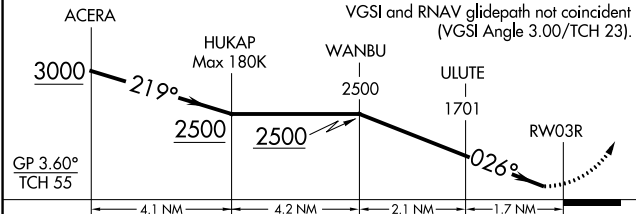
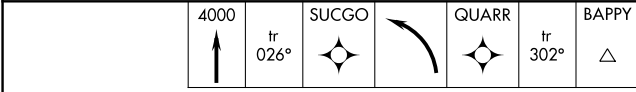


SE-4, 03 OCT 2024 to 31 OCT 2024

SE-4, 03 OCT 2024 to 31 OCT 2024



ELEV	998	D	TDZE	996
------	------------	----------	------	------------



CATEGORY	A	B	C	D
RNP 0.10 DA	1334-1	338 (400-1)		NA
RNP 0.30 DA	1441-1 3/8	445 (500-1 3/8)		NA

AUTHORIZATION REQUIRED

HIRL Rwy 3R-21L **0**
MIRL Rwy 16-34 and 3L-21R
REIL Rwy 3R and 21L