

PERU, INDIANA

TACAN or VOR RWY 5

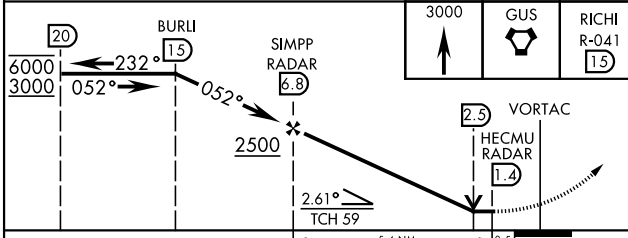
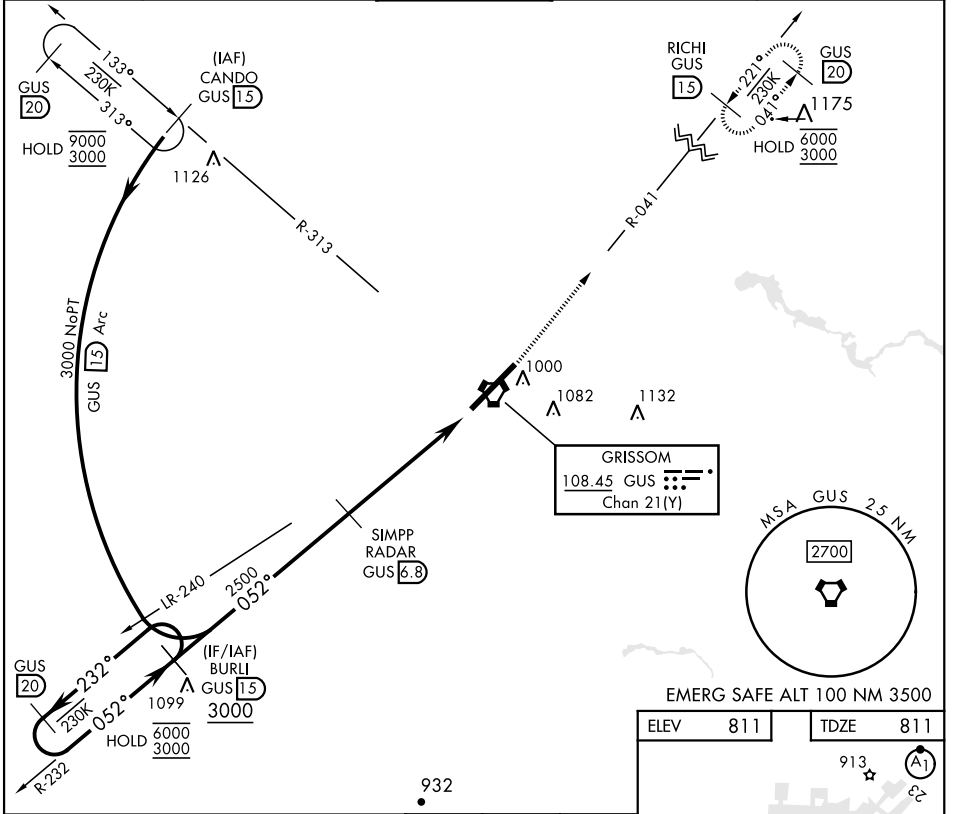
VORTAC GUS 108.45 Chan 21 (Y)	APCH CRS 052°	Rwy Idg 12,501 TDZE 811 Arprt Elev 811
---	-------------------------	---

[USAF]

GRISSOM ARB (KGUS)

RADAR, DME required	ALSF-1 A1	MISSED APPROACH: Climb to 3000 on the GUS VORTAC, R-041 to RICHI and hold. Missed approach requires use of RNAV or ATC RADAR monitoring.
---------------------	---------------------	--

ATIS 108.45 270.8	APP CON 121.05 351.8 123.85 291.675 (E) (W)	TOWER ★ 133.7 290.45	GND CON 128.425 275.8	CLNC DEL 128.425 275.8
-----------------------------	---	--------------------------------	---------------------------------	----------------------------------



EMERG SAFE ALT 100 NM 3500

ELEV 811	TDZE 811
----------	----------

HIRL Rwy 5-23

FAF to MAP 5.4 NM	Knots	60	90	120	150	180
	Min:Sec	5:24	3:36	2:42	2:10	1:48

PERU, INDIANA 40°39'N-86°09'W GRISSOM ARB (KGUS)

Amtd 9 14JUL22

TACAN or VOR RWY 5

EC-2, 03 OCT 2024 to 31 OCT 2024

EC-2, 03 OCT 2024 to 31 OCT 2024