

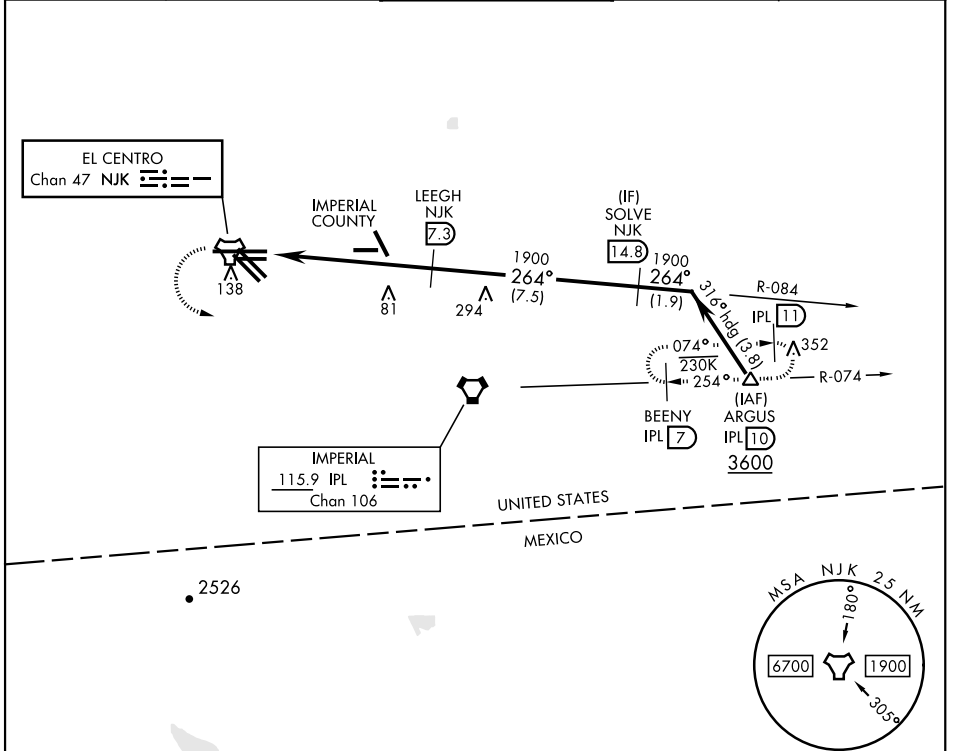
# TACAN RWY 26

TACAN NJK Chan <b>47</b>	APCH CRS <b>264°</b>	Rwy Idg TDZE Arpt Elev <b>9503</b> <b>-46</b> <b>-42</b>
-----------------------------	-------------------------	---

[USN]

EL CENTRO NAF (VRACIU FLD) (KNJK)

<p>▼ Circling to Rwy 30 NA at night.</p>		<p>MISSED APPROACH: Climb to 500, then climbing left turn to 2400 direct IPL VORTAC. Then direct BEENY via IPL R-074 and hold.</p>		
<p>ATIS ★ <b>269.275</b></p>	<p>APP CON/DEP CON <b>128.55 292.2</b></p>	<p>TOWER ★ <b>119.1 360.2</b></p>	<p>GND CON <b>121.9 254.35</b></p>	<p>CLNC DEL <b>340.2</b></p>



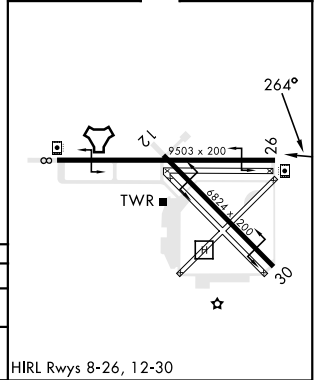
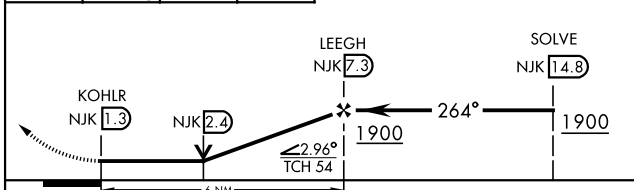
SW-3, 03 OCT 2024 to 31 OCT 2024

SW-3, 03 OCT 2024 to 31 OCT 2024

EMERG SAFE ALT 100 NM 17,000

500 ↑	2400 ↙	IPL R-074	BEENY IPL 7
----------	-----------	-----------	-------------

ELEV -42	TDZE -46
----------	----------



CATEGORY	A	B	C	D
S-26	380-1 426 (500-1)	380-1¼ 426 (500-1¼)		
<b>C</b> CIRCLING	480-1 522 (600-1)	480-1½ 522 (600-1½)	520-2 562 (600-2)	

HIRL Rwys 8-26, 12-30

EL CENTRO, CALIFORNIA  
Orig 13JUL23

32°50'N-115°40'W

EL CENTRO NAF (VRACIU FLD) (KNJK)

# TACAN RWY 26