

HI-ILS or LOC RWY 32

LOC I-LMT 109.5	APCH CRS 321°	Rwy Ildg 10,302
		TDZE 4095
		Arprt Elev 4095

AL-473 [USAF]

CRATER LAKE KLAMATH RGNL (KLMT)

DME required DME from LMT VORTAC.
 * When ALS inop, increase vis to RVR 40.

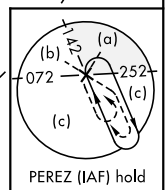
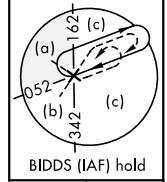
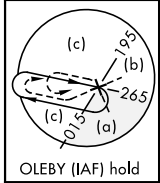
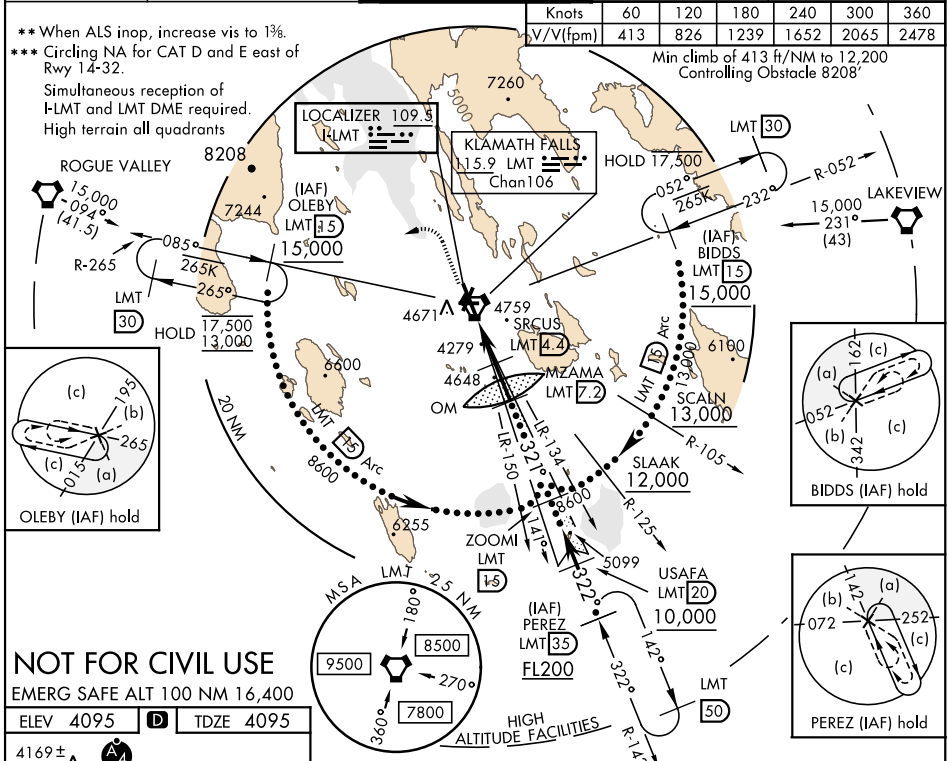


MISSED APPROACH: Climb to 5300 then climbing left turn to 13,000 hdg 230° and via LMT VORTAC R-265 to OLEBY/15 DME and hold. Cont climb-in hold to 13,000. Missed approach requires min climb of 413'/NM to 12,200.

ATIS 126.5 263.0	KINGSLEY APP CON 123.675 270.8	KINGSLEY TOWER ★ 133.975 (CTAF) 257.8	GND CON 121.9 348.6	UNICOM 122.95
----------------------------	--	---	-------------------------------	-------------------------

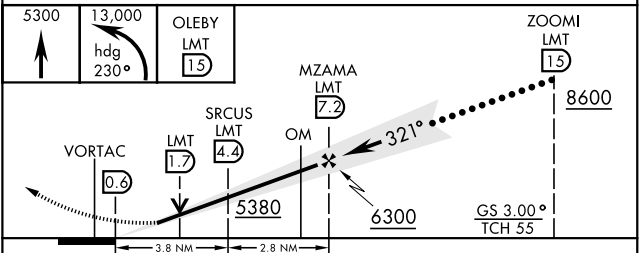
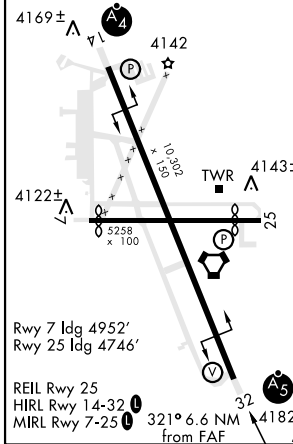
Knots	60	120	180	240	300	360
V/V(fpm)	413	826	1239	1652	2065	2478

** When ALS inop, increase vis to 1½.
 *** Circling NA for CAT D and E east of Rwy 14-32.
 Simultaneous reception of I-LMT and LMT DME required.
 High terrain all quadrants



NOT FOR CIVIL USE
 EMERG SAFE ALT 100 NM 16,400

ELEV 4095	D	TDZE 4095
------------------	----------	------------------



CATEGORY	C	D	E
S-ILS 32*	4295/24	200 (200-½)	
S-LOC 32**	4560/50	465 (500-1)	
CIRCLING ***	5420-3 1325 (1400-3)	5660-3 1565 (1600-3)	5700-3 1605 (1700-3)

HI-ILS or LOC RWY 32

NW-1, 03 OCT 2024 to 31 OCT 2024

NW-1, 03 OCT 2024 to 31 OCT 2024