

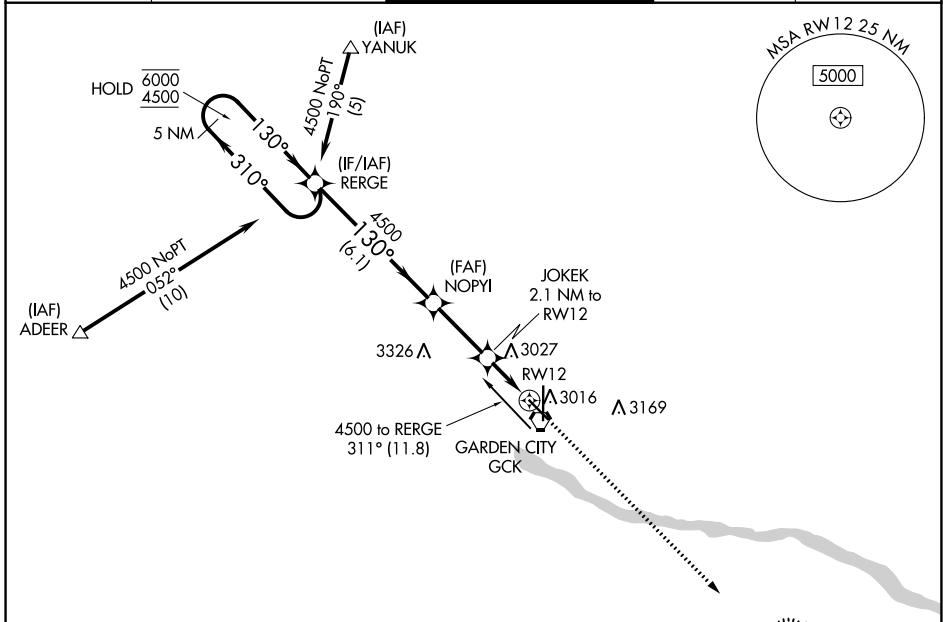
WAAS CH 77803 W12A	APP CRS 130°	Rwy ldg TDZE Apt Elev	5700 2891 2891
--	------------------------	-----------------------------	---

RNAV (GPS) RWY 12

GARDEN CITY RGNL (GCK)

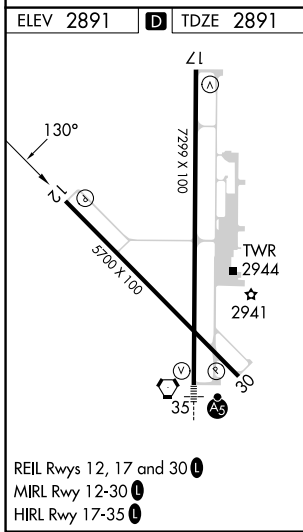
RNP APCH - GPS.		MISSED APPROACH: Climb to 4600 direct ORECA and hold.	
<p>▼ For uncompensated Baro-VNAV systems, ▲ procedure NA below -20°C or above 54°C.</p>			

ASOS 121,325	KANSAS CITY CENTER 125.2 285.425	GARDEN CITY TOWER* 118.15 (CTAF) 0 254.4	GND CON 119.0 254.4	UNICOM 122.95
------------------------	--	--	-------------------------------	-------------------------



NC-2, 03 OCT 2024 to 31 OCT 2024

NC-2, 03 OCT 2024 to 31 OCT 2024



5 NM Holding Pattern		NOPIY	JOKEK	4600	ORECA
6000	← 310°	4500	2.1 NM to RWY 12	↑	◆
4500	→ 130°	4500	1 NM to RWY 12		
GP 3.00°		3620	1 NM		
TCH 47		6.1 NM	2.8 NM	1.2 NM	1 NM
CATEGORY	A	B	C	D	
LPV DA	3141-1		250 (300-1)		
LNAV/VNAV DA	3141-1		250 (300-1)		
LNAV MDA	3240-1		349 (400-1)		
C CIRCLING	3320-1 429 (500-1)	3360-1 469 (500-1)	3480-1½ 589 (600-1½)	3480-2 589 (600-2)	