

VOR/DME or TACAN Y RWY 5R

AL-500 [USAF]

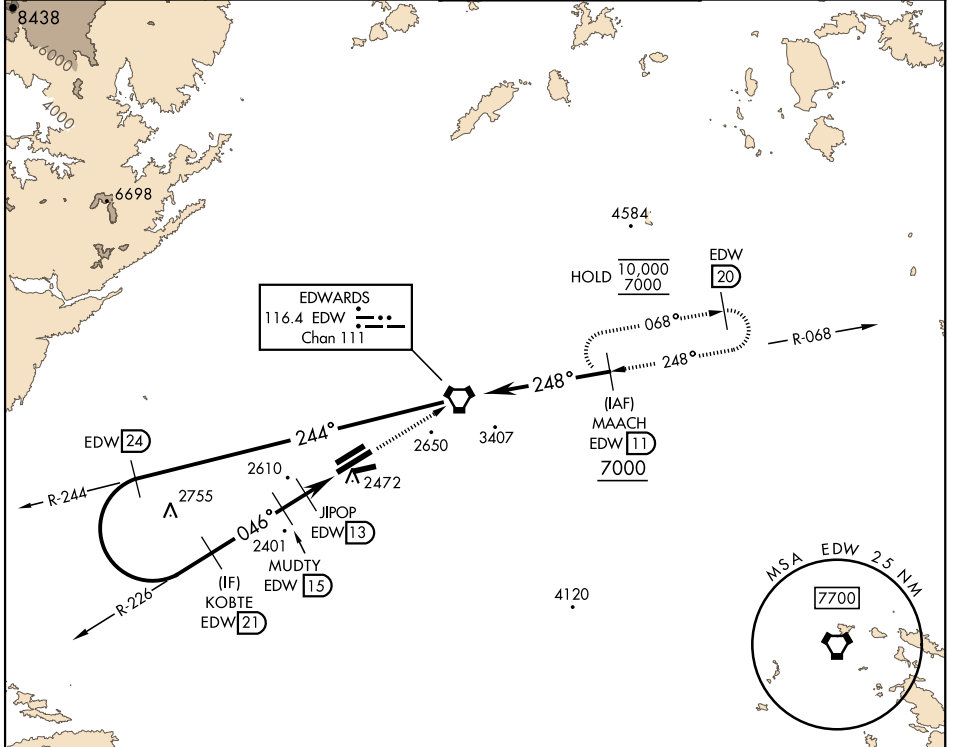
EDWARDS AFB (KEDW)

VORTAC EDW 116.4 Chan 111	APCH CRS 046°	Rwy ldg 15,024 TDZE 2303 Arpt Elev 2311
---	-------------------------	--

⚠ *Circling not authorized NW of Rwy 5L-23R.
Circling not authorized at night to Rwy 5L-23R.

MISSED APPROACH: Track EDW VORTAC R-226 to EDW. Intercept EDW R-068 to MAACH and hold. Maintain 7000. Missed approach requires use of RNAV or ATC radar monitoring.

ATIS ★ 127.425 269.9	JOSHUA APP/DEP CON 133.65 348.7	TOWER ★ 120.7 (CTAF) 318.1 (CTAF)	GND CON 121.8 225.4
--------------------------------	---	---	-------------------------------



SW-3, 03 OCT 2024 to 31 OCT 2024

SW-3, 03 OCT 2024 to 31 OCT 2024

EMERG SAFE ALT 100 NM 16,500		ELEV 2311	TDZE 2303																	
		EDW 7000 EDW R-226	TWR 2463 2379 1.5 024 x 300 05R 03L HIRL Rwy 5R-23L REIL Rwy 23L																	
<table border="1"> <thead> <tr> <th>CATEGORY</th> <th>A</th> <th>B</th> <th>C</th> <th>D</th> <th>E</th> </tr> </thead> <tbody> <tr> <td>S-5R</td> <td>2820-1 517 (600-1)</td> <td></td> <td>2820-1 3/8 517</td> <td>517</td> <td>(600-1 3/8)</td> </tr> <tr> <td>CIRCLING*</td> <td>2880-1 569 (600-1)</td> <td></td> <td>2880-1 1/2 569 (600-1 1/2)</td> <td>2880-2</td> <td>569 (600-2)</td> </tr> </tbody> </table>	CATEGORY	A		B	C	D	E	S-5R	2820-1 517 (600-1)		2820-1 3/8 517	517	(600-1 3/8)	CIRCLING*	2880-1 569 (600-1)		2880-1 1/2 569 (600-1 1/2)	2880-2	569 (600-2)	<p>Remain within 26 NM</p>
CATEGORY	A	B	C	D	E															
S-5R	2820-1 517 (600-1)		2820-1 3/8 517	517	(600-1 3/8)															
CIRCLING*	2880-1 569 (600-1)		2880-1 1/2 569 (600-1 1/2)	2880-2	569 (600-2)															

VOR/DME or TACAN Y RWY 5R