

VOR/DME SSM	APP CRS	Rwy Idg TDZE	5056
112.2	337°	716	
Chan 59		Apt Elev	716

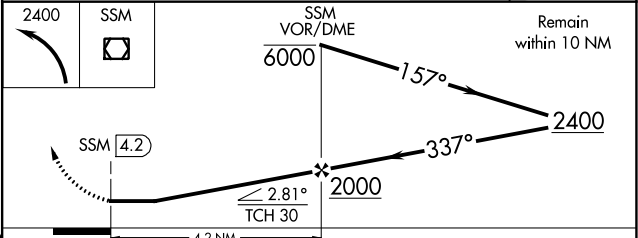
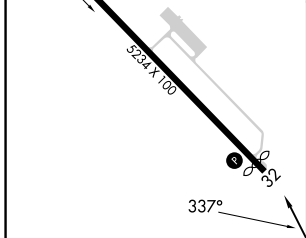
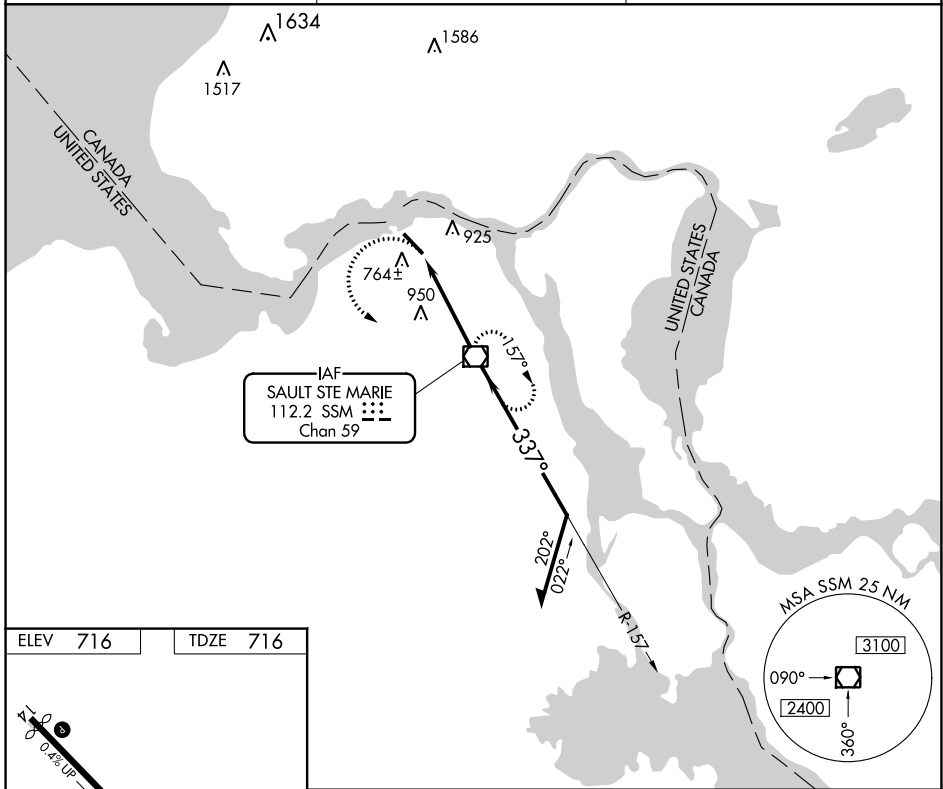
VOR RWY 32

SAULT STE MARIE MUNI/SANDERSON FLD (A.NJ)

⚠ When local altimeter setting not received, use Chippewa County Intl altimeter setting and increase all MDA 60 feet and increase S-32 Cat C visibility to 1¼ mile. Rwy 32 helicopter visibility reduction below ¾ SM NA.

MISSED APPROACH:
Climbing left turn to 2400
direct SSM VOR/DME and hold.

ASOS 118,375	TORONTO CENTER 132.65 344.5	UNICOM 122.7 (CTAF) 0
------------------------	---------------------------------------	---------------------------------



ELEV	716	TDZE	716
MIRL Rwy 14-32 REIL Rwys 14 and 32			
FAF to MAP 4.2 NM			
Knots	60	90	120 150 180
Min:Sec	4:12	2:48	2:06 1:41 1:24

CATEGORY	A	B	C	D
S-32	1260-1	544 (600-1)	1260-1½ 544 (600-1½)	NA
CIRCLING	1280-1	564 (600-1)	1320-1¾ 604 (700-1¾)	NA

EC-1, 03 OCT 2024 to 31 OCT 2024

EC-1, 03 OCT 2024 to 31 OCT 2024