

CLOVIS, NEW MEXICO

# RNAV (GPS) RWY 31

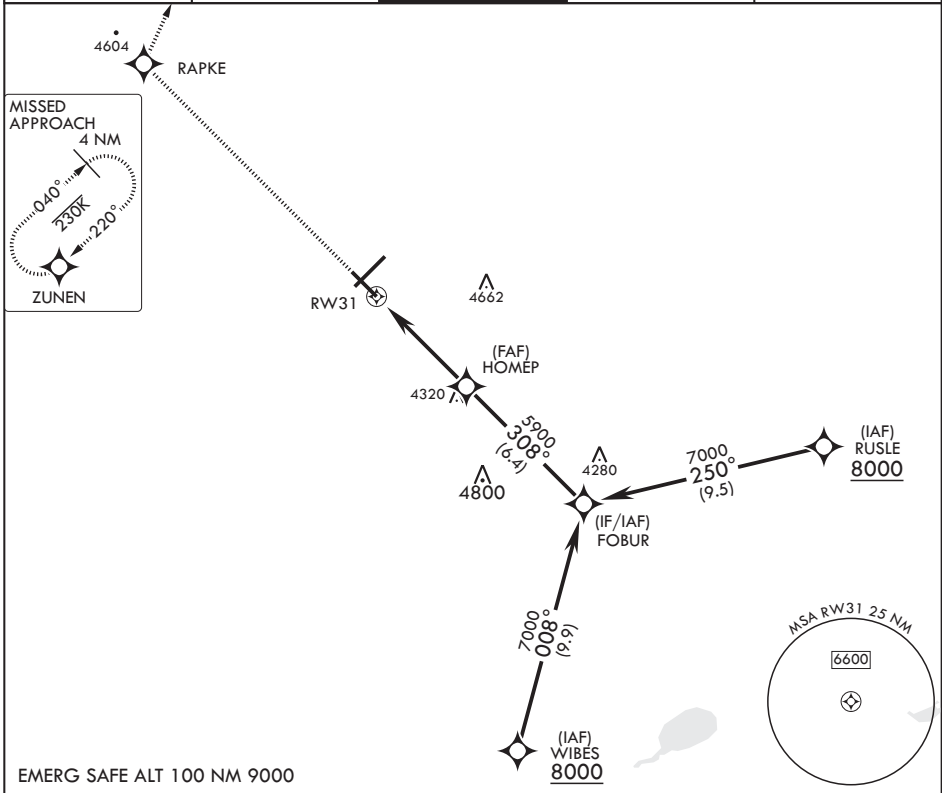
APCH CRS <b>308°</b>	Rwy Idg TDZE Arprt Elev	<b>8196</b> <b>4270</b> <b>4295</b>
-------------------------	-------------------------------	---

- (USAF)

CANNON AFB (KCVS)

RNP APCH	SSALR	MISSED APPROACH: Climb to 7000 direct RAPKE, then turn right to ZUNEN and hold.
----------	-------	---

ATIS <b>119.1 269.9</b>	CANNON APP CON <b>118.425 352.1</b>	TOWER <b>120.4 270.25</b>	GND CON <b>121.9 275.8</b>	CLNC DEL <b>120.2 293.225</b>
----------------------------	--	------------------------------	-------------------------------	----------------------------------



EMERG SAFE ALT 100 NM 9000

7000	RAPKE	FOBUR	ELEV 4295	TDZE 4270	
CATEGORY	A	B	C	D	E
LNAV MDA*	4720-½	450 (500-½)	4720-⅞	450	(500-⅞)
CIRCLING	4840-1	545 (600-1)	4860-1½ 565 (600-1½)	5000-2¼ 705 (800-2¼)	5020-2½ 725 (800-2½)

CLOVIS, NEW MEXICO

34°23'N - 103°19'W

CANNON AFB (KCVS)

Amdt 5 28DEC23

# RNAV (GPS) RWY 31

SW-1, 03 OCT 2024 to 31 OCT 2024

SW-1, 03 OCT 2024 to 31 OCT 2024