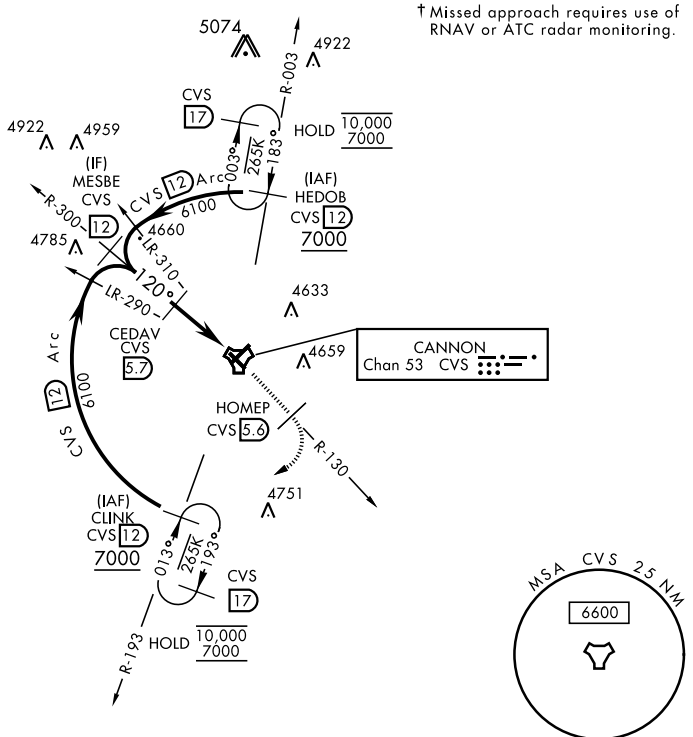


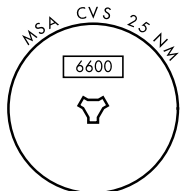
CLOVIS, NEW MEXICO

TACAN RWY 13

TACAN CVS Chan 53	APCH CRS 120°	Rwy Idg 8196 TDZE 4294 Arprt Elev 4295	AL-512 [USAF]	CANNON AFB (KCVS)
▼ * When ALS inop, increase CAT AB vis to 1 mile, CAT CDE vis to 1 1/8 miles.			SSALR (A3)	† MISSED APPROACH: Climb to 6000 out CVS TACAN R-130 to 5.6 DME (HOMEP) then turn right climbing to 7000 intercept CVS R-193 to 12 DME (CLINK) and hold.
ATIS 119.1 269.9	CANNON APP CON 118.425 352.1	CANNON TOWER 120.4 270.25	GND CON 121.9 275.8	CLNC DEL 120.2 293.225



† Missed approach requires use of RNAV or ATC radar monitoring.

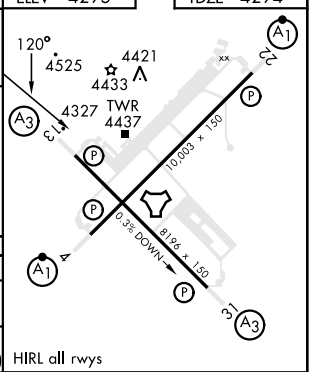


SW-1, 03 OCT 2024 to 31 OCT 2024

SW-1, 03 OCT 2024 to 31 OCT 2024

EMERG SAFE ALT 100 NM 9000

	ELEV 4295		TDZE 4294		
	MESBE R-300 12 6100	CEDAV 5.7	HOMEP CVS R-130 5.6 7000	CLINK CVS R-193 12 7000	TACAN 2.1 HASRU
CATEGORY	A	B	C	D	E
S-13*	4800-3/4	506 (600-3/4)	4800-1	506	(600-1)
CIRCLING	4840-1	545 (600-1)	4860-1 1/2 565 (600-1 1/2)	5000-2 1/4 705 (800-2 1/4)	5020-2 1/2 725 (800-2 1/2)
HIRL all rwys					



Amdt 2 09NOV17