

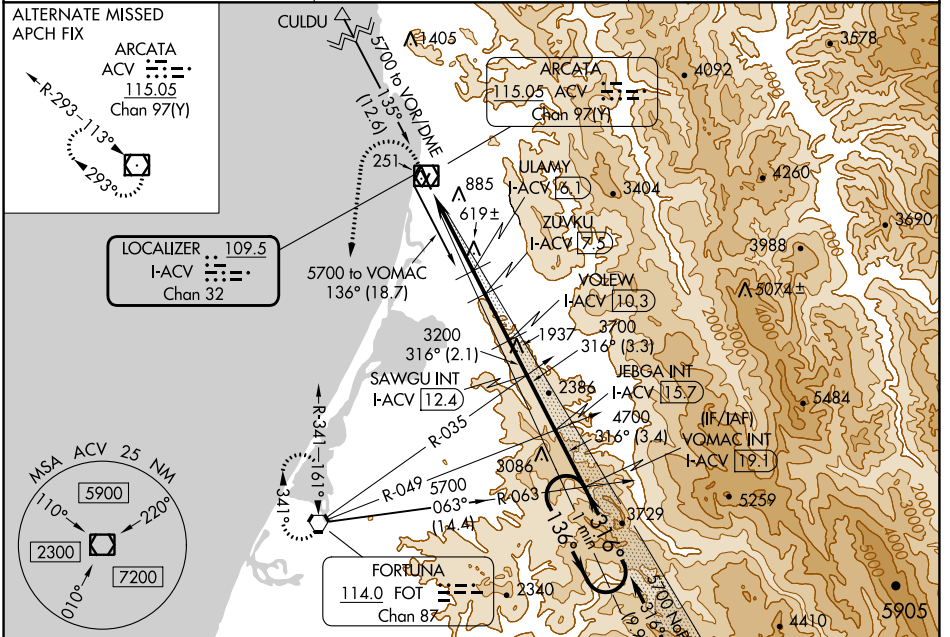
LOC/DME I-ACV 109.5 Chan 32	APP CRS 316°	Rwy Idg TDZE Apt Elev	5846 221 222
--	------------------------	-----------------------------	---

ILS or LOC RWY 32

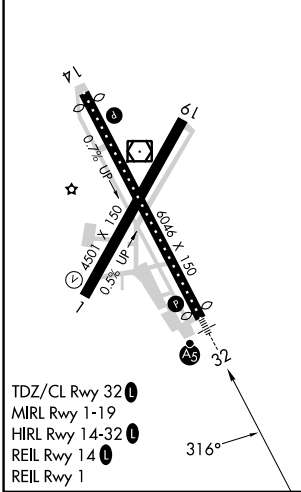
CALIFORNIA REDWOOD COAST-HUMBOLDT COUNTY (ACV)

<p>NA Circling NA northeast of Rwy 14-32. DME required.</p>	<p>MALSR</p>	<p>MISSED APPROACH: Climb to 800 then climbing left turn to 3000 direct FOT VORTAC and hold.</p>
--	---------------------	---

<p>ASOS 118.525</p>	<p>SEATTLE CENTER 124.85 306.3</p>	<p>UNICOM 123.0 (CTAF)</p>
---------------------------------------	--	--



ELEV 222	D	TDZE 221
----------	----------	----------



Use I-ACV DME when on the localizer course.
VGSi and ILS glidepath not coincident (VGSi Angle 3.00/TCH 43).

800	3000	FOT	VOMAC I-ACV 19.1	One Minute Holding Pattern
*LOC only				
I-ACV 1.1	*I-ACV 3	ULAMY I-ACV 6.1	ZUVKU I-ACV 7.5	VOLEW I-ACV 10.3
1860*	2320*	3200	3700	4700
1.9	3.1 NM	1.4 NM	2.8 NM	2.1 NM
3.3 NM	3.4 NM	GS 3.00° TCH 47		

CATEGORY	A	B	C	D
S-ILS 32	441/18 220 (300-1/2)			
S-LOC 32	880/24	659 (700-1/2)	880-1 3/8	659 (700-1 3/8)
C CIRCLING	880-1	658 (700-1)	880-1 7/8	880-2
			658 (700-1 7/8)	658 (700-2)

SW-2, 03 OCT 2024 to 31 OCT 2024

SW-2, 03 OCT 2024 to 31 OCT 2024