

WAAS CH 70608 W06A	APP CRS 051°	Rwy Idg 7400 TDZE 2291 Apt Elev 2320
--	------------------------	---

RNAV (GPS) RWY 6

COEUR D'ALENE/PAPPY BOYINGTON FLD (COE)

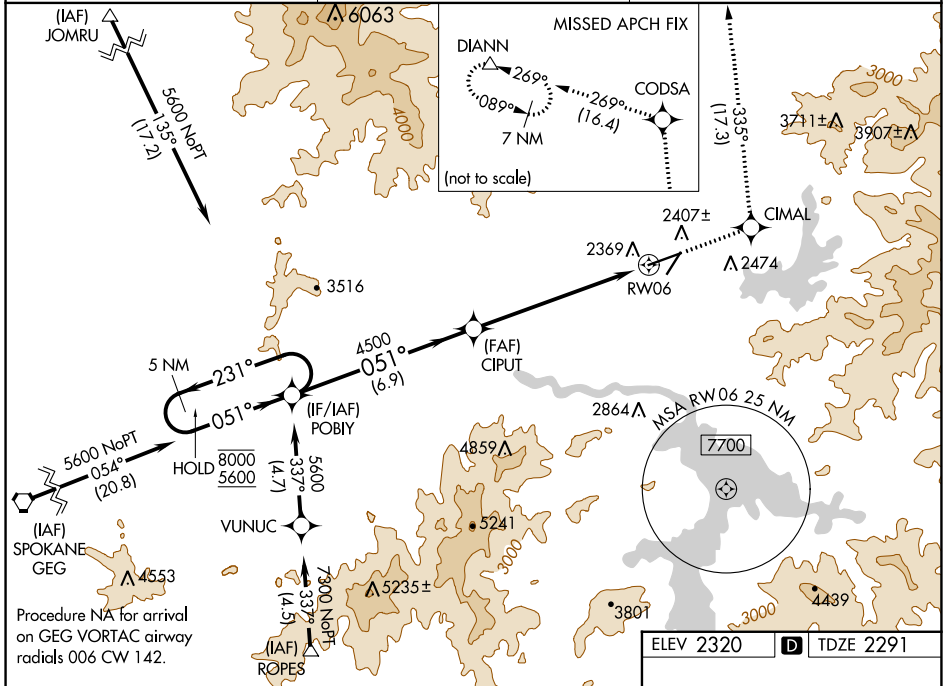
RNP APCH - GPS.

⚠ Circling Rwy 2 NA at night. For uncompensated Baro-VNAV systems, LNAV/VNAV NA below -21°C or above 53°C. Circling NA for Cat D southeast of Rwy 6-24.

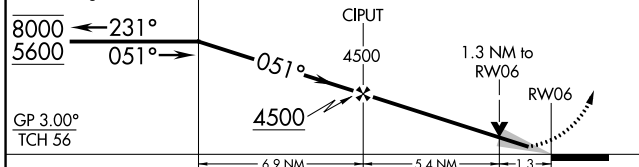
MALSR

MISSED APPROACH: Climb to 7000 direct CIMAL and on track 335° to CODSA and on track 269° to DIANN and hold.

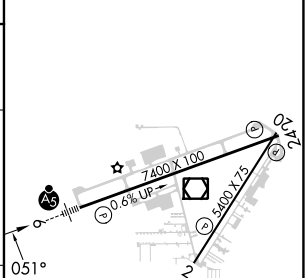
AWOS-3PT 135.075	SPOKANE APP CON 132.1 263.0	UNICOM 122.8 (CTAF)
----------------------------	---------------------------------------	-------------------------------



7000	CIMAL	tr 335°	CODSA	tr 269°	DIANN
------	-------	---------	-------	---------	-------



ELEV 2320	TDZE 2291
-----------	-----------



CATEGORY	A	B	C	D
LPV DA		2491-½	200 (200-½)	
LNAV/VNAV DA		2654-¾	363 (400-¾)	
LNAV MDA	2740-½	449 (500-½)	2740-1	449 (500-1)
CIRCLING	2740-1 420 (500-1)	2880-1 560 (600-1)	3020-2 700 (700-2)	3180-2¾ 860 (900-2¾)

MIRL Rwy 2-20

HIRL Rwy 6-24

REIL Rws 2 and 24

NW-1, 03 OCT 2024 to 31 OCT 2024

NW-1, 03 OCT 2024 to 31 OCT 2024