

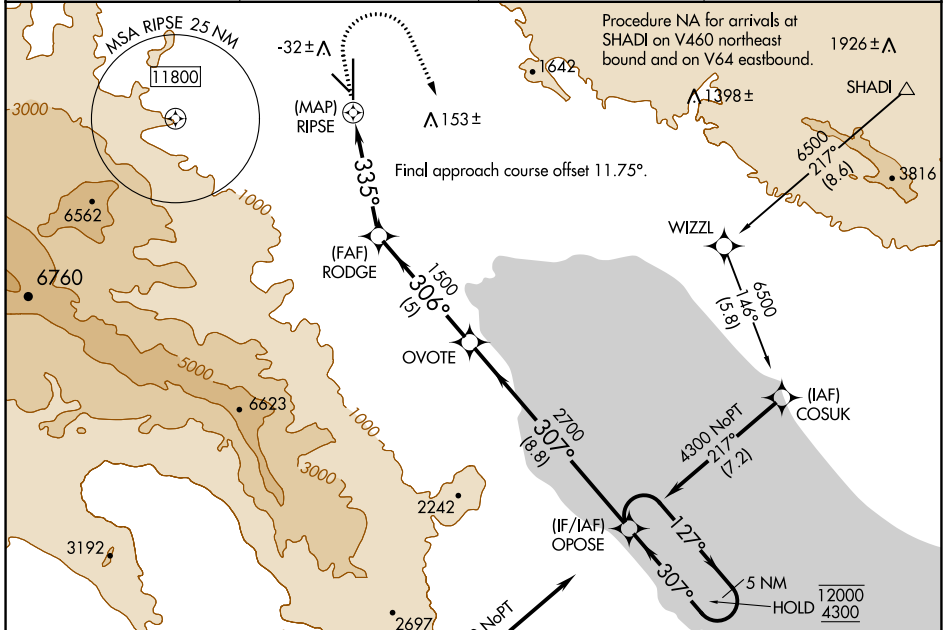
APP CRS	Rwy Idg	8500
335°	TDZE	-128
	Apt Elev	-114

RNAV (GPS) RWY 35

JACQUELINE COCHRAN RGNL (TRM)

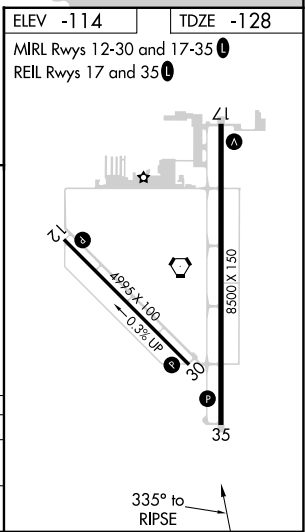
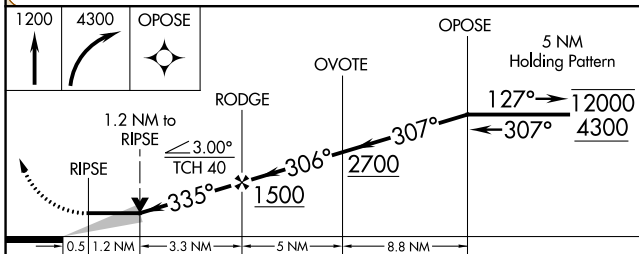
RNP APCH-GPS.		MISSED APPROACH: Climb to 1200 then climbing right turn to 4300 direct OPOSE and hold.	
---------------	--	--	--

ASOS 118.325	SOCAL APP CON 135.275 251.1	CLNC DEL 120.225	UNICOM 123.0 (CTAF) 0
------------------------	---------------------------------------	----------------------------	---------------------------------



ELEV -114	TDZE -128
MIRL Rwy 12-30 and 17-35	
REIL Rwy 17 and 35	

Procedure NA for arrivals at KARRO on V460 southwest bound.



CATEGORY	A	B	C	D
LNVA MDA	440-1 568 (600-1)		940-3 1068 (1100-3)	
C CIRCLING	440-1 554 (600-1)		940-3 1054 (1100-3)	

SW-3, 03 OCT 2024 to 31 OCT 2024

SW-3, 03 OCT 2024 to 31 OCT 2024