

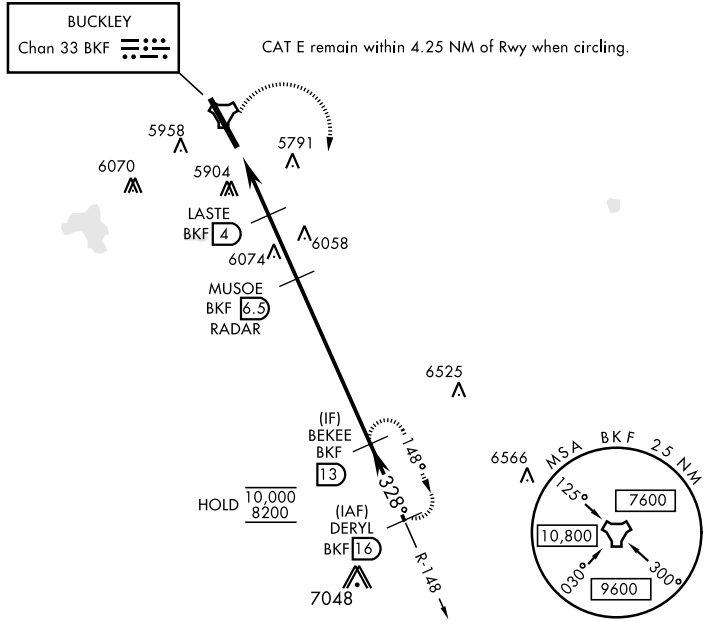
TACAN RWY 32

TACAN BKF Chan 33	APCH CRS 328°	Rwy ldg 11,006 TDZE 5663 Arprt Elev 5663	AL-538 [USAF]	BUCKLEY SFB (KBKF)
-----------------------------	-------------------------	---	---------------	--------------------

A1 MISSED APPROACH: Climbing right turn to 8200 and intercept BKF TACAN R-148 direct BEKEE and hold or as directed by ATC.
 * When ALS inop, increase CAT AB RVR to 55 and vis to 1 mile, CAT CDE vis to 1¾ miles.
 ** Circling NA east of Rwy 14-32.

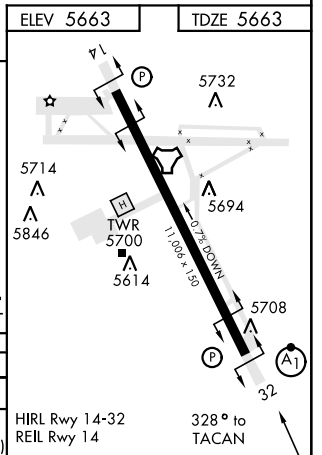
ATIS * 119.675 259.3	DENVER APP CON 128.45 251.075	TOWER * 121.0 291.675	GND CON 121.6 275.8	CLNC DEL 121.6 275.8
--------------------------------	---	---------------------------------	-------------------------------	--------------------------------

Missed approach requires use of RNAV or ATC RADAR monitoring.



EMERG SAFE ALT 100 NM 16,500

8200 BKF R-148	BEKEE BKF 13					
TACAN	CENAR 1.7	LASTE 4	MUSOE 6.5 RADAR	BEKEE 13	DERYL 16	8100
	6600	7400	8000	328°	8100	3.02°
	0.5 NM	2.3 NM	2.5 NM			TCH 45
CATEGORY	A	B	C	D	E	
S-32 *	6280/24	617 (700-½)	6280-1⅜	617 (700-1⅜)		
CIRCLING **	6280-1 617 (700-1)		6360-2 697 (700-2)	6400-2¼ 737 (800-2¼)	6420-2¾ 757 (800-2¾)	



TACAN RWY 32

SW-1, 03 OCT 2024 to 31 OCT 2024

SW-1, 03 OCT 2024 to 31 OCT 2024