

HI-TACAN Z RWY 13

TACAN OFF Chan 54	APCH CRS 122°	Rwy ldg 10,695 TDZE 1048 Arpt Elev 1048
-----------------------------	-------------------------	--

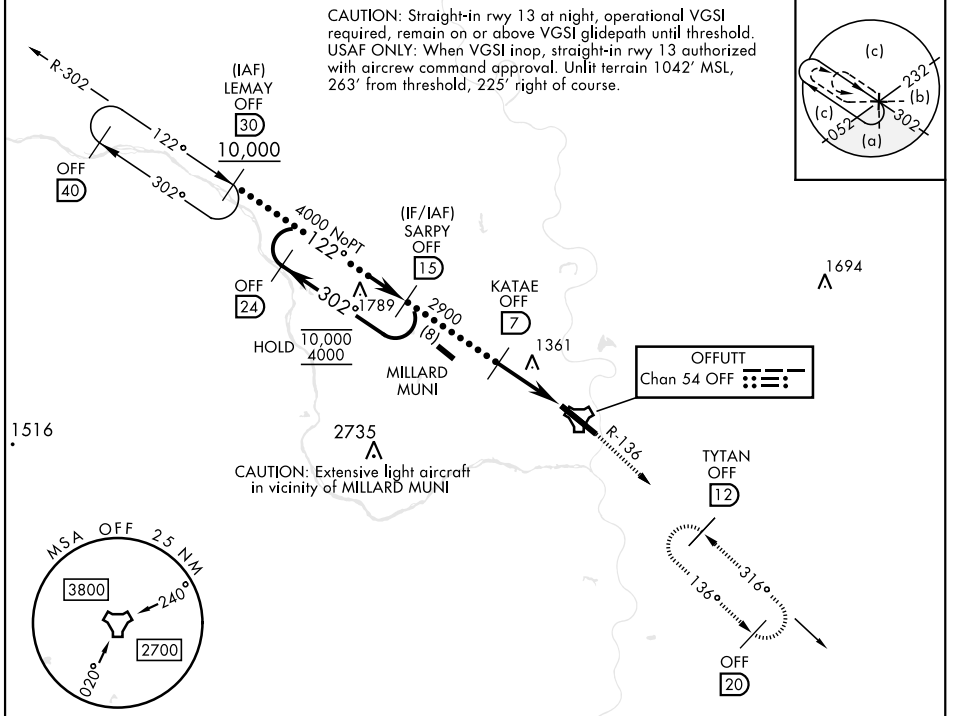
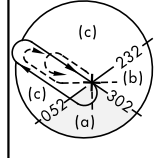
[USAF]

OFFUTT AFB (KOFF)

<p>▼ * When ALS inop, increase vis to 1½ miles. ** Circling not authorized N of Rwy 13-31.</p>	<p>ALSIF-1 (A1)</p>	<p>MISSED APPROACH: Climb to 3000 via OFF TACAN R-136 to TYTAN and hold.</p>
---	--------------------------------	--

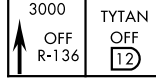
<p>ATIS 126.025 273.5</p>	<p>OMAHA APP CON 124.5 263.0 (E) 120.1 354.05 (W)</p>	<p>TOWER 123.7 279.625</p>	<p>GND CON 121.7 289.4</p>
--------------------------------------	---	---------------------------------------	---------------------------------------

CAUTION: Straight-in rwy 13 at night, operational VGSI required, remain on or above VGSI glidepath until threshold. USAF ONLY: When VGSI inop, straight-in rwy 13 authorized with aircrew command approval. Unlit terrain 1042' MSL, 263' from threshold, 225' right of course.

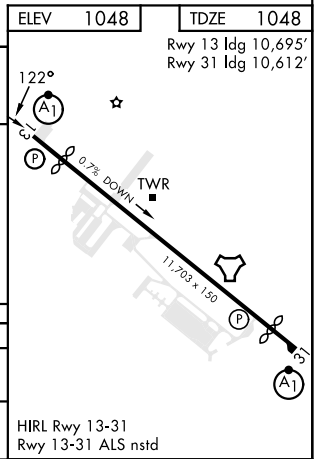
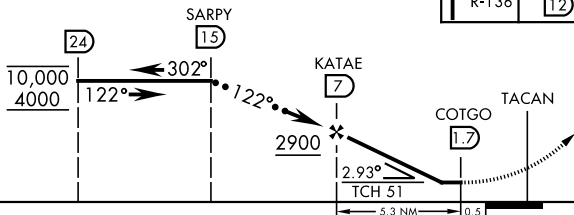


EMERG SAFE ALT 100 NM 4700

VGSI and descent angles not coincident (VGSI Angle 3.00/TCH 55).



ELEV 1048 TDZE 1048
Rwy 13 ldg 10,695'
Rwy 31 ldg 10,612'



CATEGORY	C	D	E
S-13 *	1620-1¼	572	(600-1¼)
CIRCLING**	1660-1¼ 612 (700-1¼)	1940-3	892 (900-3)

HI-TACAN Z RWY 13

NC-2, 03 OCT 2024 to 31 OCT 2024

NC-2, 03 OCT 2024 to 31 OCT 2024