

TACAN Y RWY 13

TACAN OFF Chan 54	APCH CRS 122°	Rwy Ldg 10,695 TDZE 1048 Arprt Elev 1048
-----------------------------	-------------------------	---

[USAF]

OFFUTT AFB (KOFF)

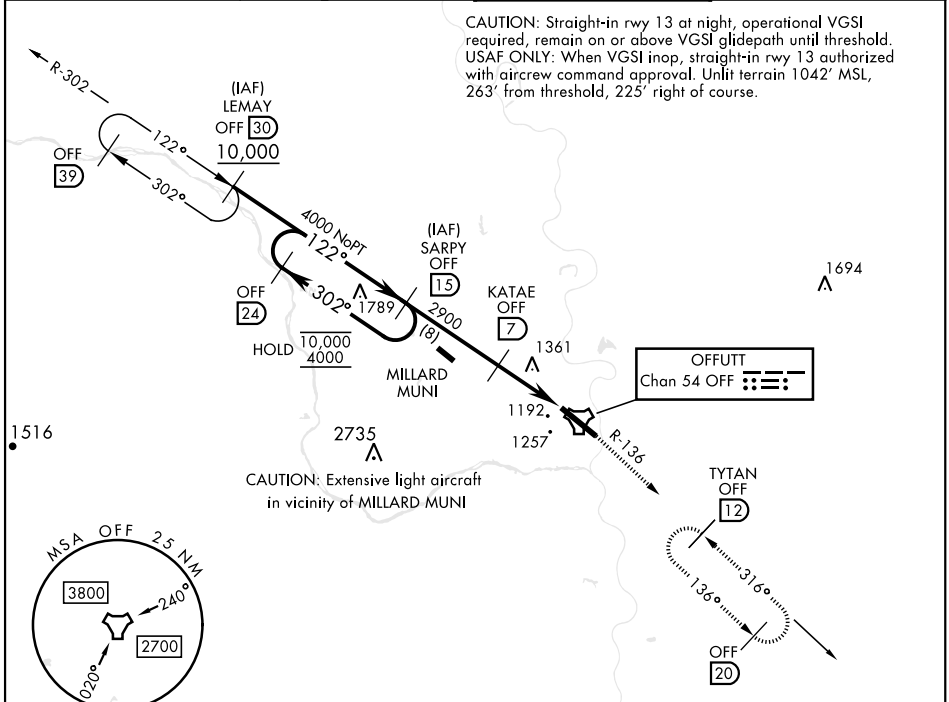
▼ * When ALS inop, increase CAT AB RVR to 55, vis to 1 mile, CAT CDE vis to 1½ miles.
 ** Circling not authorized N of Rwy 13-31.



MISSED APPROACH: Climb to 3000 via OFF TACAN R-136 to TYTAN and hold.

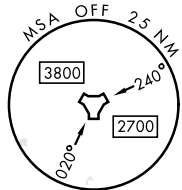
ATIS 126.025 273.5	OMAHA APP CON 120.1 354.05 (W) 124.5 263.0 (E)	TOWER 123.7 279.625	GND CON 121.7 289.4
------------------------------	--	-------------------------------	-------------------------------

CAUTION: Straight-in rwy 13 at night, operational VGSI required, remain on or above VGSI glidepath until threshold.
 USAF ONLY: When VGSI inop, straight-in rwy 13 authorized with aircrew command approval. Unlit terrain 1042' MSL, 263' from threshold, 225' right of course.



NC-2, 03 OCT 2024 to 31 OCT 2024

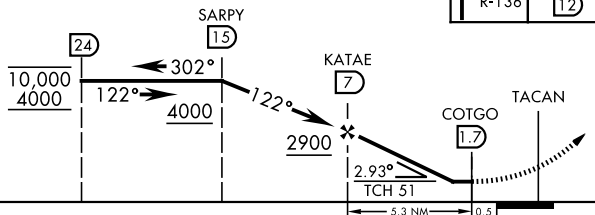
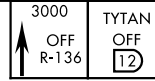
NC-2, 03 OCT 2024 to 31 OCT 2024



CAUTION: Extensive light aircraft in vicinity of MILLARD MUNI

EMERG SAFE ALT 100 NM 4700

VGSI and descent angles not coincident (VGSI Angle 3.00/TCH 55).



ELEV 1048	TDZE 1048
-----------	-----------

Rwy 13 Ldg 10,695'
 Rwy 31 Ldg 10,612'

CATEGORY	A	B	C	D	E
S-13 *	1620/50	572 (600-1)	1620-1¼	572 (600-1¼)	
C CIRCLING **	1620-1	572 (600-1)	1660-1¾ 612 (700-1¾)	1940-3	892 (900-3)

HIRL Rwy 13-31
 Rwy 13-31 ALS nstd

TACAN Y RWY 13