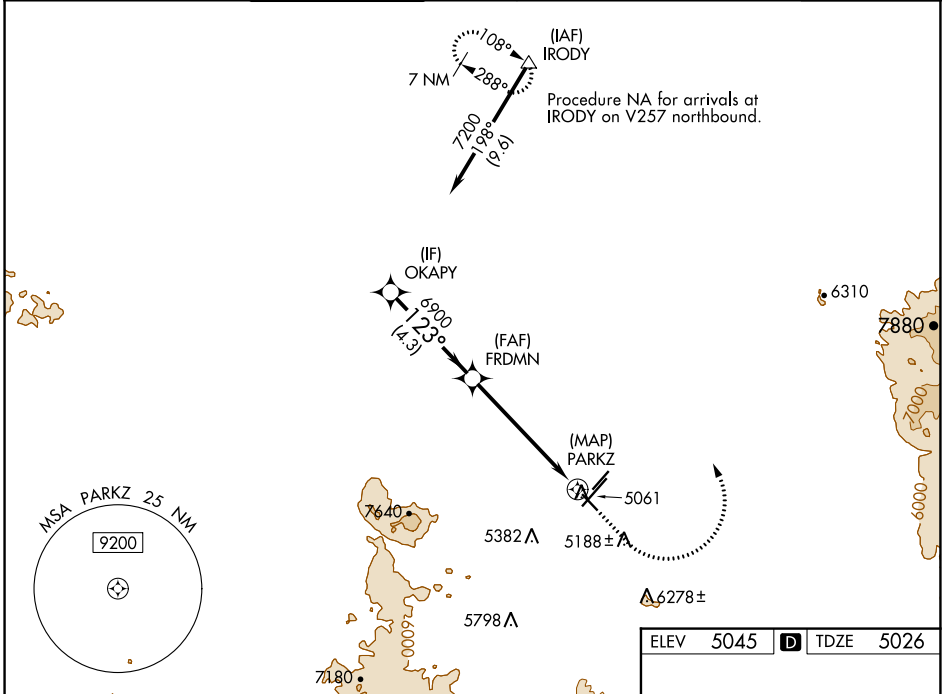


WAAS CH 49235 W12A	APP CRS 123°	Rwy Idg TDZE Apt Elev	4258 5026 5045
--	------------------------	-----------------------------	---

RNAV (GPS) RWY 12

PRESCOTT RGNL-ERNEST A LOVE FLD (PRC)

RNP APCH.				MISSED APPROACH: Climb to 5500 then climbing left turn to 9000 direct IRODY and hold, continue climb-in-hold to 9000.	
⚠ For uncompensated Baro-VNAV systems, LNAV/VNAV NA below -11°C or above 49°C. Rwy 12 helicopter visibility reduction below 1 SM NA. Straight-in Rwy 12 NA at night, Circling Rwy 12, 3L, 30 NA at night.					
ATIS 127.2	PHOENIX APP CON 133.575 281.55	PRESCOTT TOWER * 125.3 (CTAF) 257.9	GND CON 121.7	CLNC DEL 119.25	128.75 (12-30) 125.3 (CTAF) (3R-21L) UNICOM 122.95

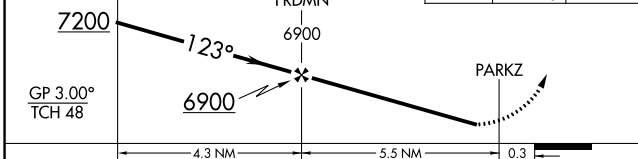


SW-4, 03 OCT 2024 to 31 OCT 2024

SW-4, 03 OCT 2024 to 31 OCT 2024

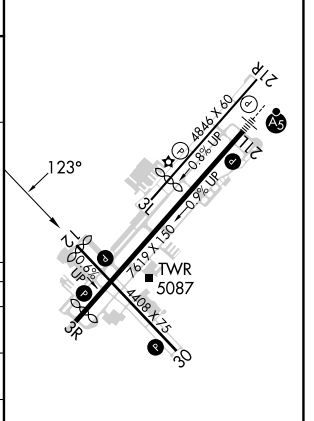
VGSI and RNAV glidepath not coincident (VGSI Angle 4.24/TCH 52).

OKAPY	FRDMN	IRODY
7200	6900	5500 9000



ELEV 5045	TDZE 5026
-----------	-----------

CATEGORY	A	B	C	D
LPV DA	5276-1		250 (300-1)	
LNAV/VNAV DA	5432-1 $\frac{3}{8}$		406 (400-1 $\frac{3}{8}$)	
LNAV MDA	5520-1	494 (500-1)	5520-1 $\frac{3}{8}$	494 (500-1 $\frac{3}{8}$)
CIRCLING	5520-1 475 (500-1)	5760-1 715 (800-1)	6080-3 1035 (1100-3)	6680-3 1635 (1700-3)



MIRL Rwy 3L-21R and 3R-21L
 MIRL Rwy 12-30
 REIL Rwy 3R, 12, and 30