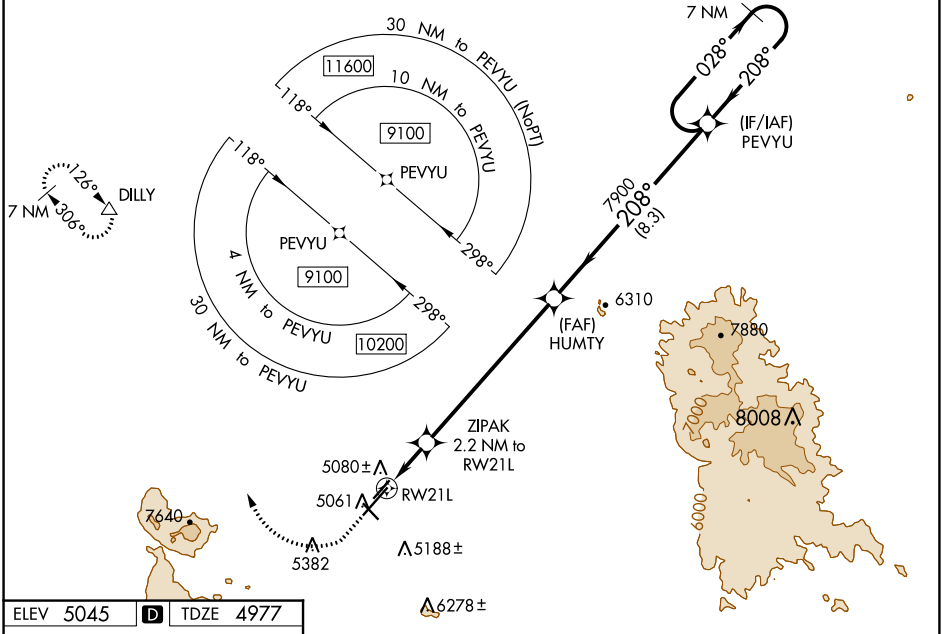


WAAS CH <b>40002</b> W21A	APP CRS <b>208°</b>	Rwy Idg TDZE Apt Elev	<b>7619</b> <b>4977</b> <b>5045</b>
---------------------------------	------------------------	-----------------------------	---

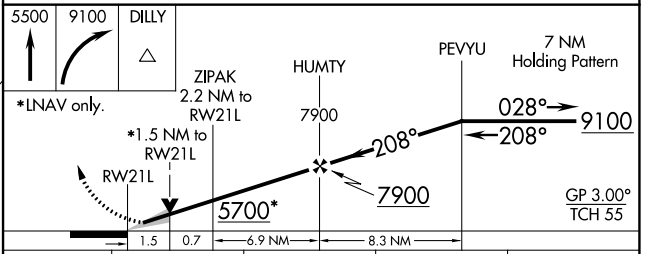
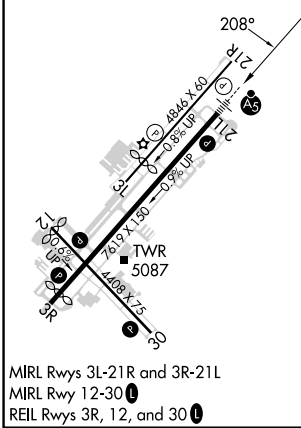
# RNAV (GPS) RWY 21L

PRESCOTT RGNL-ERNEST A LOVE FLD (P.R.C)

RNP APCH - GPS.				MALSR		MISSED APPROACH: Climb to 5500 then climbing right turn to 9100 direct DILLY and hold, continue climb-in-hold to 9100.	
<p>▼ For uncompensated Baro-VNAV systems, LNAV/VNAV NA below -11°C or above 47°C. For inoperative ALS, increase LPV all Cats visibility to 1 SM, LNAV/VNAV all Cats visibility to 1½ SM, and LNAV Cat C/D visibility to 1¾ SM. Circling Rwy 3L, 12, 30 NA at night. # Missed approach requires a minimum climb of 345 feet per NM to 7300.</p>							
ATIS <b>127.2</b>	PHOENIX APP CON <b>133,575 281.55</b>	PRESCOTT TOWER * <b>125.3</b> (CTAF) <b>257.9</b>	GND CON <b>121.7</b>	CLNC DEL <b>119.25</b>	<b>128.75</b> (12-30) <b>125.3</b> (CTAF) (3R-21L)	UNICOM <b>122.95</b>	



ELEV 5045	D	TDZE 4977
-----------	---	-----------



CATEGORY	A	B	C	D
LPV DA	# 5177-½ 200 (200-½)			
LPV DA	5277-½ 300 (300-½)			
LNAV/VNAV DA	5391-¾ 414 (400-¾)			
LNAV MDA	5480-½ 503 (500-½)	5480-1 503 (500-1)		
CIRCLING	5520-1 475 (500-1)	5760-1 715 (800-1)	6080-3 1035 (1100-3)	6680-3 1635 (1700-3)

SW-4, 03 OCT 2024 to 31 OCT 2024

SW-4, 03 OCT 2024 to 31 OCT 2024