

CAMP SPRINGS, MARYLAND

RNAV (GPS) RWY 1R

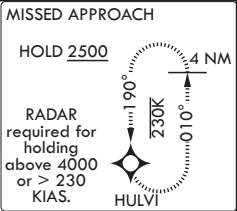
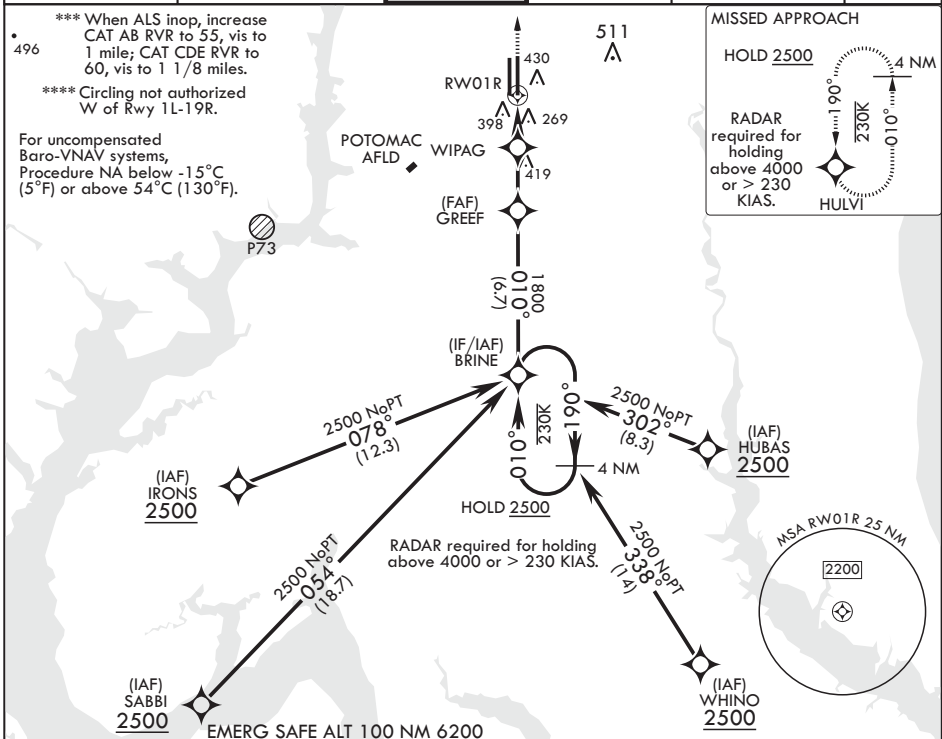
WAAS CH 52206 W01B	APCH CRS 010°	Rwy ldg TDZE 265 Arprt Elev 280
--------------------------	------------------	---------------------------------------

AL-561 (USAF)

JOINT BASE ANDREWS (KADW)

DME/DME RNP-0.3 NA	ALS-1	MISSED APPROACH: Climb to 2500 direct HULVI and hold.
<p>▼ * When ALS inop increase RVR to 40, vis to 3/4 mile. ** When ALS inop, increase RVR to 60, vis to 1 1/8 miles.</p>		

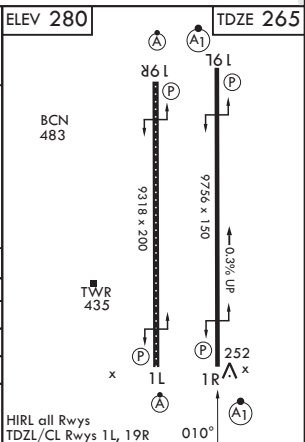
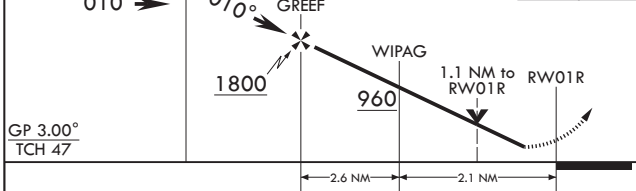
ATIS 133.675 251.05	POTOMAC APP CON 128.0 335.5	TOWER 118.4 349.0	GND CON 121.8 275.8	CLNC DEL 127.55 285.475	CPDLC
------------------------	--------------------------------	----------------------	------------------------	----------------------------	-------



NE-3, 03 OCT 2024 to 31 OCT 2024

NE-3, 03 OCT 2024 to 31 OCT 2024

4 NM Holding Pattern	BRINE	VGSI and RNAV glidepath not coincident (VGSI Angle 3.00/TCH 61).	2500 HULVI	ELEV 280	TDZE 265
2500 ← 190°	← 010°		↑		



CATEGORY	A	B	C	D	E
LPV DA*		465/24	200	(200-½)	
LNAV/VNAV DA**		660/35	395	(400-¾)	
LNAV MDA***	660/24	395 (400-½)	660/35	395 (400-¾)	
☐ CIRCLING****	780-1	500 (500-1)	780-1½ 500 (500-1½)	840-2	560 (600-2)

CAMP SPRINGS, MARYLAND

38°49'N - 76°52'W

JOINT BASE ANDREWS (KADW)

Amdt 3 18MAY23

RNAV (GPS) RWY 1R