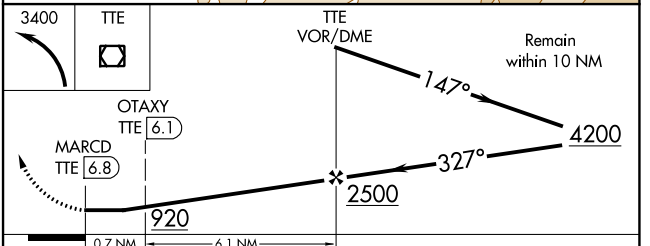
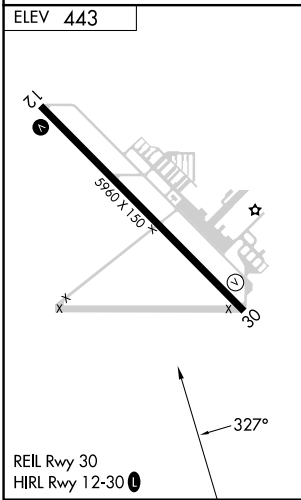
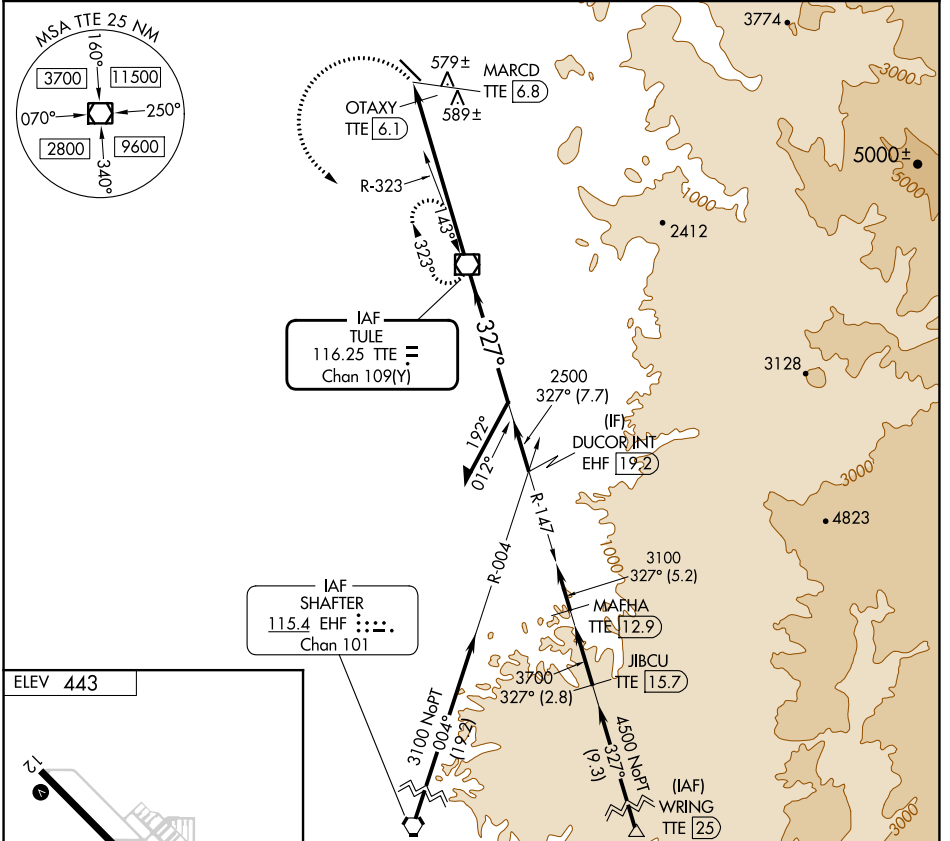


VOR/DME TTE 116.25 Chan 109(Y)	APP CRS 327°	Rwy Idg TDZE Apt Elev N/A N/A 443
--	------------------------	---

VOR-A
PORTERVILLE MUNI (P'TV)

DME required.	MISSED APPROACH: Climbing left turn to 3400 direct TTE VOR/DME and hold.
---------------	--

AWOS-3PT 134.625	BAKERFIELD APP CON* 120.5	UNICOM 122.8 (CTAF)
----------------------------	-------------------------------------	-------------------------------



CATEGORY	A	B	C	D
<input checked="" type="checkbox"/> CIRCLING	880-1 437 (500-1)	900-1 457 (500-1)	960-1½ 517 (600-1½)	1100-2 657 (700-2)

SW-2, 03 OCT 2024 to 31 OCT 2024

SW-2, 03 OCT 2024 to 31 OCT 2024