

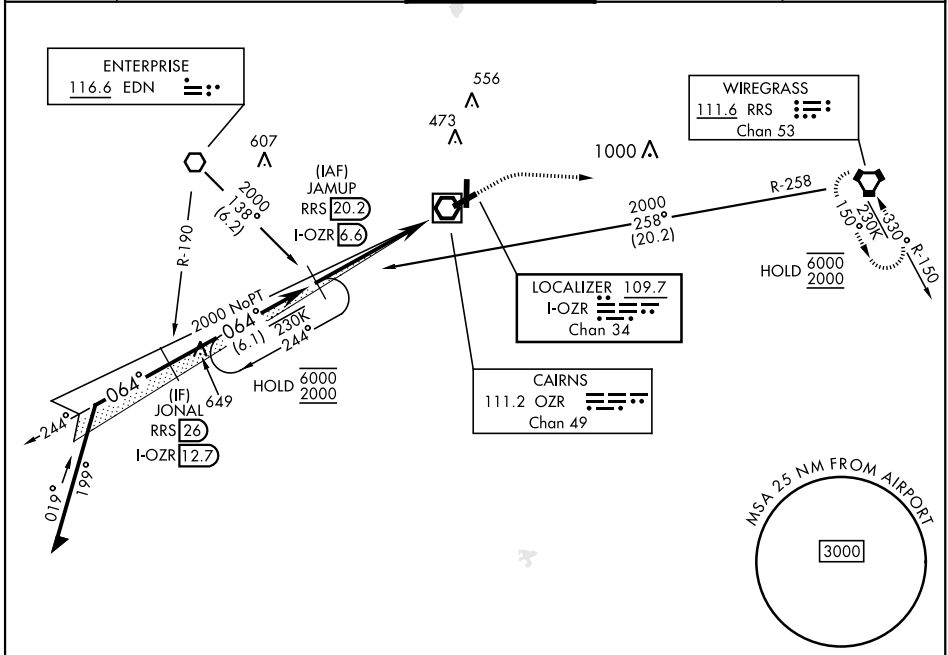
ILS or LOC RWY 6

LOC/DME I-OZR 109.7 Chan 34	APCH CRS 064°	Rwy Idg TDZE Arprt Elev 4546 298 301
---	-------------------------	--

[USA]

CAIRNS AAF (KOZR)

RADAR or DME required *When ALS inop, increase RVR to 40, vis to 3/4 mile. **When ALS inop, increase CAT AB RVR to 55, vis to 1 mile, CAT CD vis to 1 3/8 miles.		MALSR 	MISSED APPROACH: Climb to 800 then climbing right turn to 2000 direct RRS VORTAC and hold; or when directed by ATC, climb to 800 then climbing left turn to 2000 heading 290° within 10 NM (RADAR required).		
ATIS 111.2 316.15	APP CON ★ 021°-120° 125.4 327.125 121°-219° 133.75 270.35 220°-340° 133.45 239.275 341°-020° 121.1 319.25	TOWER ★ 135.2 (CTAF) 248.55	GND CON ★ 121.9 288.25	CLNC DEL ★ 118.075 380.1	



SE-4, 03 OCT 2024 to 31 OCT 2024

SE-4, 03 OCT 2024 to 31 OCT 2024

Remain within 10 NM JAMUP RRS 20.2 I-OZR 6.6 244° 6000 2000 064° 2000 GS 2.70° TCH 57	800 	2000 	RRS 	ELEV 301	TDZE 298
	CHINOOK HILL PAD TW R TWR 81 150 5025 x 36 4546 x 150 064°				
CATEGORY S-ILS 6* S-LOC 6** CIRCLING	A 780/24 479 (500-1)	B 482 (500-1/2) 820-1 519 (600-1)	C 200 (200-1/2) 780/50 599 (600-1 1/2)	D 482 (500-1) 900-2 599 (600-2)	HIRL Rwy 6-24 MRL Rwy 18-36

ILS or LOC RWY 6