

MILTON, FLORIDA

# ILS Z or RNAV (GPS) RWY 14

LOC/DME I-NSE <b>111.75</b> Chan <b>54(Y)</b>	APCH CRS <b>139°</b>	Rwy Idg TDZE Arprt Elev <b>6001</b> <b>199</b> <b>199</b>
---	-------------------------	--

[USN]

WHITING FLD NAS - NORTH (KNSE)

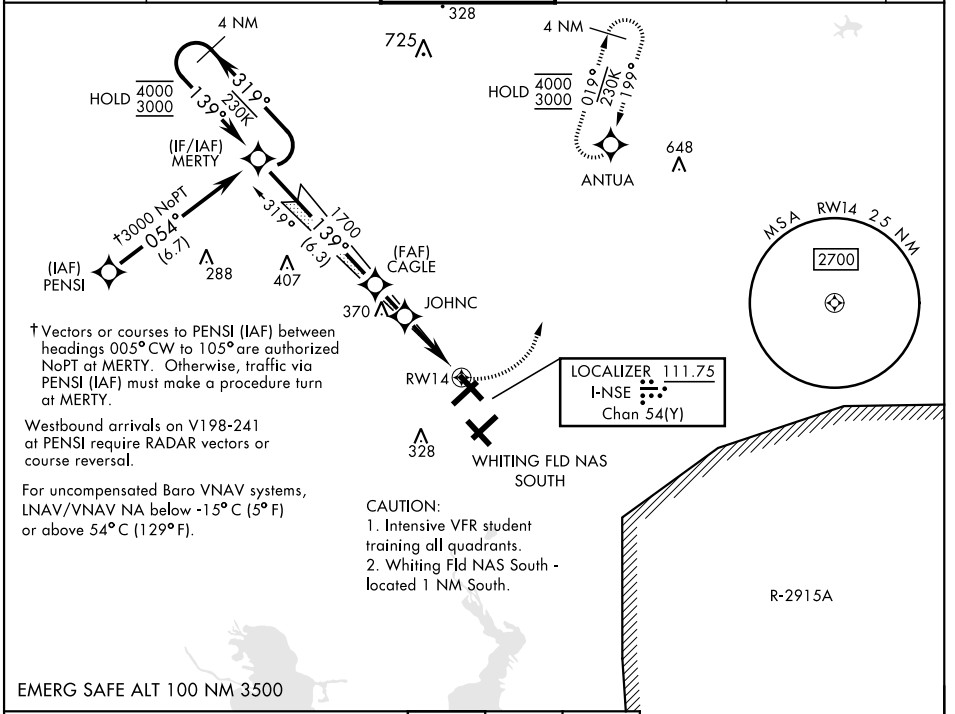
RNAV1-GPS for ILS.  
RNP APCH for LNAV/VNAV, LNAV.



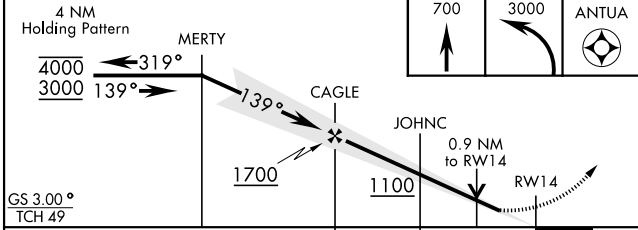
MISSED APPROACH: Climb to 700, then climbing left turn to 3000 direct to ANTUA and hold. Continue climb in hold. Contact Pensacola APP CON.

- \* When ALS inop, increase vis to 3/4 mile.
- \*\* When ALS inop, increase vis to 1 mile.
- \*\*\* Circling not authorized S of Rws 5 and 32.

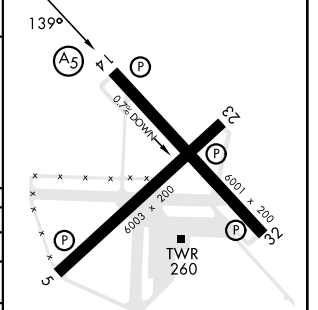
ATIS ★ <b>290.325</b>	PENSACOLA APP CON <b>127.35 278.8</b>	NORTH WHITING TOWER ★ <b>121.4 306.925</b>	GND CON <b>251.15</b>	CLNC DEL <b>257.775</b>	ASR
--------------------------	--	---	--------------------------	----------------------------	-----



EMERG SAFE ALT 100 NM 3500



ELEV	199	TDZE	199
------	-----	------	-----



CATEGORY	A	B	C	D
S-ILS 14*	399-1/2	200	(200-1/2)	
LNAV/VNAV DA*	449-1/2	250	(300-1/2)	
LNAV MDA**	520-1/2	321	(400-1/2)	
CIRCLING***	560-1 361 (400-1)	660-1 461 (500-1)	660-1/2 461 (500-1/2)	760-2 561 (600-2)

HIRL all rws

MILTON, FLORIDA  
Amdt 6 18APR24

30°43'N-87°01'W

WHITING FLD NAS - NORTH (KNSE)

# ILS Z or RNAV (GPS) RWY 14

SE-3, 03 OCT 2024 to 31 OCT 2024

SE-3, 03 OCT 2024 to 31 OCT 2024