

MILTON, FLORIDA

23362

RNAV (GPS) RWY 23

APCH CRS 229°	Rwy Idg 6003
TDZE 183	
Arprt Elev 199	

[USN]

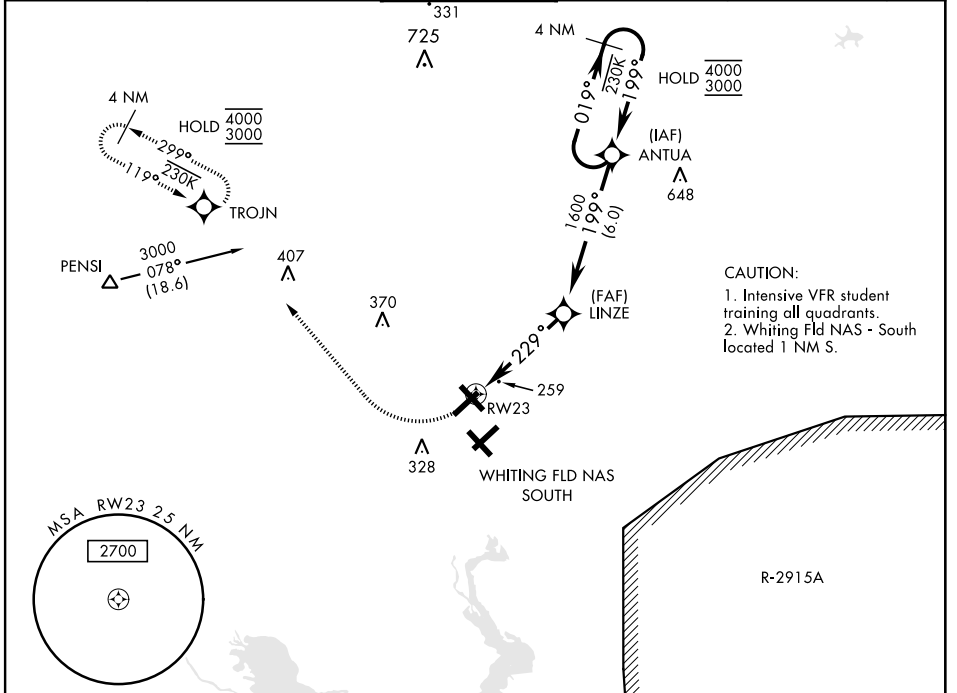
WHITING FLD NAS - NORTH (KNSE)

RNP APCH

* Circling not authorized S of Rwy 5 and 32.

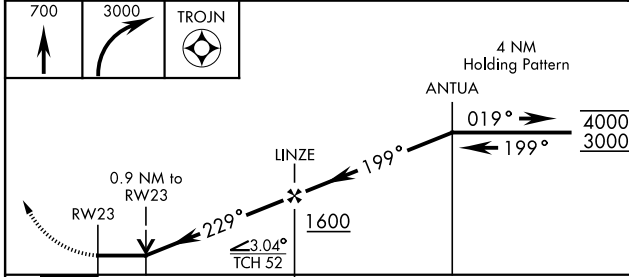
MISSED APPROACH: Climb to 700, then climbing right turn to 3000 direct TROJN and hold. Continue climb in hold. Contact Pensacola APP CON.

ATIS ★ 290.325	PENSACOLA APP CON 127.35 278.8	NORTH WHITING TOWER ★ 121.4 306.925	GND CON 251.15	CLNC DEL 257.775	ASR
--------------------------	--	--	--------------------------	----------------------------	-----

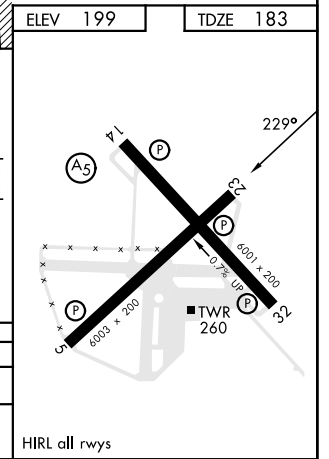


EMERG SAFE ALT 100 NM 3500

ELEV 199	TDZE 183
----------	----------



CATEGORY	A	B	C	D
LNAV MDA	520-1	337	(400-1)	
CIRCLING*	560-1 361 (400-1)	660-1 461 (500-1)	660-1½ 461 (500-1½)	760-2 561 (600-2)



MILTON, FLORIDA
Amdt 4 28DEC23

30°43'N-87°01'W

WHITING FLD NAS - NORTH (KNSE)

RNAV (GPS) RWY 23

SE-3, 03 OCT 2024 to 31 OCT 2024

SE-3, 03 OCT 2024 to 31 OCT 2024