

TACAN RWY 14

TACAN NSE Chan 70	APCH CRS 127°	Rwy Ldg TDZE Arpt Elev 6001 199 199
-----------------------------	-------------------------	---

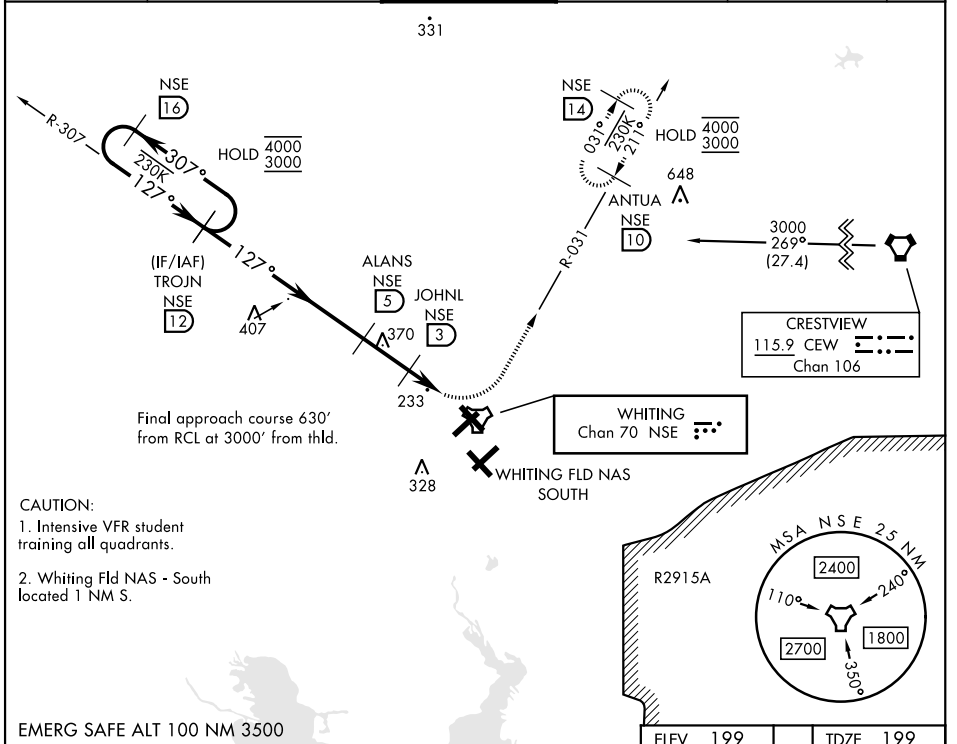
[USN]

WHITING FLD NAS - NORTH (KNSE)

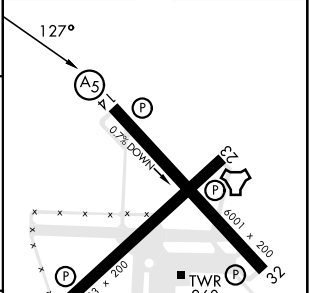
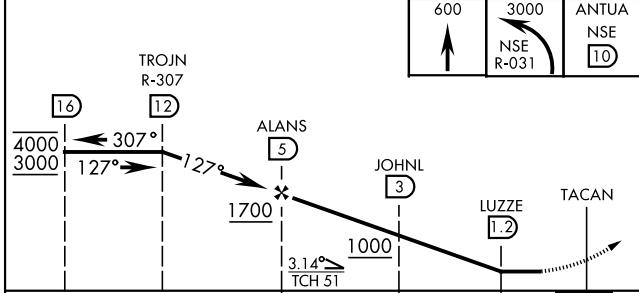
▼ * Circling not authorized S of Rwy 5 and 32.

MALSR (A5) MISSED APPROACH: Climb to 600, then climbing left turn to 3000, intercept NSE TACAN R-031 to ANTUA and hold. Continue climb in hold. Contact Pensacola APP CON.

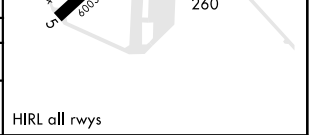
ATIS ★ 290.325	PENSACOLA APP CON 127.35 278.8	NORTH WHITING TOWER ★ 121.4 306.925	GND CON 251.15	CLNC DEL 257.775	ASR
--------------------------	--	--	--------------------------	----------------------------	-----



ELEV 199	TDZE 199
----------	----------



CATEGORY	A	B	C	D
S-14		500 - 1	301 (400 - 1)	
CIRCLING*	560-1 361 (400-1)	660-1 461 (500-1)	660-1½ 461 (500-1½)	760-2 561 (600-2)



TACAN RWY 14

SE-3, 03 OCT 2024 to 31 OCT 2024

SE-3, 03 OCT 2024 to 31 OCT 2024