

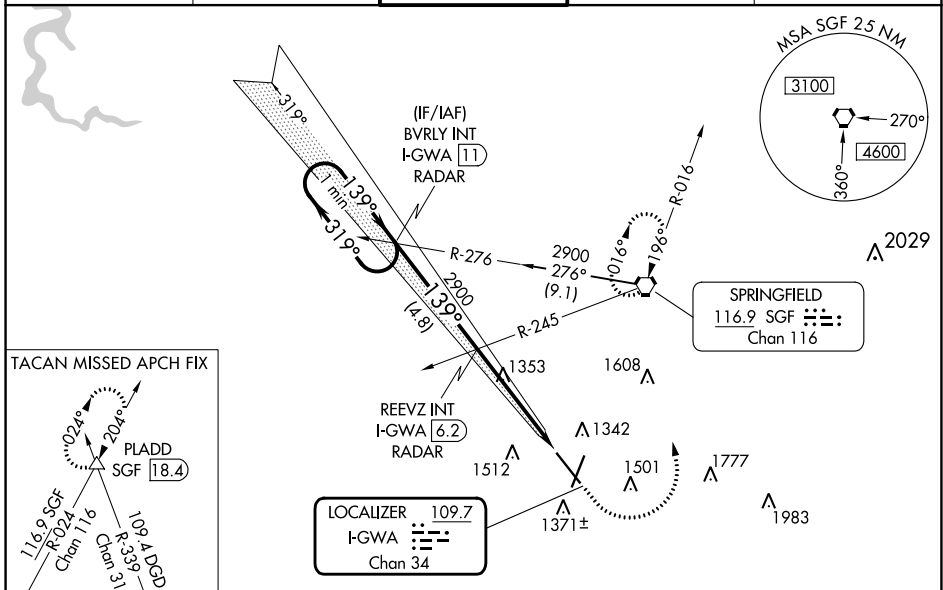
LOC/DME I-GWA <b>109.7</b> Chan <b>34</b>	APP CRS <b>139°</b>	Rwy ldg TDZE Apt Elev <b>8000</b> <b>1260</b> <b>1268</b>
---	------------------------	--

# ILS or LOC RWY 14

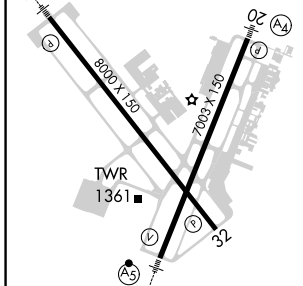
SPRINGFIELD-BRANSON NTL (SGF)

Helicopter visibility reduction below 3/4 SM NA. Inoperative table does not apply to S-ILS 14. For inoperative MALS/R, increase S-LOC 14 all Cats visibility to 1.	MALS/R 	MISSED APPROACH: Climb to 1800 then climbing left turn to 2900 to SGF VORTAC and hold. (TACAN aircraft continue on SGF VORTAC R-024 to PLADD INT and hold NE, RT, 204° inbound).

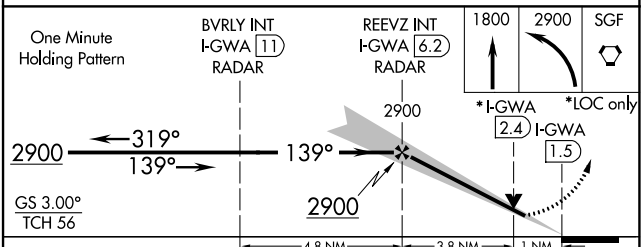
ATIS <b>135.125</b>	SPRINGFIELD APP CON <b>124.95 290.5</b>	SPRINGFIELD TOWER <b>119.9 257.8</b>	GND CON <b>121.9 251.15</b>	CLNC DEL <b>123.675</b>
------------------------	--	---	--------------------------------	----------------------------



ELEV 1268	D	TDZE 1260
-----------	---	-----------



REIL Rwy 32	HIRL Rws 2-20 and 14-32
FAF to MAP 4.7 NM	
Knots	60 90 120 150 180
Min:Sec	4:42 3:08 2:21 1:53 1:34



CATEGORY	A	B	C	D
S-ILS 14		1517-3/4 257 (300-3/4)		
S-LOC 14		1620-3/4 360 (400-3/4)		
CIRCLING	1760-1 492 (500-1)	1820-1 552 (600-1)	1820-1 1/2 552 (600-1 1/2)	1920-2 652 (700-2)

NC-3, 03 OCT 2024 to 31 OCT 2024

NC-3, 03 OCT 2024 to 31 OCT 2024