

VORTAC SGF 116.9 Chan 116	APP CRS 196°	Rwy Idg TDZE 1262 Apt Elev 1268	7003
---	------------------------	---	-------------

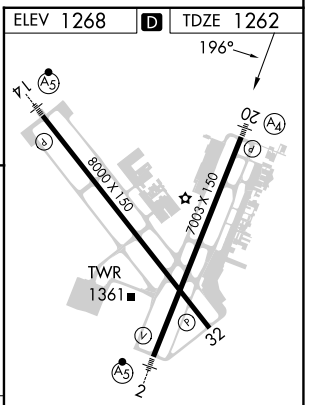
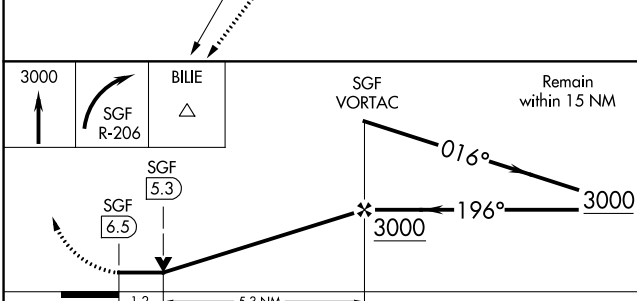
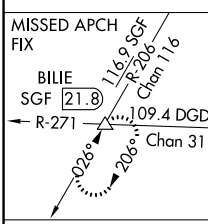
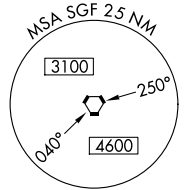
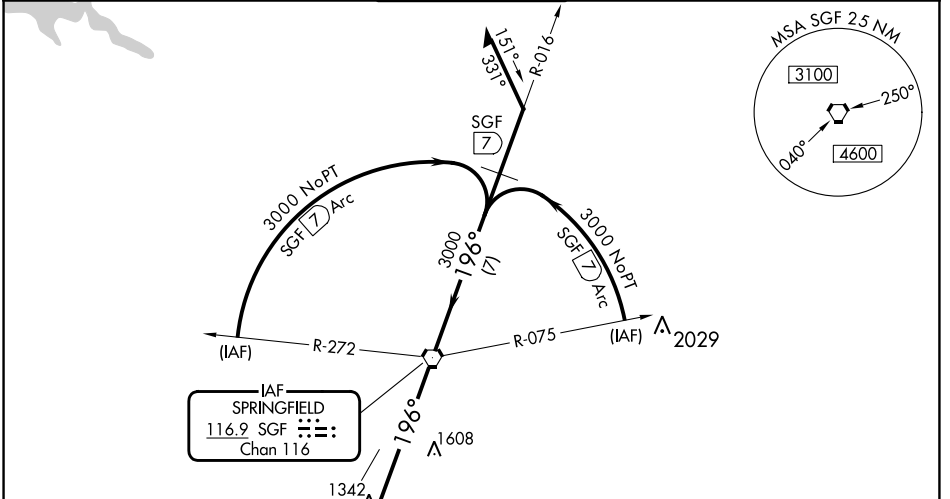
VOR or TACAN RWY 20

SPRINGFIELD-BRANSON NTL (SGF)

▼ Inoperative table does not apply to Cat C. Helicopter visibility reduction below $\frac{3}{4}$ SM not authorized. When local altimeter setting not received, use Monett altimeter setting and increase all MDA 100 feet, increase S-20 Cat C/D/E visibility $\frac{1}{4}$ mile, increase Circling Cat C/E visibility $\frac{1}{4}$ mile. VDP NA when using Monett altimeter setting.

▲ MISSED APPROACH: Climb to 3000 then right turn to intercept SGF R-206 to BILIE INT/SGF 21.8 DME and hold.

ATIS 135.125	SPRINGFIELD APP CON 124.95 290.5	SPRINGFIELD TOWER 119.9 257.8	GND CON 121.9 251.15	CINC DEL 123.675
------------------------	--	---	--------------------------------	----------------------------



CATEGORY	A	B	C	D	E	REIL Rwy 32 HIRL Rws 2-20 and 14-32 FAF to MAP 6.5 NM				
S-20	1700- $\frac{3}{4}$	438 (500- $\frac{3}{4}$)	1700-1 $\frac{1}{4}$ 438 (500-1 $\frac{1}{4}$)	1700-1 $\frac{1}{2}$	438 (500-1 $\frac{1}{2}$)					
CIRCLING	1760-1 492 (500-1)	1820-1 552 (600-1)	1820-1 $\frac{1}{2}$ 552 (600-1 $\frac{1}{2}$)	1920-2 652 (700-2)	2080-3 812 (900-3)					
	Knots					60	90	120	150	180
	Min:Sec					6:30	4:20	3:15	2:36	2:10

NC-3, 03 OCT 2024 to 31 OCT 2024

NC-3, 03 OCT 2024 to 31 OCT 2024