

WAAS CH <b>49220</b> <b>W02A</b>	APP CRS <b>016°</b>	Rwy Idg <b>7002</b> TDZE <b>2</b> Apt Elev <b>4</b>
--	------------------------	---

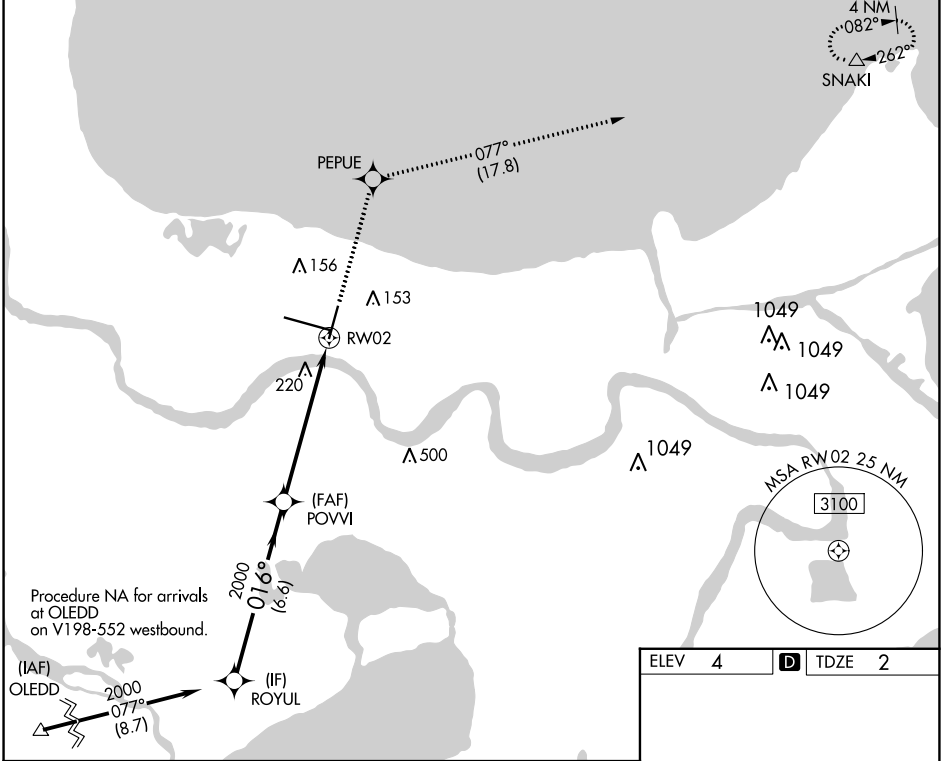
# RNAV (GPS) RWY 2

LOUIS ARMSTRONG NEW ORLEANS INTL (MSY)

RNP APCH - GPS. MISSED APPROACH: Climb to 3000 direct PEPUE and on track 077° to SNAKI and hold.

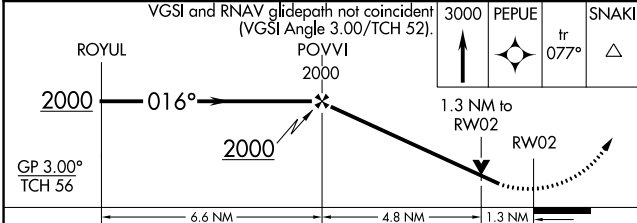
▼ Rwy 2 helicopter visibility reduction below RVR 4000 NA. For uncompensated Baro-VNAV systems, LNAV/VNAV NA below 0°C or above 54°C.

D-ATIS <b>127.55</b>	NEW ORLEANS APP CON WEST <b>125.5 350.35</b> EAST <b>133.15 290.3</b>	NEW ORLEANS TOWER <b>119.5 254.3</b>	GND CON <b>121.9 273.525</b>	CLNC DEL <b>120.925</b>	CPDLC
-------------------------	---	---	---------------------------------	----------------------------	-------



SC-4, 03 OCT 2024 to 31 OCT 2024

SC-4, 03 OCT 2024 to 31 OCT 2024



ELEV <b>4</b>	<b>D</b> TDZE <b>2</b>
---------------	------------------------

CATEGORY	A	B	C	D
LPV DA		398/60	396 (400-1¼)	
LNAV/VNAV DA		379/55	377 (400-1)	
LNAV MDA	480/55	478 (500-1)	480-1⅜ 478 (500-1⅝)	
<b>C</b> CIRCLING	520-1	516 (600-1)	580-1½ 576 (600-½)	580-2 576 (600-2)

