

LOC I-IAG <b>110.1</b>	APP CRS <b>280°</b>	Rwy ldg TDZE Apt Elev	<b>9129</b> <b>588</b> <b>592</b>
---------------------------	------------------------	-----------------------------	---

# ILS Z or LOC Z RWY 28R

NIAGARA FALLS INTL (IAG)

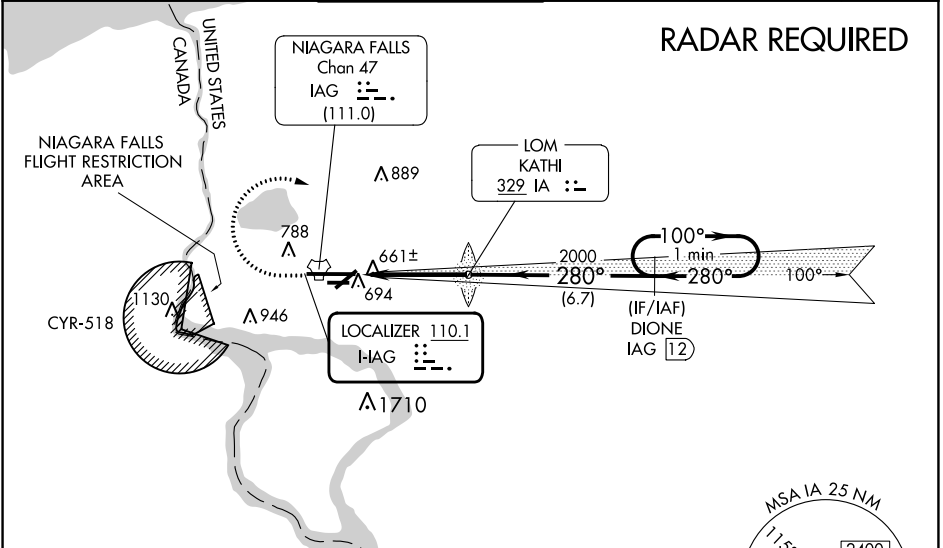
**⚠** When local altimeter setting not received, use Buffalo Niagara Intl altimeter setting and increase all DA 51 feet and all MDA 60 feet; increase Circling Cat C and D visibility ¼ SM. For inop MALS, increase S-ILS 28R all Cats visibility to RVR 4500 and S-LOC 28R all Cats visibility to RVR 5000. For inop MALS when using Buffalo Niagara Intl altimeter setting, increase S-ILS 28R all Cats visibility to RVR 4500, S-LOC 28R Cats A/B visibility to RVR 5000, and S-LOC 28R Cats C/D visibility to RVR 6000. DME required. Rwy 28R helicopter visibility reduction below ¾ SM NA. Rwy 6, 10R, 24, 28L, helicopter visibility reduction below 1 SM NA. Circling Rwy 6, 10R, 24, 28L NA at night.

MALS



MISSED APPROACH: Climb to 1200 then climbing right turn to 3200 on heading 120° and I-IAG E course to DIONE/IAG 12 DME and hold.

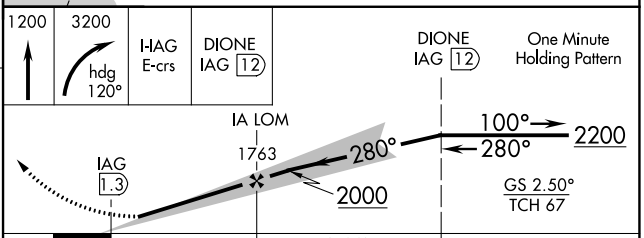
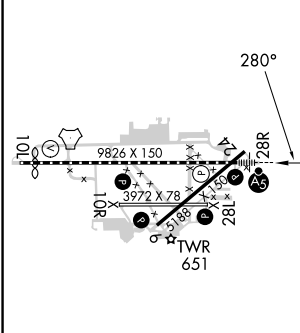
ATIS <b>120.8 269.4</b>	BUFFALO APP CON <b>126.5 317.6</b>	NIAGARA TOWER* <b>118.5 (CTAF) 0 349.0</b>	GND CON <b>125.3 275.8</b>	CLNC DEL <b>119.25 251.1</b>	UNICOM <b>122.95</b>
----------------------------	---------------------------------------	---	-------------------------------	---------------------------------	-------------------------



NE-2, 03 OCT 2024 to 31 OCT 2024

NE-2, 03 OCT 2024 to 31 OCT 2024

ELEV 592	<b>D</b>	TDZE 588
----------	----------	----------



CATEGORY	A	B	C	D
S-ILS 28R	838/40 250 (300-¾)			
S-LOC 28R	920/40 332 (400-¾)			
<b>C</b> CIRCLING	1100-1	508 (600-1)	1280-2 688 (700-2)	1280-2¼ 688 (700-2¼)

TDZ/CL Rwy 28R **Ⓛ**  
 REIL Rwys 6, 10R, 24, and 28L **Ⓛ**  
 HIRL Rwy 10L-28R **Ⓛ**  
 MIRL Rwys 6-24 and 10R-28L **Ⓛ**