


WAAS CH <b>99432</b> <b>W28B</b>	APP CRS <b>280°</b>	Rwy ldg TDZE <b>588</b> Apt Elev <b>592</b>	<b>9129</b>
--	------------------------	---	-------------

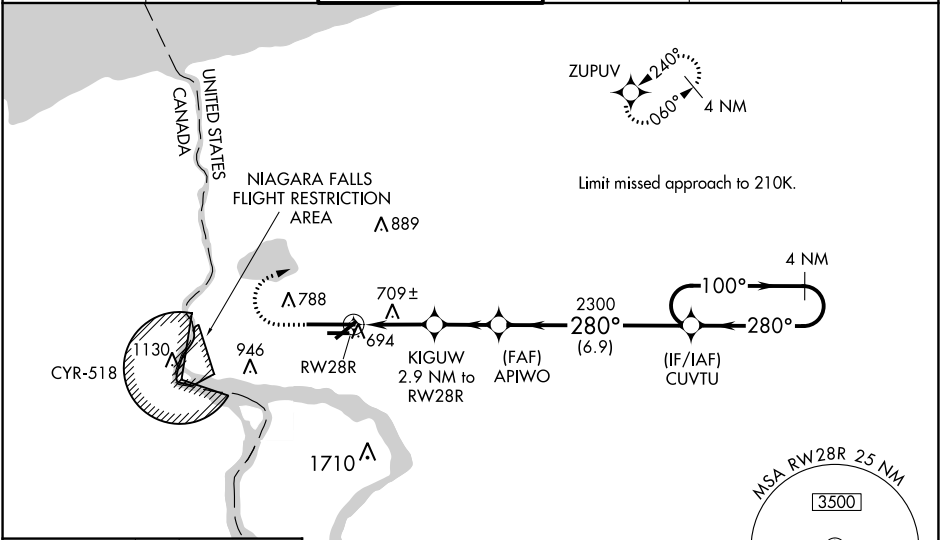
# RNAV (GPS) RWY 28R

NIAGARA FALLS INTL (IAG)

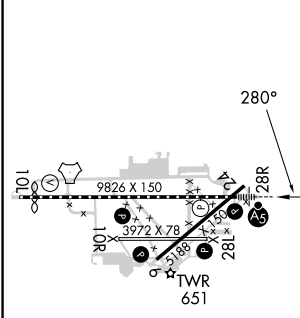
**⚠** For uncompensated Baro-VNAV systems, LNAV/VNAV NA below -18°C (0°F) or above 54°C (130°F). DME/DME RNP-0.3 NA. When local altimeter setting not received, use Buffalo Niagara Intl altimeter setting and increase all DA 51 feet and all MDA 60 feet; increase LNAV/VNAV all Cats visibility 1/8 SM and Circling Cat C and D 1/4 SM. Baro-VNAV and VDP NA with Buffalo Niagara Intl altimeter setting. For inop MALSAR increase LNAV/VNAV visibility all Cats to RVR 6000 and LNAV all Cats visibility to RVR 5500. For inop MALSAR when using Buffalo Niagara Intl altimeter setting, increase LPV all Cats and LNAV Cats C/D visibility to RVR 5500 and LNAV/VNAV all Cats visibility to RVR 6000. Rwy 28R helicopter visibility reduction below 3/4 SM NA. Rwy 6, 10R, 24, 28L, 28R, helicopter visibility reduction below 1 SM NA. Circling Rwy 6, 10R, 24, 28L, NA at night.

**MALSAR**  
  
**MISSED APPROACH:**  
 Climb to 1040 then climbing right turn to 3600 direct ZUPUV and hold, continue climb-in-hold to 3600.

ATIS <b>120.8 269.4</b>	BUFFALO APP CON <b>126.5 317.6</b>	<b>NIAGARA TOWER*</b> <b>118.5 (CTAF) 0 349.0</b>	GND CON <b>125.3 275.8</b>	CLNC DEL <b>119.25 251.1</b>	UNICOM <b>122.95</b>
----------------------------	---------------------------------------	--	-------------------------------	---------------------------------	-------------------------



ELEV <b>592</b>	<b>D</b>	TDZE <b>588</b>
-----------------	----------	-----------------



TDZ/CL RWY 28R <b>Ⓛ</b> REIL Rws 6, 10R, 24, and 28L <b>Ⓛ</b> HIRL RWY 10L-28R <b>Ⓛ</b> MIRL Rws 6-24 and 10R-28L <b>Ⓛ</b>	<b>RADAR REQUIRED</b>			
*LNAV only. 1040 3600 ZUPUV VGSi and RNAV glidepath not coincident (VGSi Angle 2.50/TCH 67). 4 NM Holding Pattern 3100 GP 3.00° TCH 55	APIWO KIGUW 2.9 NM to RWY 28R 2300 280° 1560* 2300 280° 100° 280°			
CATEGORY LPV DA LNAV/VNAV DA LNAV MDA <b>C</b> CIRCLING	A	B	C	D
		838/40	250 (300-3/4)	
		957/40	369 (400-3/4)	
		960/40	372 (400-3/4)	
	1100-1	508 (600-1)	1280-2 688 (700-2)	1280-2 1/4 688 (700-2 1/4)

NE-2, 03 OCT 2024 to 31 OCT 2024

NE-2, 03 OCT 2024 to 31 OCT 2024