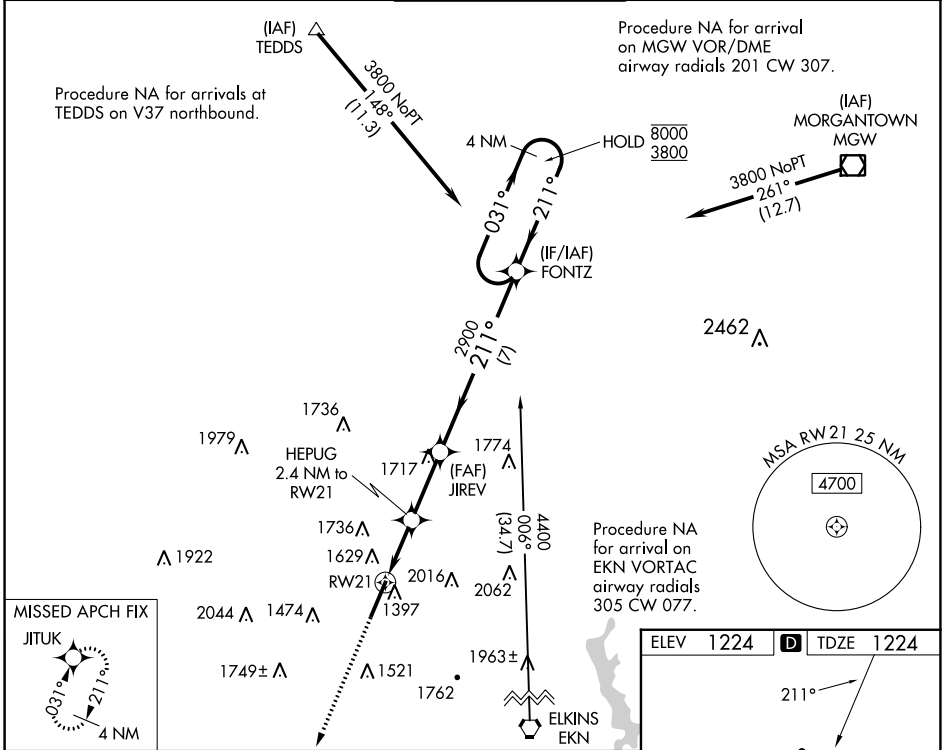


WAAS CH <b>82504</b> <b>W21A</b>	APP CRS <b>211°</b>	Rwy Idg TDZE Apt Elev	<b>7130</b> <b>1224</b> <b>1224</b>
--	------------------------	-----------------------------	---

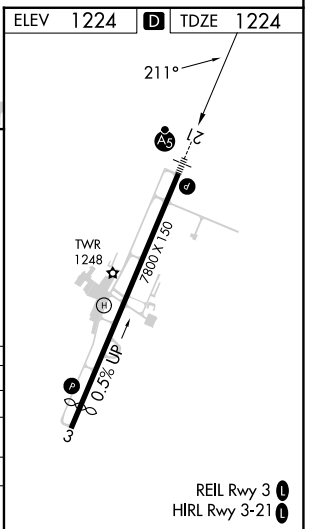
# RNAV (GPS) RWY 21

NORTH CENTRAL WEST VIRGINIA (CKB)

RNP APCH.		MALSR		MISSED APPROACH: Climb to 3900 direct JITUK and hold.	
<p>▼ For uncompensated Baro-VNAV systems, LNAV/VNAV NA below -16°C or above 54°C. For inop ALS, increase LNAV Cats C and D visibility to 1½ SM.</p>					
ATIS <b>127.825</b>	CLARKSBURG APP CON ★ <b>121.15 284.65</b>	CLARKSBURG TOWER ★ <b>126.7 (CTAF) 257.925</b>	GND CON <b>121.9</b>	UNICOM <b>123.0</b>	



<p>3900 ↑</p>		<p>HEPUG 2.4 NM to RW21</p>		<p>JIREV 2900</p>		<p>FONZ 4 NM Holding Pattern</p>		<p>GP 3.00° TCH 60</p>	
<p>*LNAV only.</p>		<p>*1.6 NM to RW21</p>		<p>*2020</p>		<p>2900</p>		<p>8000 3800</p>	
<p>1.6 NM</p>		<p>0.8 NM</p>		<p>2.7 NM</p>		<p>7 NM</p>		<p>0.5% UP</p>	
CATEGORY		A	B	C	D				
LPV DA		1424/24		200 (200-½)					
LNAV/VNAV DA		1786-1¾		562 (600-1¾)					
LNAV MDA		1800/24		576 (600-½)		1800-1¼		576 (600-1¼)	
CIRCLING		1940-1 716 (800-1)		2040-1¼ 816 (900-1¼)		2320-3		1096 (1100-3)	



NE-4, 03 OCT 2024 to 31 OCT 2024

NE-4, 03 OCT 2024 to 31 OCT 2024