

WAAS CH <b>65914</b> <b>W36A</b>	APP CRS <b>005°</b>	Rwy Idg <b>7652</b> TDZE <b>782</b> Apt Elev <b>782</b>
----------------------------------------	------------------------	---------------------------------------------------------------

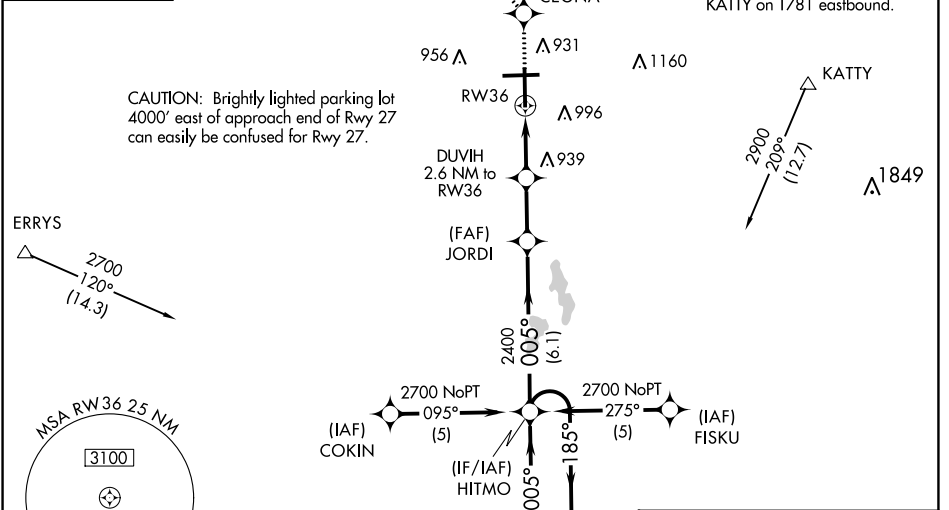
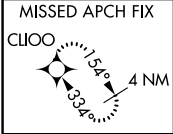
# RNAV (GPS) RWY 36

BISHOP INTL (F'NT)

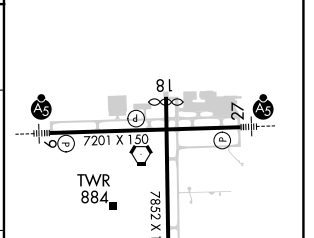
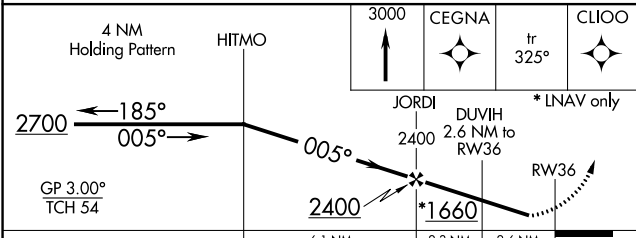
**⚠** For uncompensated Baro-VNAV systems, LNAV/VNAV NA below -16°C (4°F) or above 54°C (130°F). Rwy 36 helicopter visibility reduction below ¾ SM NA. DME/DME RNP -0.3 NA.

**⚠** MISSED APPROACH: Climb to 3000 direct CEGNA and on track 325° to CLIOO and hold.

ATIS <b>133.15</b>	GREAT LAKES APP CON * <b>118.8 257.9</b>	FLINT TOWER * <b>126.3 (CTAF) 257.9</b>	GND CON <b>121.9</b>	CLNC DEL <b>121.75</b>	UNICOM <b>122.95</b>
-----------------------	---------------------------------------------	--------------------------------------------	-------------------------	---------------------------	-------------------------



ELEV 782	<b>D</b>	TDZE 782
HIRL Rwy 9-27 and 18-36 <b>Ⓛ</b>		
REIL Rwy 18 and 36 <b>Ⓛ</b>		



CATEGORY	A	B	C	D
LPV DA	1123-1¼ 341 (400-1¼)			
LNAV/VNAV DA	1254-1¾ 472 (500-1¾)			
LNAV MDA	1260-1	478 (500-1)	1260-1¾ 478 (500-1¾)	1260-1½ 478 (500-1½)
<b>C</b> CIRCLING	1260-1 478 (500-1)	1300-1 518 (600-1)	1300-1½ 518 (600-1½)	1520-2¼ 738 (800-2¼)

EC-1, 03 OCT 2024 to 31 OCT 2024

EC-1, 03 OCT 2024 to 31 OCT 2024