

WAAS CH 45714 W09A	APP CRS 094°	Rwy Idg 7201 TDZE 771 Apt Elev 782
--------------------------	-----------------	---------------------------------------------------

RNAV (GPS) RWY 9

BISHOP INTL (F'NT)

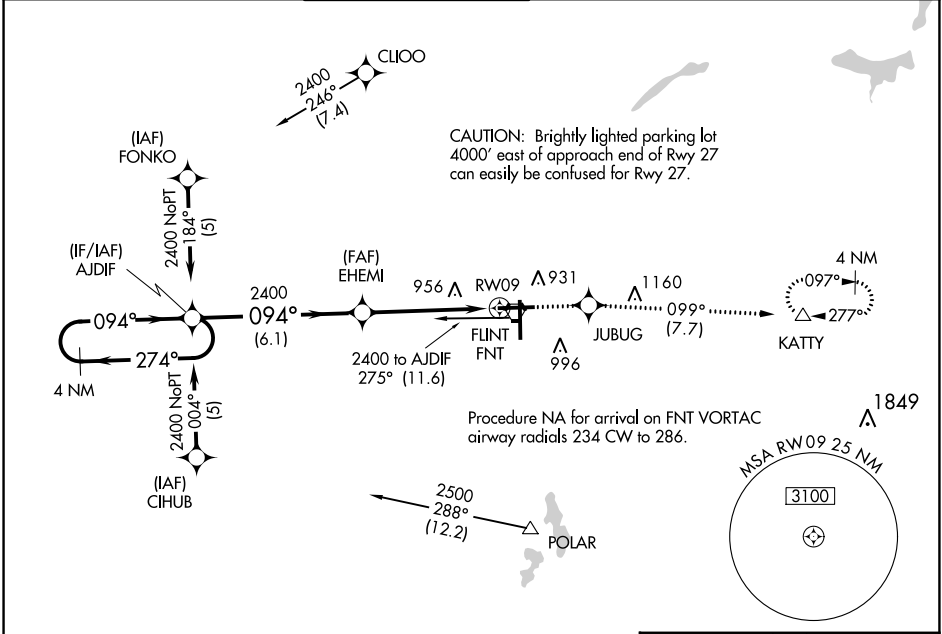
T
A

For uncompensated Baro-VNAV systems, LNAV/VNAV NA below -16°C (4°F) or above 54°C (130°F). DME/DME RNP-0.3 NA. For inop ALS, increase LNAV Cat C/D visibility to 1 $\frac{1}{8}$ SM.
**RVR 1800 authorized with use of FD or AP or HUD to DA.

MALSR
AS

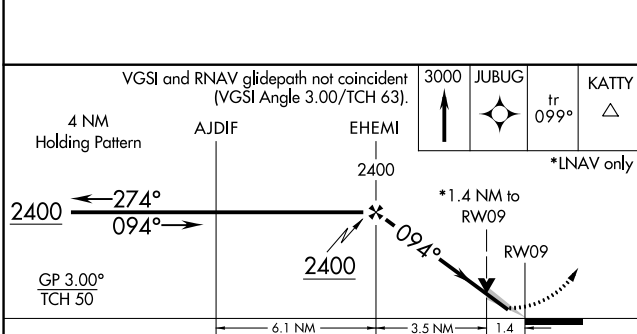
MISSED APPROACH: Climb to 3000 direct JUBUG and on track 099° to KATY and hold.

ATIS 133.15	GREAT LAKES APP CON * 118.8 257.9	FLINT TOWER * 126.3 (CTAF) 257.9	GND CON 121.9	CLNC DEL 121.75	UNICOM 122.95
----------------	--------------------------------------	-------------------------------------	------------------	--------------------	------------------

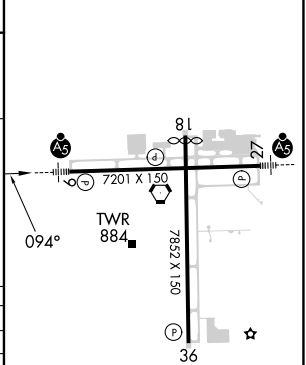


EC-1, 03 OCT 2024 to 31 OCT 2024

EC-1, 03 OCT 2024 to 31 OCT 2024



ELEV 782	D	TDZE 771
----------	---	----------



CATEGORY	A	B	C	D
LPV DA **	971/24		200 (200- $\frac{1}{2}$)	
LNAV/DA VNAV	1227/50		456 (500-1)	
LNAV MDA	1260/24 489 (500- $\frac{1}{2}$)		1260/50 489 (500-1)	
CIRCLING	1260-1 478 (500-1)	1300-1 518 (600-1)	1300-1 $\frac{1}{2}$ 518 (600- $\frac{1}{2}$)	1520-2 $\frac{1}{4}$ 738 (800-2 $\frac{1}{4}$)

HIRL Rwy 9-27 and 18-36
REIL Rwy 18 and 36