

FLINT, MICHIGAN

AL-618 (FAA)

23222

VORTAC FNT <b>116.9</b> Chan <b>116</b>	APP CRS <b>359°</b>	Rwy Idg <b>7652</b> TDZE <b>782</b> Apt Elev <b>782</b>
---	------------------------	---

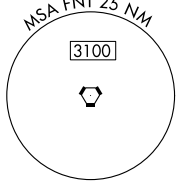
# VOR RWY 36

BISHOP INTL (F'NT)

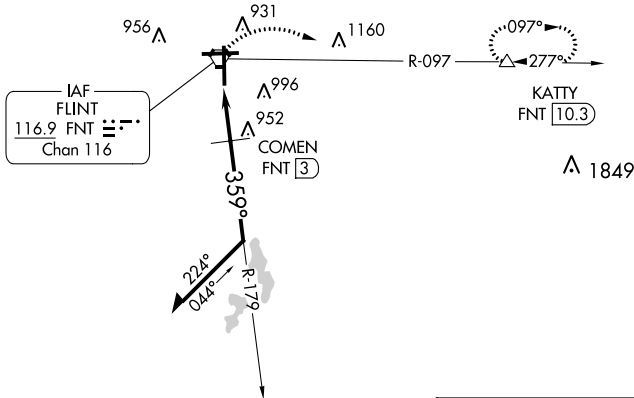
**⚠** Rwy 36 helicopter visibility reduction below 3/4 SM NA.  
DME required.

MISSED APPROACH: Climbing right turn to 3000  
on FNT VORTAC R-097 to KATTY/10.3 DME and hold.

ATIS <b>133.15</b>	GREAT LAKES APP CON * <b>118.8 257.9</b>	FLINT TOWER * <b>126.3 (CTAF) 257.9</b>	GND CON <b>121.9</b>	CLNC DEL <b>121.75</b>	UNICOM <b>122.95</b>
-----------------------	---	--	-------------------------	---------------------------	-------------------------



CAUTION: Brightly lighted parking lot  
4000' east of approach end Rwy 27  
can easily be confused for Rwy 27.

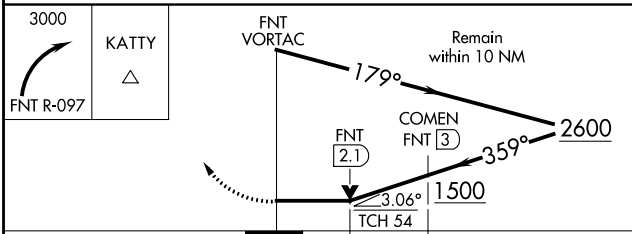
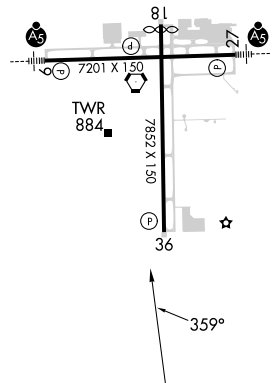


EC-1, 03 OCT 2024 to 31 OCT 2024

EC-1, 03 OCT 2024 to 31 OCT 2024

ELEV 782	<b>D</b>	TDZE 782
----------	----------	----------

HIRL Rwys 9-27 and 18-36  
REIL Rwy 18 and 36



CATEGORY	A	B	C	D
S-36	1220-1	438 (500-1)	1220-1 1/4	438 (500-1 1/4)
<b>C</b> CIRCLING	1240-1 458 (500-1)	1300-1 518 (600-1)	1300-1 1/2 518 (600-1 1/2)	1520-2 1/4 738 (800-2 1/4)

FLINT, MICHIGAN  
Orig-A 24MAY18

42°58'N-83°45'W

# BISHOP INTL (F'NT)

## VOR RWY 36