

VORTAC SWL <b>112.4</b> Chan 71	APP CRS <b>190°</b>	Rwy Idg <b>4808</b> TDZE <b>39</b> Apt Elev <b>40</b>
---------------------------------------	------------------------	---

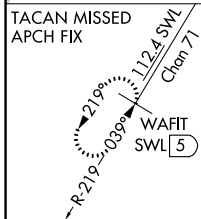
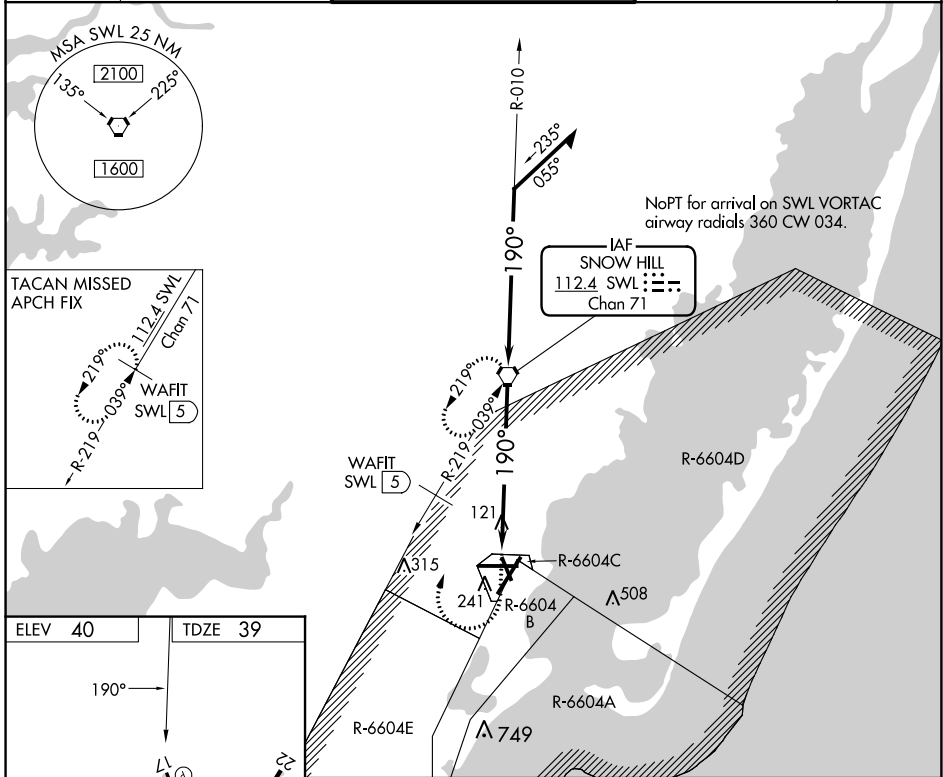
# VOR or TACAN RWY 17

WALLOPS FLIGHT FACILITY (WAL)

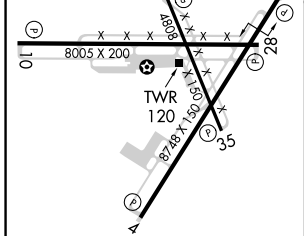
**⚠** When local altimeter setting not received, use Salisbury altimeter setting and increase all MDA 60 feet and S-17 Cats C/D and Circling Cat C visibility ¼ mile. Helicopter visibility reduction below ¾ SM NA.

**MISSED APPROACH:** Climb to 600 then climbing right turn to 2000 direct SWL VORTAC and hold. (TACAN aircraft climb to 600 then climbing right turn to 2000 on heading 300° and SWL VORTAC R-219 to WAFIT/SWL 5 DME and hold SW, LT 039° inbound.)

ASOS <b>119.175</b>	PATUXENT APP CON ★ <b>127.95 314.0</b>	WALLOPS TOWER ★ <b>126.5 (CTAF) 0 306.975 (CTAF) 0</b>	GND CON <b>127.875 269.325</b>	CLNC DEL <b>121.7</b>
------------------------	---	---	-----------------------------------	--------------------------



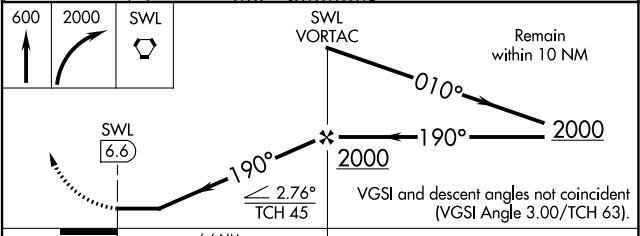
ELEV 40	TDZE 39
190° →	



REIL all Rwys  
HIRL Rwys 4-22, 10-28 and 17-35

FAF to MAP 6.6 NM

Knots	60	90	120	150	180
Min:Sec	6:36	4:24	3:18	2:38	2:12



CATEGORY	A	B	C	D
S-17	540-1 501 (500-1)		540-1⅜ 501 (500-1⅜)	
<b>C</b> CIRCLING	600-1 560 (600-1)		620-1½ 580 (600-1½)	860-2¾ 820 (900-2¾)

NE-3, 03 OCT 2024 to 31 OCT 2024

NE-3, 03 OCT 2024 to 31 OCT 2024