

VOR/DME JPU <b>114.45</b> Chan <b>91 (Y)</b>	APP CRS <b>211°</b>	Rwy Idg <b>6780</b> TDZE <b>857</b> Apt Elev <b>859</b>
--	------------------------	---

# VOR RWY 21

MID-OHIO VALLEY RGNL (PKB)

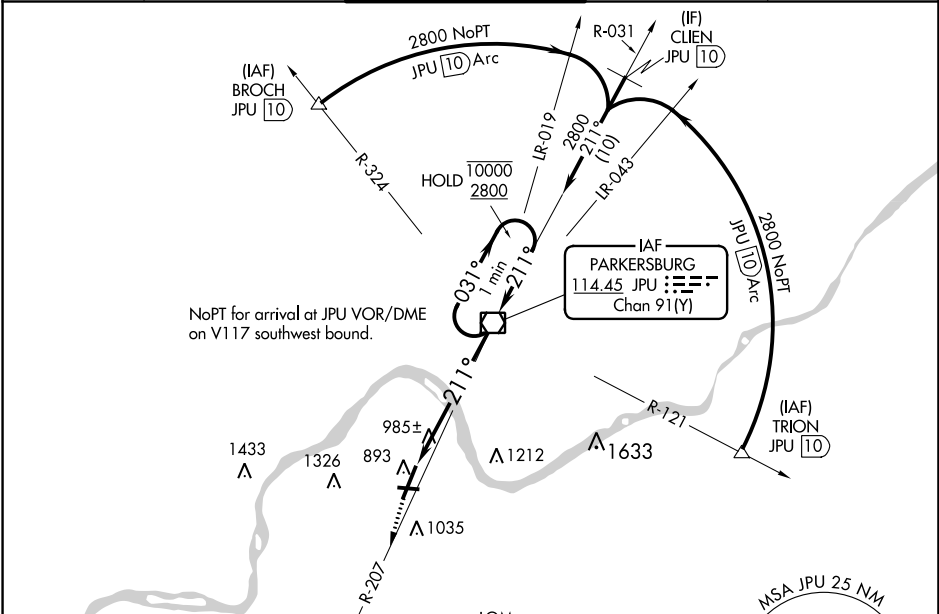
ADF or DME required.

**▼** Circling Rwy 10, 28 NA at night. Rwy 21 helicopter visibility reduction below 3/4 SM NA. VDP NA when using Athens/Albany altimeter setting. When local altimeter setting not received, use Athens/Albany altimeter setting and increase all MDA 100 feet, increase S-21 and Circling Cats C/D visibility 1/2 SM.

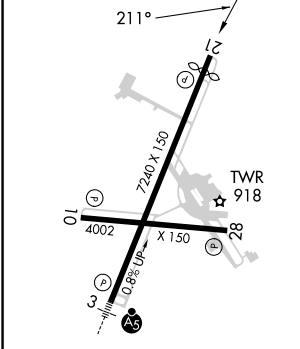
**▲** NA

MISSED APPROACH: Climb to 2600 on JPU VOR/DME R-207 to VERSI LOM/JPU 12.3 DME and hold.

ATIS <b>124.35</b>	INDIANAPOLIS CENTER <b>125.55 317.475</b>	PARKERSBURG TOWER* <b>123.7 (CTAF) 257.8</b>	GND CON <b>126.45</b>	UNICOM <b>122.95</b>
-----------------------	--	---	--------------------------	-------------------------



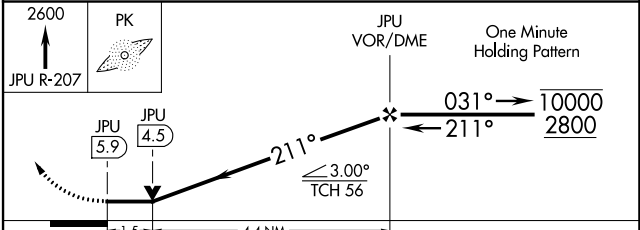
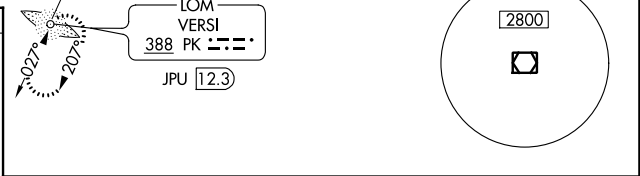
ELEV <b>859</b>	<b>D</b>	TDZE <b>857</b>
-----------------	----------	-----------------



REIL Rwy 28  
HIRL Rwys 3-21 and 10-28  
REIL Rwy 10, 21

FAF to MAP 5.9 NM

Knots	60	90	120	150	180
Min:Sec	5:54	3:56	2:57	2:22	1:58



CATEGORY	A	B	C	D
S-21	1380-1 523 (600-1)		1380-1 1/2 523 (600-1 1/2)	1380-1 3/4 523 (600-1 3/4)
CIRCLING	1380-1 521 (600-1)		1640-2 1/4 781 (800-2 1/4)	1640-2 1/2 781 (800-2 1/2)

NE-4, 03 OCT 2024 to 31 OCT 2024

NE-4, 03 OCT 2024 to 31 OCT 2024