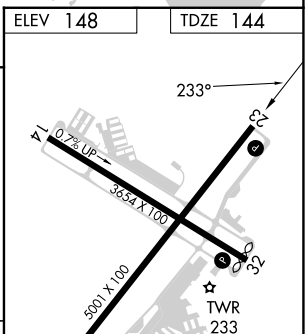
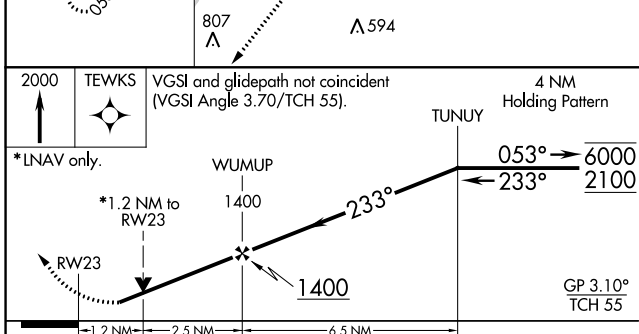
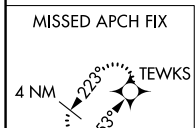
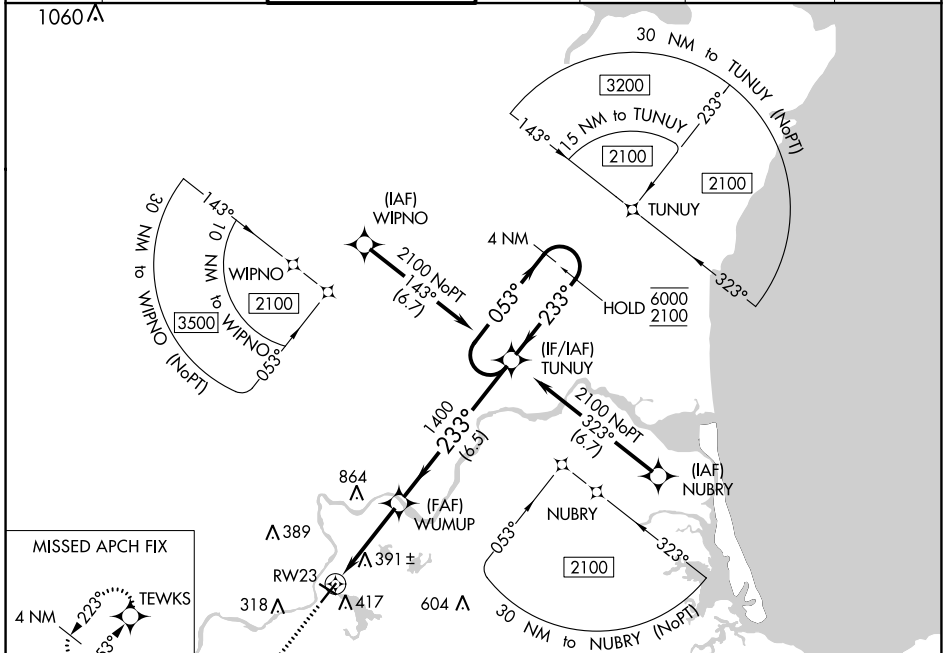


WAAS CH 61022 W23A	APP CRS 233°	Rwy Idg TDZE 144 Apt Elev 148	5001
--	------------------------	--	-------------

RNAV (GPS) RWY 23

LAWRENCE MUNI (LWM)

RNP APCH. ⚠ Circling Rwy 32 NA at night. Rwy 23 helicopter visibility reduction below 3/4 SM NA. ⚠ For uncompensated Baro-VNAV systems, LNAV/VNAV NA below -20°C or above 54°C.				MISSED APPROACH: Climb to 2000 direct TEWKS and hold.		
ATIS 126.75	BOSTON APP CON 124.4 279.6	LAWRENCE TOWER * 119.25 (CTAF) 1	GND CON 124.3	CLNC DEL 124.3	CLNC DEL 126.15 (When twr closed)	UNICOM 122.8



CATEGORY	A	B	C	D
LPV DA		562-1 1/8	418 (500-1 1/8)	
LNAV/VNAV DA		717-1 1/8	573 (600-1 1/8)	
LNAV MDA	660-1	516 (600-1)	660-1 3/8	516 (600-1 3/8)
C CIRCLING	740-1	592 (600-1)	840-2 692 (700-2)	1220-3 1072 (1100-3)

REIL Rwy 5, 23 and 32 **1**
 HIRL Rwy 5-23 **1**
 MIRL Rwy 14-32 **1**

NE-1, 03 OCT 2024 to 31 OCT 2024

NE-1, 03 OCT 2024 to 31 OCT 2024