

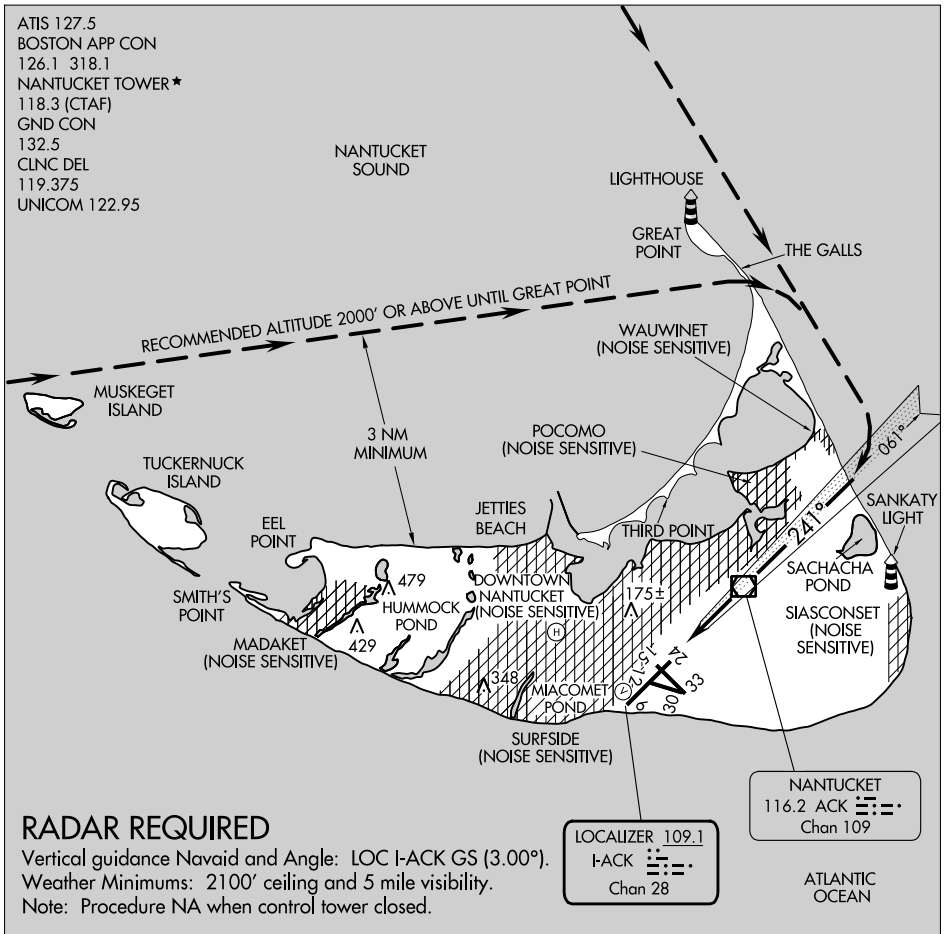
24249

GREAT POINT VISUAL RWY 24

AL-659 (FAA)

NANTUCKET MEML (ACK)
NANTUCKET, MASSACHUSETTS

ATIS 127.5
 BOSTON APP CON
 126.1 318.1
 NANTUCKET TOWER ★
 118.3 (CTAF)
 GND CON
 132.5
 CLNC DEL
 119.375
 UNICOM 122.95



NE-1, 03 OCT 2024 to 31 OCT 2024

NE-1, 03 OCT 2024 to 31 OCT 2024

RADAR REQUIRED

Vertical guidance Navaid and Angle: LOC I-ACK GS (3.00°).
 Weather Minimums: 2100' ceiling and 5 mile visibility.
 Note: Procedure NA when control tower closed.

LOCALIZER 109.1
 I-ACK
 Chan 28

NANTUCKET
 116.2 ACK
 Chan 109

ATLANTIC OCEAN

| | | | | | | | | | | | | | | |
|------|---|---|---|---|---|---|---|---|----|----|----|----|----|----|
| 1 NM | 2 | 3 | 4 | 5 | 6 | 7 | 8 | 9 | 10 | 11 | 12 | 13 | 14 | 15 |
| | | | | | | | | | | | | | | |

GREAT POINT VISUAL RWY 24

41°15'N-70°04'W

NANTUCKET, MASSACHUSETTS
NANTUCKET MEML (ACK)

Amdt 1 10NOV16