


LOC/DME I-ACK <b>109.1</b> Chan <b>28</b>	APP CRS <b>241°</b>	Rwy Idg TDZE Apt Elev <b>6303</b> <b>47</b> <b>47</b>
---	------------------------	--

# ILS or LOC RWY 24

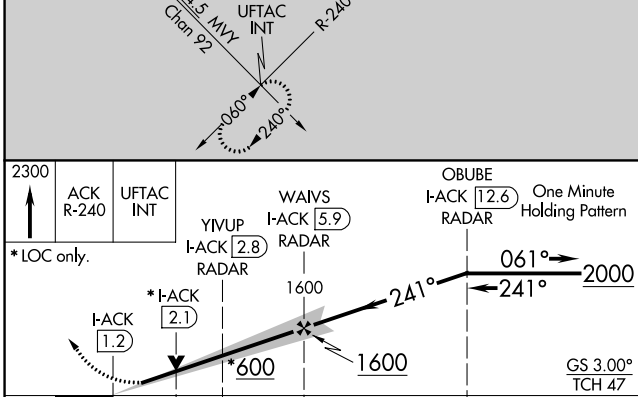
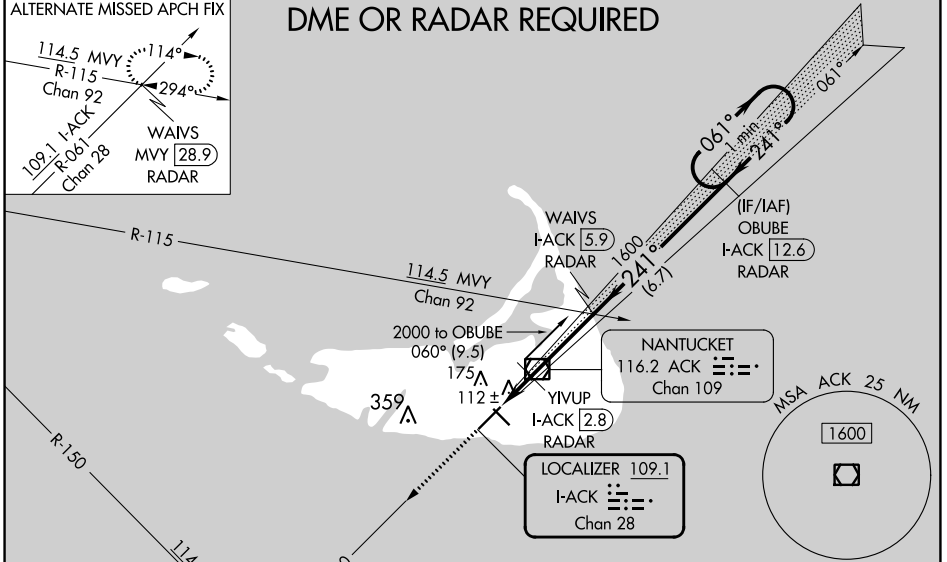
NANTUCKET MEML (ACK)

When local altimeter setting not received, use Hyannis altimeter setting and increase DA to 310 and all MDA 80 feet. Increase S-ILS 24, all Cats, visibility to RVR 2000, S-LOC 24 Cats C/D visibility to RVR 4000 and increase Circling Cats C/D ¼ SM. VDP NA when using Hyannis altimeter setting. For inop SSALR when using the Hyannis altimeter setting, increase S-ILS 24, all Cats, visibility to RVR 4500 and increase S-LOC 24 Cats C/D visibility to RVR 6000.

**SSALR** 

**MISSED APPROACH:**  
Climb to 2300 on ACK VOR/DME R-240 to UFTAC INT and hold.

ATIS <b>127.5</b>	BOSTON APP CON <b>126.1 318.1</b>	<b>NANTUCKET TOWER *</b> <b>118.3 (CTAF) 0</b>	GND CON <b>132.5</b>	CLNC DEL <b>119,375</b>	UNICOM <b>122.95</b>
----------------------	--------------------------------------	---	-------------------------	----------------------------	-------------------------



ELEV 47	<b>D</b>	TDZE 47
---------	----------	---------

241°  
TWR 107  
0.2% UP  
6303 1150  
4500 100  
303

TDZ/CL Rwy 24  
HIRL Rwy 6-24  
MIRL Rwy 15-33  
REIL Rwys 15 and 33

FAF to MAP 4.7 NM

Knots	60	90	120	150	180
Min:Sec	4:42	3:08	2:21	1:53	1:34

CATEGORY	A	B	C	D
S-ILS 24	247/18 200 (200-½)			
S-LOC 24	380/24	333 (400-½)	380/26	333 (400-½)
CIRCLING	480-1 433 (500-1)	500-1 453 (500-1)	720-2 673 (700-2)	720-2¼ 673 (700-2¼)

NE-1, 03 OCT 2024 to 31 OCT 2024

NE-1, 03 OCT 2024 to 31 OCT 2024