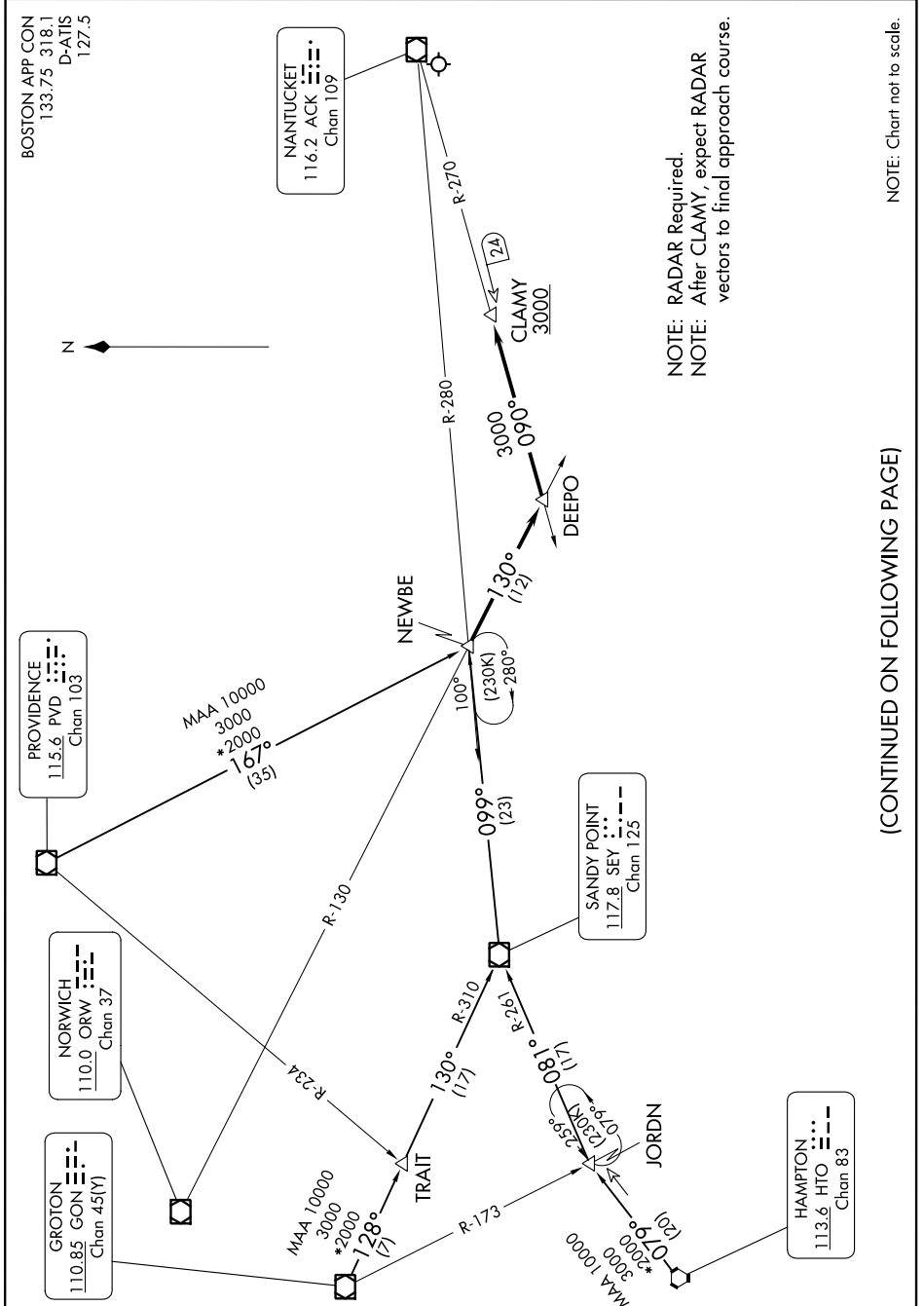


NEWBE THREE ARRIVAL

AL-659 (FAA)

NANTUCKET MEML (ACK)
NANTUCKET, MASSACHUSETTS

NE-1, 03 OCT 2024 to 31 OCT 2024



(CONTINUED ON FOLLOWING PAGE)

NOTE: Chart not to scale.

NE-1, 03 OCT 2024 to 31 OCT 2024

NEWBE THREE ARRIVAL

NANTUCKET, MASSACHUSETTS
NANTUCKET MEML (ACK)